

CERTIFIED CORNER RECORDATION

Corner Cor 2 of HES 1260 T. 35N R. 25W P.M.M. Lincoln County

1942 HES Original Record by A.O. Modlin:

Set a limestone 5x4x2 ins., marked with a cross (X) under an iron post, 3 ft. long, 2 ins. in diam., 26 ins. in the ground, with at Brass Cap mkd:

A Spruce, 8 ins. in diam., bears N44°40' E, 32 lks. dist. mkd with a cross (X) & 2 HES 1260 BT;

A Spruce, 8 ins. in diam., bears N27°00'E, 26 lks. dist. mkd with a cross (X) & 2 HES 1260 BT;

Raise a mound of earth 4 ft. base, 2 ft. high, NE of corner.

1992 Resurvey by Alvah F. Hughes:

The corner stone is obliterated as its position lies in a cultivated field. At a position determined by survey, I excavate 26 ins. in the ground and find the original memorial stone, 6x7x2 ins. with an X on the top. No bearing trees found.

Set:

An Alum. Pipe, 24 ins. long, 2½" long, 14 ins. below the ground surface, with

A ¾ ins. Alum Cap marked as shown. Placed a piece of rebar inside monument for location purposes only.

A Fir, 9 ins. in diam., bears N9°E, 44.5 ft. dist., scribed 2 HES 1260 BT.

A Cedar, 12 ins. in diam. bears N27°W, 58.9 ft. dist., scribed 2 HES 1260 BT.

A galvanized steel guard post, 6 ft. long with LSM decal attached, bears N19°W, 40.8 ft. dist.

2. Found:

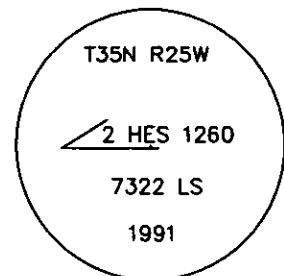
A USDA Aluminum monument, ¾ ins. in diam., 14 ins. below surface of cultivated field, mkd. as shown;

A Douglas Fir, 12 ins. in diam., bears N9°E, 44.50 ft. dist., partially healed face, illegible scribing visible;

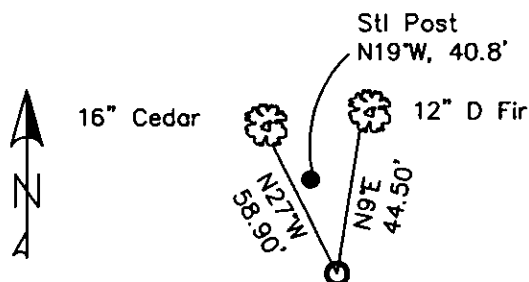
A Cedar, 16 ins. in diam., bears N27°W, 58.90 ft. dist., partial open face, HES 1260 BT visible;

A Steel post, bears N19°W, 40.80 ft. dist. with LSM tag.

3. Reburied monument and repainted blazes and rings on all BTs, New tag on Cedar BT NW of corner.



MAGNETIC DECLINATION - 16° EAST



SKETCH OF CORNER

CERTIFICATION

I, CURT HECKROTH
 certify the information shown herein is true and correct.

I, LAWRENCE A. GLAHE
 certify that this Corner Recordation represents work performed by me or under my direction in compliance with the "Corner Recordation Act" (MCA 92-22-101, et seq. M.C.A.)

Date: 11-10-10 9748 LS
 Surveyor: GLAHE & ASSOC., INC.
 Employer: GLAHE & ASSOC., INC.

Office of Clerk and Recorder, County of Lincoln. This "corner

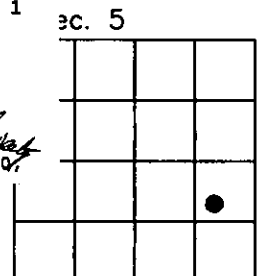
record" was filed for record on 229671 BOOK: CCR CC&R'S PAGE: 11641 Pages: 1

was noted on the cross-index pl. STATE OF MONTANA LINCOLN COUNTY
 RECORDED: 11/16/2010 9:11 KOI: CC&R'S

book No. TAMMY D. LAUER CLERK AND RECORDER
 FEE: \$0.00 BY: Glennie Lauer
 TO: GLAHE & ASSOC., INC. P.O. BOX 1863, SANDPOINT, ID. 83860

2 HES 1260
 Cross Index No. 7021 T. 35N R. 25W PMM

Adopted July 1, 1981, Montana Board of Professional Engineers & Land Surveyors



● corner this sheet

10