

CERTIFIED CORNER RECORDATION

Corner Cor 7 of HES 787 T. 35N R. 25W P.M.M. Lincoln County

1. 1917 HES Original record by R.E. Maurer:

Set:

A small stone, marked with a cross (X) under a sandstone 24x16x6 ins., 14 ins. in the ground, marked 7 H.E.S. 787 on the SW face and a cross on top for the exact corner point.

Set two bearing trees and raise a mound of earth 4 ft. base, 2 ft. high, SW of corner.

1960 BLM Resurvey by D. Cunningham:

Found: A Sandstone, 18x15x6 ins., set and mkd. as above.

A Larch stump, 9 ins. in diam. bears N81°E, 47 lks. dist., visible marks: BT.

A Fir, 20 ins. in diam. bears N4°25'W, 132 lks. dist., markings overgrown;

Set:

An Iron Post, 30 ins. long, 2½ ins. diam., 26 ins. in the ground, in concrete, with Brass Cap mkd. as shown.

A Larch, 9 ins. in diam. bears N54¼°E, 44 lks. dist., mkd. 7 HES 787 BT;

A Fir, 6 ins. in diam. bears S33¼°E, 71 lks. dist., mkd. 7 HES 787 BT.

Bury original stone alongside and raise a mound of stone, 3 ft. base, 2 ft. high, SW of the IP.

1991 Resurvey by Alvah F. Hughes:

Found:

A BLM Brass Cap on 2½ ins. diam. iron pipe, 4 ins. above ground, mkd. as shown.

A Larch stump, bears N89°E, 31.0 ft. dist. "B" visible (original);

A Fir, 24 ins. in diam. bears N4°W, 88.4 ft. dist., healed face. (original)

A Larch, 17 ins. in diam. bears N56°E, 29.3 ft. dist., healed face;

A Fir, 11 ins. in diam. bears S30°E, 46.8 ft. dist., healed face.

Set:

A 6 ft. galvanized steel guard post with LSM & PB decals, West, 3 ft. dist.

2. Found:

A BLM Brass monument, 3¼ ins. in diam., flush with ground, no stones around it, mkd. as shown;

A Rotted remains of stump, bears N89°E, 31.00 ft. dist., no scribing;

A Douglas Fir, 26 ins. in diam., bears N4°W, 88.40 ft. dist., well healed face;

A Western Larch, 18 ins. in diam., bears N56°E, 29.30 ft. dist., well healed face;

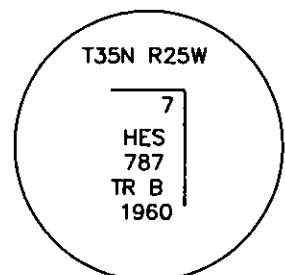
A Douglas Fir, 13 ins. in diam., bears S30°E, 46.80 ft. dist., will healed face;

A Steel post, bears West, 3 ft. dist. with LSM & Boundary tags.

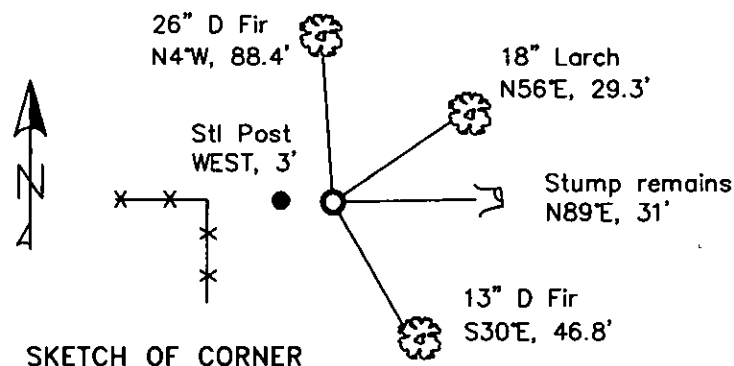
A Fence bears West, 9 ft. dist. from corner.

3. Stacked and painted a mound of stone around monument.

Repainted blazes and rings on all BTs.



MAGNETIC DECLINATION - 16° EAST



SKETCH OF CORNER

CERTIFICATION

I, CURT HECKROTH
certify the information shown herein is true and correct.

Curt Heckroth
Professional Land Surveyor

I, LAWRENCE A. GLAHE
certify that this Corner Record represents work performed by me or under my supervision in compliance with the "Corner Recordation Act" (MCA 72-22-401, et seq. M.C.A.)

Lawrence A. Glahe
Professional Land Surveyor

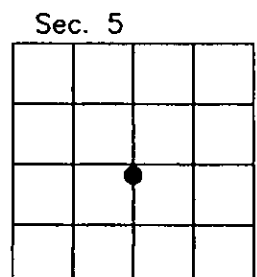
Date: 11/10/10 9748 LS
Employer: GLAHE & ASSOC., INC.

Office of Clerk and Recorder, County of Lincoln, This "corner
229668 BOOK: CCR CC&R'S PAGE: 11638 Pages: 1
record" was filed for record STATE OF MONTANA LINCOLN COUNTY
RECORDED: 11/16/2010 9:08 KOI: CC&R'S
was noted on the cross-in TAMMY D. LAUER CLERK AND RECORDER
book No. FEE: \$0.00 BY: *Tammy D. Lauer*
TO: GLAHE & ASSOC., INC P.O. BOX 1863, SANDPOINT, ID. 83860.

7 HES 787

Cross Index No. 5011 T. 35N R. 25W PMM

Adopted July 1, 1981, Montana Board of Professional Engineers & Land Surveyors



● corner this sheet

1. The first part of the report is a general
description of the project and its objectives.

2. The second part of the report is a detailed
description of the methodology used in the study.

3. The third part of the report is a detailed
description of the results of the study.

4. The fourth part of the report is a detailed
description of the conclusions of the study.

5. The fifth part of the report is a detailed
description of the recommendations of the study.

6. The sixth part of the report is a detailed
description of the limitations of the study.

7. The seventh part of the report is a detailed
description of the future research.

8. The eighth part of the report is a detailed
description of the references.