

# CERTIFIED CORNER RECORDATION

Corner Cor 6 of HES 787 T. 35N R. 25W P.M.M. Lincoln County

## 1. 1917 HES Original record by R.E. Maurer:

Set:

A small stone, marked with a cross (X) under a sandstone 24x8x6 ins., 14 ins. in the ground, marked 6 H.E.S. 787 on the SE face and a cross on top for the exact corner point.

Set two bearing trees and raise a mound of earth 4 ft. base, 2 ft. high, SE of corner.

## 1960 BLM Resurvey by D. Cunningham:

Found: A Sandstone, 20x12x8 ins., set and mkd. as above.

A Fir, 12 ins. in diam., bears S83½°E, 125 lks. dist., markings overgrown;

A Fir, 14 ins. in diam. bears N2½°W, 96 lks. dist., mkd. X 6 HES 787 BT;

Set:

An Iron Post, 30 ins. long, 2½ ins. diam., 26 ins. in the ground, in concrete, with Brass Cap, mkd. as shown;

Bury original stone alongside and rebuild the mound of stone, 3 ft. base, 2 ft. high, SE of the IP.

## 1991 Resurvey by Alvah F. Hughes:

Found:

A BLM Brass Cap on 2½ ins. diam. iron pipe, 4 ins. above ground, mkd. as shown.

A Fir, 17 ins. in diam. bears S82°E, 80.9 ft. (122.6 lks) dist., healed face.

A Fir, 20 ins. in diam. bears N2°W, 63.0 ft. (94.5 lks) dist., HES 787 visible.

Set:

A 6 ft. galvanized steel guard post with LSM & PB decals, East, 4 ft. dist.

## 2. Found:

A BLM Brass monument, 3¼ ins. in diam., 4 ins. out of ground surrounded by a mound of stone, mkd. as shown;

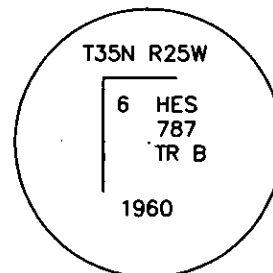
A Douglas Fir, 20 ins. in diam., bears S82°E, 80.90 ft. dist., with a well healed face;

A Douglas Fir, 20 ins. in diam., bears N2°W, 63.00 ft. dist., partial open face, illegible scribing visible;

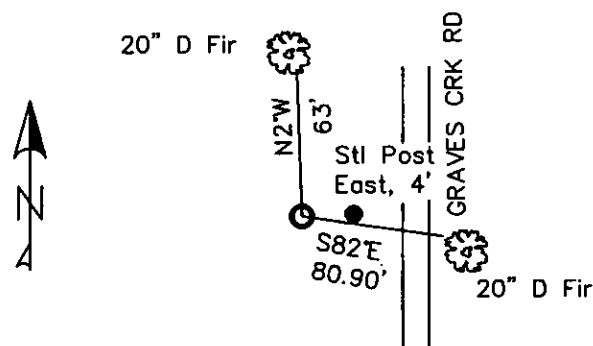
A Steel post, bears East, 4 ft. dist. with LSM & Boundary tags.

## 3. Restacked and painted a mound of stone around monument.

Repainted blazes and rings on all BTs, New tag on BT to SE.



MAGNETIC DECLINATION - 16° EAST



SKETCH OF CORNER

CERTIFICATION

I, CURT HECKROTH  
certify the information shown herein is true and correct.

I, LAWRENCE A. GLAHE  
certify that the Corner Recordation was performed by me or under my direction in compliance with the "Corner Recordation Act" (P.L. 86-224-101, et seq. (R.C.A.))

Date: 11-10-10 9748 LS

Employer: GLAHE & ASSOC., INC.

Office of Clerk and Recorder, County of Lincoln. This "corner record" was filed for record 229667 BOOK: CCR CC&R'S PAGE: 11637 Pages: 1

was noted on the cross-index STATE OF MONTANA LINCOLN COUNTY

book No. TAMMY D. LAUER CLERK AND RECORDER

FEE: \$0.00 BY: Deanne Lauer Deputy

TO: GLAHE & ASSOC., INC. P.O. BOX 1863, SANDPOINT, ID. 83860,

6 HES 787

Cross Index No. 5010 T. 35N R. 25W PMM

Adopted July 1, 1981, Montana Board of Professional Engineers & Land Surveyors

Sec. 5


● corner this sheet

