

# CERTIFIED CORNER RECORDATION

Corner Cor 5 of HES 787 T. 35N R. 25W P.M.M. Lincoln County

## 1. 1917 HES Original record by R.E. Maurer:

Set:

- A small stone, marked with a cross (X) under a sandstone 24x12x6 ins., 14 ins. in the ground, marked 5 H.E.S. 787 on the E face and a cross on top for the exact corner point. From which:
- A Fir, 5 ins. in diam. bears S22°52'E, 38 lks. dist. mkd. with X and scribed 5 HES 787 BT;
- A Fir, 7 ins. in diam. bears N12°35'W, 16 lks. dist. mkd. with X and scribed 5 HES 787 BT;
- A mound of earth 4 ft. base, 2 ft. high, E of corner.

## 1960 BLM Resurvey by D. Cunningham:

Found: A Sandstone, 24x16x6 ins., set and mkd. as above.

A Fir, 8 ins. in diam., bears S22°52'E, 38 lks. dist., mkd. 5 HES BT (Record);

A stump hole bears N12°35'W, 16 lks. dist. with fallen log mkd. X 5 HES 787 BT (Record);

Set:

An Iron Post, 30 ins. long, 2½ ins. diam., 26 ins. in the ground, in concrete, with Brass Cap mkd.

A Fir, 9 ins. in diam. bears N40°E, 43 lks. dist., mkd. 5 HES 787 BT;

A Fir, 11 ins. in diam. bears S38¼°E, 38 lks. dist., mkd. 5 HES 787 BT;

Bury original stone alongside and rebuild the mound of stone, 3 ft. base, 2 ft. high, E of the IP.

## 1991 Resurvey by Alvah F. Hughes:

Found:

A BLM Brass Cap on 2½ ins. diam. iron pipe, 4 ins. above ground with rock mound, 2 ft. dist. East of Corner, mkd as shown.

A Fir, 15 ins. in diam. bears N40°E, 28.1 ft. (42.6 lks) dist., healed face.

A stump, S38°E, 23.5 ft. (35.6 lks) dist., no visible scribing.

Established:

A Fir, 17 ins. in diam. bears S63°E, 13.8 ft. dist. mkd. 5 HES 787 BT;

A 6 ft. galvanized steel guard post with LSM & PB decals, North, 3 ft. dist.

## 2. Found:

A BLM Brass monument, 3¼ ins. in diam., 4 ins. out of ground surrounded by a mound of stone, mkd. as shown;

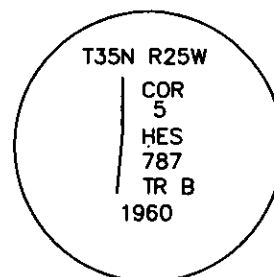
A Douglas Fir, 17 ins. in diam., bears N40°E, 28.10 ft. dist., with a well healed face;

A Douglas Fir, 22 ins. in diam., bears S63°E, 13.80 ft. dist., with a well healed face;

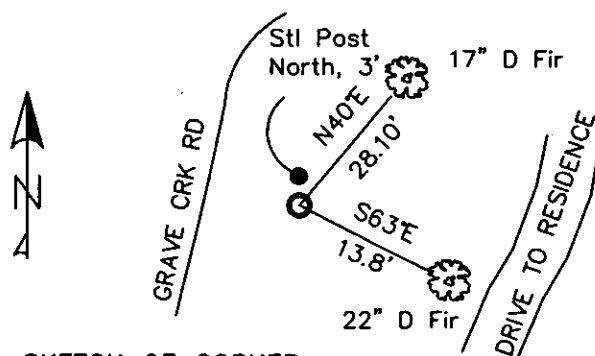
A Steel post, bears North, 3 ft. dist. with Boundary and Location tag.

## 3. Restacked and painted a mound of stone around monument.

Repainted blazes and rings on all BTs.



MAGNETIC DECLINATION - 16° EAST



SKETCH OF CORNER

CERTIFICATION

I, CURT HECKROTH certify the information shown is true and correct.

I, LAWRENCE A. GLAHE certify that the Corner Recordation was performed by me or under my direction in compliance with the "Corner Recordation Act" (MCA 22-4-101, et seq.)

Date: 11-10-10 9748 LS

Employer: GLAHE & ASSOC., INC.

Office of Clerk and Recorder, County of Lincoln This "corner record" was filed for record 229666 BOOK: CCR CC&R'S PAGE: 11636 Pages: 1

was noted on the cross STATE OF MONTANA LINCOLN COUNTY

book No. TAMMY D. LAUER CLERK AND RECORDER

RECORDED: 11/16/2010 9:06 KOI: CC&R'S

FEE: \$0.00

BY: [Signature]

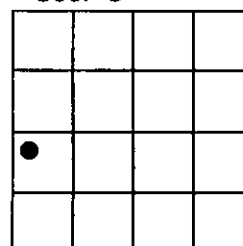
TO: GLAHE & ASSOC., INC. P.O. BOX 1863, SANDPOINT, ID. 83860,

5 HES 787

Cross Index No. 5009 T. 35N R. 25W PMM

Adopted July 1, 1981, Montana Board of Professional Engineers & Land Surveyors

Sec. 5



● corner this sheet

