

CERTIFIED CORNER RECORDATION

Corner Cor 4 of HES 787 T. 35N R. 25W P.M.M. Lincoln County

1. 1917 HES Original record by R.E. Maurer:

Set:

A small stone, marked with a cross (X) under a sandstone 26x14x6 ins., 16 ins. in the ground, marked 4 H.E.S. 787 on the SW face and a cross on top for the exact corner point.

From which:

A Tamarack, 10 ins. in diam. bears S7°42'E, 112 lks. dist. mkd. with X and scribed 4 HES 787 BT;

A Tamarack, 6 ins. in diam. bears N12°56'E, 158 lks. dist. mkd. with X and scribed 4 HES 787

BT;

A mound of earth 4 ft. base, 2 ft. high, SW of corner.

1960 BLM Resurvey by D. Cunningham:

Found: A Sandstone, 24x16x6 ins., set and mkd. as above.

A Larch, 12 ins. in diam., bears N1°54"W, 156 lks. dist., mkd. X 4 HES 787 BT

(Record N12°56'E, 158 lks);

Set:

An Iron Post, 30 ins. long, 2½ ins. diam., 26 ins. in the ground, in concrete, with Brass Cap mkd. as shown.

A Fir, 9 ins. in diam. bears S26½'E, 7 lks. dist., mkd. 4 HES 787 BT;

A Fir, 14 ins. in diam. bears N73°W, 76 lks. dist., mkd. 4 HES 787 BT;

Bury original stone alongside and rebuild the mound of stone, 3 ft. base, 2 ft. high, SW of the

IP.

1991 Resurvey by Alvah F. Hughes:

Found:

A BLM Brass Cap on 2½ ins. diam. iron pipe, 2 ins. above ground with rock collar.

A Larch, 11 ins. in diam. bears North 102.9 ft. (155.9 lks) dist., visible scribing (Original)

A Fir, 20 ins. in diam. bears N72°W, 50.1 ft. (75.9 lks) dist., healed face.

A Fir stump, S22°E, 4.6 ft. (7.0 lks) dist., mkd. 4 HES 787 BT, visible scribing.

Established:

Painted red bands around the BTs and attached LSM & BT signs;

A 6 ft. galvanized steel guard post with LSM & PB decals, West, 4 ft. dist.

2. Found:

A BLM Brass monument, 3¼ ins. in diam., 2 ins. out of ground surrounded by a mound of stone, mkd. as shown;

A Western Larch, 11 ins. in diam., bears North, 102.90 ft. dist., with a partially healed face, illegible scribing visible;

A Douglas Fir, 21 ins. in diam., bears N72°W, 50.10 ft. dist., with a well healed face;

A Douglas Fir stump, 14 ins. in diam., 5 ft. tall, lying down, bears S22°E, 4.60 ft. dist. with HES 787 BT visible;

A Steel post, bears West, 4 ft. dist. with LSM & Boundary tags.

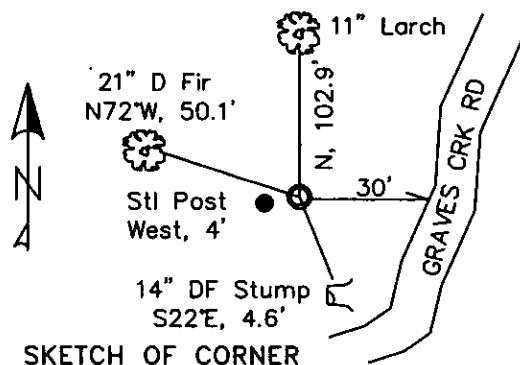
3. Stacked and painted a mound of stone around monument.

Repainted blazes and rings on all BTs.

T35N R25W

4
HES
787
TR A
1960

MAGNETIC DECLINATION - 16° EAST



SKETCH OF CORNER

CERTIFICATION

CURT HECKROTH

certify the information shown herein is true and correct.

Curt Heckroth
Professional Land Surveyor

LAWRENCE A. GLAHE

certify that this Corner Recordation represents work performed by me or under my direction in compliance with the "Corner Recordation Act" (MCA 7-22-101, et seq.)

9748 LS

Lawrence A. Glahe
Professional Land Surveyor

Date: 11-10-10

9748 LS

Employer: GLAHE & ASSOC., INC.

Office of Clerk and Recorder. County of Lincoln. This "corner
229651 BOOK: CCR CC&R'S PAGE: 11635 Pages: 1

record" was filed for record. STATE OF MONTANA LINCOLN COUNTY

was noted on the cross-ir RECORDED: 11/15/2010 1:30 KOI: CC&R'S

book No. TAMMY D. LAUER CLERK AND RECORDER

FEE: \$0.00 BY: *Tammy D. Lauer*
TO: GLAHE & ASSOC., INC. P.O. BOX 1863, SANDPOINT, ID. 83860,

4 HES 787

Cross Index No. 5008 T. 35N R. 25W PMM

Adopted July 1, 1981, Montana Board of Professional Engineers & Land Surveyors

Sec. 6

● corner this sheet

[The page contains extremely faint, illegible text, likely bleed-through from the reverse side. The text is organized into several paragraphs, with some lines appearing as distinct sentences. Due to the low contrast, specific words and punctuation cannot be transcribed.]