

CERTIFIED CORNER RECORDATION

Corner N 16th Sec 7 T. 35N R. 25W P.M.M. Lincoln County

Found:

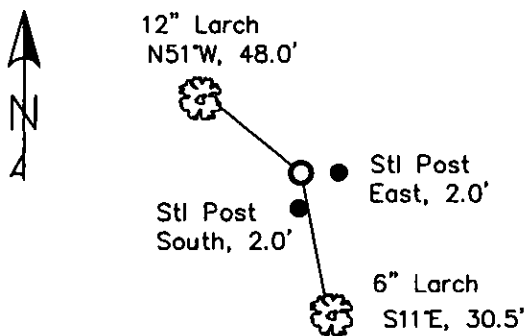
A 5/8 ins. Rebar with Plastic Cap set by LS 13102.

Set:

(Put a new 3 1/4 inch) USFS Aluminum Monument (on existing 5/8 ins. Rebar) as shown.  
A Larch, 6 ins. in diam., bears S11°E, 30.5 ft. dist. scribed "N 1/16th S7 BT";  
A Larch, 12 ins. in diam., bears N51°W, 48.0 ft. dist., scribed "N1/16th S7 BT";  
Steel posts with decals, bear South, 2.5 ft. dist. and East, 2.5 ft. dist.



MAGNETIC DECLINATION - 15°4' EAST



SKETCH OF CORNER

CERTIFICATION

I, Erich Shrack  
certify the information shown herein is true and correct.

I, LAWRENCE A. GLAHE  
certify that this Corner Record represents work performed by me or under my direction in compliance with the "Corner Recordation Act" (H.R. 22-101, et seq. U.S.A.)

Date: 11/15/10 9748 LS  
Employer: GLAHE & ASSOC., INC.

Office of Clerk and Recorder, County of Lincoln. This "corner record" was filed for reco 229647 BOOK: CCR CC&R'S PAGE: 11631 Pages: 1  
STATE OF MONTANA LINCOLN COUNTY  
was noted on the cross-RECORDED: 11/15/2010 1:26 KOI: CC&R'S  
book No. TAMMY D. LAUER CLERK AND RECORDER  
FEE: \$0.00 BY: [Signature]  
TO: GLAHE & ASSOC., INC. P.O. BOX 1863, SANDPOINT, ID. 83860,  
Cross Index No. F-1 T. 35N R. 25W PMM

Adopted July 1, 1981, Montana Board of Professional Engineers & Land Surveyors

Sec. 7


● corner this sheet

# THE JOURNAL OF THE

AMERICAN MEDICAL ASSOCIATION

PUBLISHED WEEKLY

VOLUME 100, NUMBER 10, MAY 19, 1957

CONTENTS

Editorial

Original Articles

1. The Role of the Physician in the Management of the Patient with a Chronic Disease  
2. The Role of the Physician in the Management of the Patient with a Chronic Disease  
3. The Role of the Physician in the Management of the Patient with a Chronic Disease

Editorial

Original Articles

1. The Role of the Physician in the Management of the Patient with a Chronic Disease  
2. The Role of the Physician in the Management of the Patient with a Chronic Disease  
3. The Role of the Physician in the Management of the Patient with a Chronic Disease

Editorial

Original Articles

1. The Role of the Physician in the Management of the Patient with a Chronic Disease  
2. The Role of the Physician in the Management of the Patient with a Chronic Disease  
3. The Role of the Physician in the Management of the Patient with a Chronic Disease