

CERTIFIED CORNER RECORDATION

Corner E 1/4 Sec 7 T. 35N R. 25W P.M.M. Lincoln County

1. 1894 G.L.O. Original Record by A.L. Jaqueth et al:

Set:

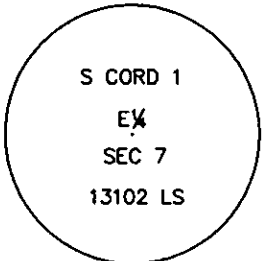
- A Limestone, 22x8x6 ins., 17 ins. in the ground for 1/4 sec. cor., mkd. 1/4 on West face;
- From which:
- A Fir, 12 ins. in diam., bears N60°30'E, 40 lks. dist., mkd. 1/4 S. BT;
- A Fir, 8 ins. in diam., bears N10°W, 49 lks. dist., mkd. 1/4 S BT;

2002 Certified Corner Record by Samuel J. Cordi. 13102LS

No Original Evidence found.

Set:

- A Galvanized Pipe, 1 ins. in diam., 30 ins. long, 24 ins. in the ground with
- A Brass Cap, 2 3/8 ins. in diam., mkd. as shown:
- A Fir, 12 ins. in diam., bears N40°E, 18.10 ft. dist., mkd. with 2 blazes;
- A Fir, 12 ins. in diam., bears S65°E, 15.80 ft. dist., mkd. with 2 blazes;
- A Pine, 8 ins. in diam., bears S50°W, 5.90 ft. dist., mkd. with 2 blazes;



2. Found:

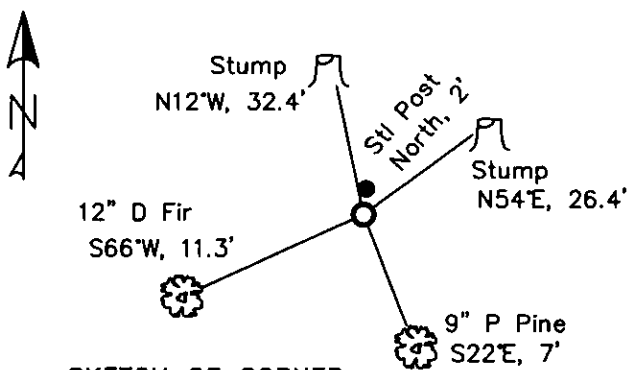
- Pieces of limestone monument.
- A Stump, GLO BT, bears N54°E, 26.4 ft. dist.
- A Stump, GLO BT, bears N12°W, 32.4 ft. dist. scribing visible.
- A Brass Cap, 2 1/2 ins. in diam. bears S69°E, 8.0 ft. dist. from corner, in rock pile and mkd. as shown:
- A Fir, 14 ins. in diam., bears N40°E, 18.0 ft. marked with Z blazes.
- A Fir, 13 ins. in diam., bears S65°E, 15.8 ft. marked with Z blazes.
- A Pine, 10 ins. in diam., bears S50°W, 5.9 ft. marked with Z blazes.

3. Set:

- A USFS Aluminum Monument, 3 1/4 ins. in diam., 0.4 ft. above ground in surface rock cairn, mkd. as shown;
 - A Ponderosa Pine, 9 ins. in diam., bears S22°E, 7.0 ft. dist. scribed "1/4 S8 BT";
 - A Douglas Fir, 12 ins. in diam., bears S66°W, 11.3 ft. dist., scribed "1/4 S7 BT";
 - A Steel post with LSM sign, bears North, 2.0 ft. dist.
- Placed BT tags on GLO BT remains.



MAGNETIC DECLINATION - 15°4' EAST



SKETCH OF CORNER

CERTIFICATION

I, Erich Shrack
certify the information shown herein is true and correct.

I, LAWRENCE A. GLAHE
certify that this Corner Record Book represents work performed by me or under my direct supervision in compliance with the "Corner Registration Act" (MCA 22-1-01, et seq. M.C.A.)

Date: 11-15-10 9748 LS
Employer: GLAHE & ASSOC., INC.

REGISTERED SURVEYOR

Office of Clerk and Recorder, County of Lincoln. This "corner

record" was filed for record of 229645 BOOK: CCR CC&R'S PAGE: 11629 Pages: 1 Sec. 7

was noted on the cross-index STATE OF MONTANA LINCOLN COUNTY

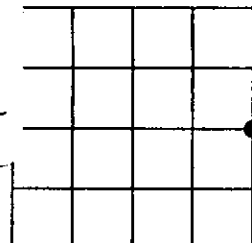
book No. TAMMY D. LAUER CLERK AND RECORDER

FEE: \$0.00 BY: [Signature]

TO: GLAHE & ASSOC., INC. P.O. BOX 1863, SANDPOINT, ID. 83860,

Cross Index No. G-5 T. 35N R. 25W PMM

Adopted July 1, 1981, Montana Board of Professional Engineers & Land Surveyors



● corner this sheet

