

CERTIFIED CORNER RECORDATION

Corner W $\frac{1}{4}$ Sec 7 T. 35N R. 25W P.M.M. Lincoln County

1. 1893 G.L.O. Original Record by A.L. Jaqueth et al:

Set:

A Limestone, 12x10x7 ins., 8 ins. in the ground for $\frac{1}{4}$ sec, mkd. $\frac{1}{4}$ on N face;
From which:

A Tamarack, 14 ins. in diam., bears N11°E, 65 lks., dist. mkd. $\frac{1}{4}$ S BT;
A Fir, 14 ins. diam., bears N68°W, 24 lks. dist., mkd. $\frac{1}{4}$ S BT.

1960 BLM Remonumentation by Cunningham:

Found:

A Limestone, 12x10x7 ins., mkd. $\frac{1}{4}$ on one face, lying on the ground at intersection of fences,
From which;

A Fir stump, 18 ins. in diam., bears N14°E, 65 lks. dist., no markings visible;
A Fir stump, 16 ins. in diam., bears N68°W, 24 lks. dist., dimly mkd. BT;

Set:

An Iron post, 30 ins. long, 2 $\frac{1}{2}$ ins. diam., 26 in the ground, in concrete, with
A Brass Cap, mkd. as shown;

A Larch, 6 ins. diam., bears N77°E, 21 lks. dist., mkd. $\frac{1}{4}$ S7 BT;

A Larch, 10 ins. diam., bears N39 $\frac{1}{2}$ °W, 7 lks. dist., mkd. $\frac{1}{4}$ S12 BT;

Buried the original stone alongside, and raised a mound of stone, 3 ft. base, 2 ft. high,
West of the Iron post.

2. Found:

A BLM Brass Cap, 3 $\frac{1}{4}$ ins. in diam., 0.1' above ground, mkd. as shown;

A Larch, 12 ins. in diam., bears N77°E, 14.0 ft. dist., healed face;

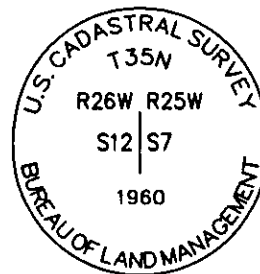
A Larch, 12 ins. in diam., bears N39 $\frac{1}{2}$ °W, 4.6 ft. dist., healed face, 2x4 fence post location
covers healed face, wire fence attached.

A Larch, 10 ins. in diam., bears S11°E, 9.6 ft. dist., healed face;

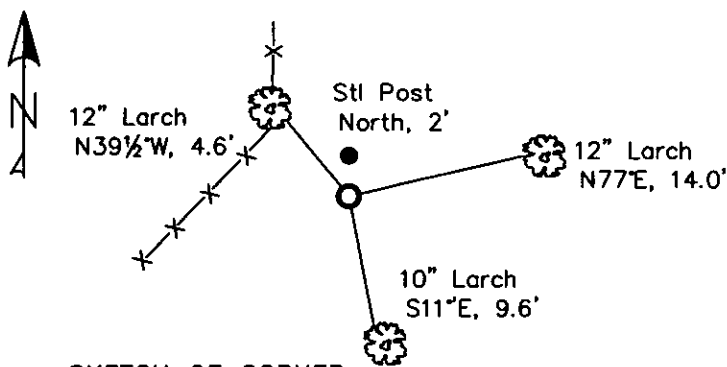
A Steel Post, with LSM decal, bears North, 2 ft. dist.

3. Painted a mound of rock near monument;

Painted blazes and bands on all BTs; Replaced tag and sign where needed.



MAGNETIC DECLINATION - 15°4' EAST



SKETCH OF CORNER

CERTIFICATION

I, Erich Shrack
certify the information herein is true and correct.

I, LAWRENCE A. GLAHE
certify that this Corner Record represents work performed by me or under my direct supervision in compliance with the "Corner Recordation Act" (Pub. Law 86-22-101, et seq. U.S.A.)

Date: 11-10-10 9748 LS
Employer: GLAHE & ASSOC., INC.

Office of Clerk and Recorder, County of Lincoln. This "corner

record" was filed for record 229642 BOOK: CCR CC&R'S PAGE: 11626 Pages: 1

was noted on the cross-in: RECORDED: 11/15/2010 1:21 KOI: CC&R'S

book No. TAMMY D. LAUER CLERK AND RECORDER

FEE: \$0.00 BY: Lawrence A. Glahe
TO: GLAHE & ASSOC., INC. P.O. BOX 1863, SANDPOINT, ID. 83860

Cross Index No. G-1 T. 35N R. 25W PMM

Adopted July 1, 1981, Montana Board of Professional Engineers & Land Surveyors

Sec. 7

● corner this sheet

1944

1. The first part of the report is a general statement of the purpose and scope of the study. It is followed by a brief review of the literature on the subject. The second part of the report is a description of the methods used in the study. This includes a description of the subjects, the experimental design, and the data collection procedures. The third part of the report is a presentation of the results of the study. This includes a description of the data, a summary of the findings, and a discussion of the implications of the results. The fourth part of the report is a conclusion. This includes a summary of the main findings and a statement of the author's conclusions. The fifth part of the report is a list of references. This includes a list of the books, articles, and other sources used in the study.

2. The first part of the report is a general statement of the purpose and scope of the study. It is followed by a brief review of the literature on the subject. The second part of the report is a description of the methods used in the study. This includes a description of the subjects, the experimental design, and the data collection procedures. The third part of the report is a presentation of the results of the study. This includes a description of the data, a summary of the findings, and a discussion of the implications of the results. The fourth part of the report is a conclusion. This includes a summary of the main findings and a statement of the author's conclusions. The fifth part of the report is a list of references. This includes a list of the books, articles, and other sources used in the study.