

CERTIFIED CORNER RECORDATION

Corner N¼ Cor Sec 7 T. 35N R. 25W P.M.M. Lincoln County

1. 1894 G.L.O. Original Record by A.L. Jaqueth et al:

Set:

A Post, 3 ft. long, 3 ins. square, 24 ins. in the ground for ¼ Sec. Cor., mkd. ¼ S on North face;

From which;

A Tamarack, 14 ins. in diam., bears S13°13'E, 39 lks. dist., mkd. ¼ S BT;

A Tamarack, 8 ins. in diam., bears N28°E, 5 lks. dist., mkd. ¼ S BT.

1960 BLM Remonumentation by Cunningham:

Found:

A Larch, 9 ins. in diam., bears N28°E, 5 lks. dist., mkd. ¼ S;

A dead Larch, 15 ins. in diam., bears S14½°E, 39 lks. dist., mkd. ¼;

Set:

An Iron post, 30 ins. long, 2½ ins. diam., 26 in the ground, in concrete, with

A Brass Cap, mkd. as shown;

A Larch, 11 ins. diam., bears N7½°E, 13 lks. dist., mkd. ¼ S6 BT;

A Fir, 9 ins. diam., bears S41½°E, 17 lks. dist., mkd. ¼ S7 BT;

Raised a mound of stone, 3 ft. base, 2 ft. high, West of Iron post.

2. Found:

A BLM Brass Cap, 3¼ ins. in diam., 0.3 ft. above ground, mkd. as shown;

A Larch, 15 ins. in diam., bears N7°30'E, 8.5 ft. dist., tag reads 13¼ lks, healed face;

A Douglas Fir, 16 ins. in diam., bears S21°E, 11.7 ft. dist., healed face;

A Stump, bears N28°E, 5 lks. dist., visible scribing;

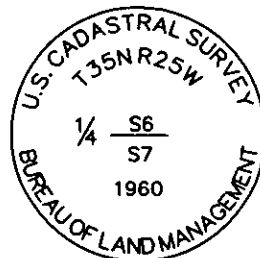
A Stump, bears S13°E, 25.5 ft. dist., visible scribing;

3. Stacked and painted a mound of rock around monument;

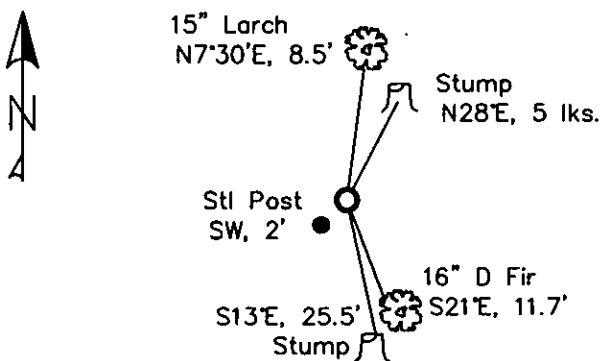
Painted blazes and bands on all BTs; Replaced tag and sign where needed.

Established:

A Steel Post, with LSM and PB decals, bears Southwest, 2' dist.



MAGNETIC DECLINATION - 15°4' EAST



SKETCH OF CORNER

CERTIFICATION

I, Erich Shrack
 certify the information above herein is true and correct.
 (Print Name and Party Last)

I, LAWRENCE A. GLAHE
 certify that this Corner Recordation was performed by me or under my direction in compliance with the "Corner Recordation Act" (76-22401, et seq. U.S.C.A.)
 9748 LS

Date: 11-10-10 9748 LS
 Employer: GLAHE & ASSOC., INC.

Office of Clerk and Recorder, County of Lincoln. This "corner

record" was filed for reco 229641 BOOK: CCR CC&R'S PAGE: 11625 Pages: 1

was noted on the cross-| STATE OF MONTANA LINCOLN COUNTY

book No. RECORDED: 11/15/2010 1:20 KOI: CC&R'S

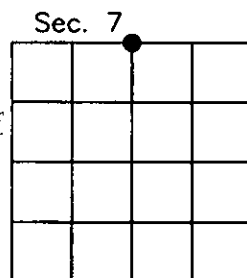
TAMMY D. LAUER CLERK AND RECORDER

FEE: \$0.00

TO: GLAHE & ASSOC., INC. P.O. BOX 1863, SANDPOINT, ID. 83860,

Cross Index No. E-3 T. 35N R. 25W PMM

Adopted July 1, 1981, Montana Board of Professional Engineers & Land Surveyors



● corner this sheet

[illegible]