

CERTIFIED CORNER RECORDATION

Corner NW Cor Sec 7 T. 35N R. 25W P.M.M. Lincoln County

1. 1894 G.L.O. Original Record by A.L. Jaqueth et al:

Set:

A Limestone, 18x10x5 ins., 12 ins. in the ground for cor. to Secs. 1,6, 7 and 12, mkd. with 5 notches and 1 notch on North edges;

From which:

A Tamarack, 4 ins. in diam., bears N34°E, 116 lks., dist. mkd. T35N R25W S6 BT;

A Cottonwood, 7 ins. diam., bears S40°E, 20 lks. dist., mkd. T35N R25W S7 BT;

A Fir, 15 ins. in diam., bears S30°W, 13 lks. dist., mkd. T35N R26W S12 BT;

A Cottonwood, 12 ins. in diam., bears N39°10'W, 92 lks. dist., mkd. T35N R26W S1 BT.

1960 BLM Remonumentation by Cunningham:

Found:

A Limestone, 18x10x5 ins., set and mkd. as record;

From which:

A Larch stump, 9 ins. in diam., bears N34°E, 116 lks. dist., mkd. BT;

Set:

An Iron post, 30 ins. long, 2½ ins. diam., 26 in the ground, in concrete, with

A Brass Cap, mkd. as shown;

A Fir, 14 ins. diam., bears N64 ¾°E, 114 lks. dist., mkd. T35N R25W S6 BT;

Buried the original stone alongside the Iron post.

2. Found:

A BLM Brass Cap, ¾ ins. in diam., mkd. as shown;

A Douglas Fir, 19 ins. in diam., bears N65°E, 75.3 ft. dist., healed face;

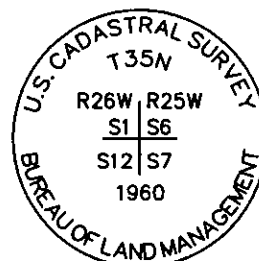
Corner of House foundation bears S9°W, 32.1 ft. dist.

3. Painted blazes and bands on all BTs; Replaced tag and sign where needed.

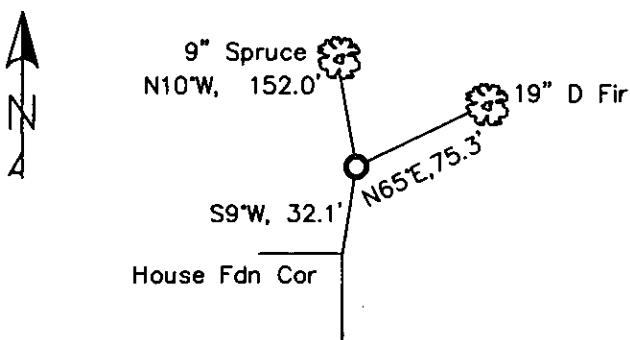
Established:

A Spruce, 9 ins. in diam., bears N10°W, 152.0 ft. dist., scribed "T35N R26W S1 BT";

A Steel Post, with LSM and PB decals bears North, 2 ft. dist.



MAGNETIC DECLINATION - 15°4' EAST



SKETCH OF CORNER

CERTIFICATION

I, Erich Shrack,
certify the information herein based is true and correct.

LAWRENCE A. GLAHE
certify that the Corner location is correctly represents work
performed by me or under my direction in compliance with
the "Corner Registration Act" (Mont. Code Annotated, § 82-1-101, et seq. M.C.A.)

9748 LS
REGISTERED
LAND SURVEYOR

Date: 11-10-10 9748 LS
Employer: GLAHE & ASSOC., INC.

Office of Clerk and Recorder, County of Lincoln. This "corner

record" was filed for reco

229640 BOOK: CCR CC&R'S PAGE: 11624 Pages: 1

STATE OF MONTANA LINCOLN COUNTY

was noted on the cross-

RECORDED: 11/15/2010 1:19 KOI: CC&R'S

book No. _____

TAMMY D. LAUER CLERK AND RECORDER

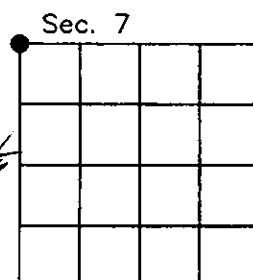
FEE: \$0.00

BY: Lawrence A. Glahe

TO: GLAHE & ASSOC., INC. P.O. BOX 1863, SANDPOINT, ID. 83860,

Cross Index No. E-1 T. 35N R. 25W PMM

Adopted July 1, 1981, Montana Board of Professional Engineers & Land Surveyors



● corner this sheet

