

# CERTIFIED CORNER RECORDATION

Corner SE Cor Sec 7 T. 35N R. 25W P.M.M. Lincoln County

## 1. 1894 G.L.O. Original Record by A.L. Jaqueth et al:

Set:

A Limestone, 12x8x6 ins., 8 ins. in the ground, mkd. with 4 notches on South and 5 notches on East edges, from which:

A Fir, 8 ins. in diam., bears N33°45' E, 49 lks. dist., mkd. "T35N R25W S8 BT";

A Fir, 12 ins. in diam., bears S13°45' E, 62 lks. dist., mkd. "T35N R25W S17 BT";

A Fir, 12 ins. in diam., bears S75°45' W, 30 lks. dist., mkd. "T35N R25W S18 BT";

A Tamarack, 12 ins. in diam., bears N62°45' W, 42 lks. dist., mkd. "T35N R25W S7 BT";

## 1960 BLM Remonumentation by Cunningham:

Found:

A Stump hole, bears N33 3/4° E, 49 lks. dist., with fallen log mkd. "T35N R25W S8 BT";

A Fir stump, 13 ins. in diam., bears S15 1/2° E, 62 lks. dist., mkd. N 25;

A Fir stump, 13 ins. in diam., bears S72 1/4° W, 28 lks. dist., mkd. "T35N R25W S18 BT";

A Larch, 13 ins. in diam., bears N62 3/4° W, 42 lks. dist., visible marks N R25W S7 BT;

Set:

A Iron Post, 30 ins. long, 2 1/2 ins. in diam., 26 ins. in the ground with

A Brass Cap, mkd. as shown:

Buried the original stone alongside and raise a mound of stone, 3 1/2 ft. base, 2 1/2 ft. high, West of the Iron post.

## 2. Found:

A BLM Brass Cap, 3 1/4 ins. in diam., flush with ground, mkd. as shown;

A Larch, 10 ins. in diam., bears N35 1/4° E, 20 1/2 lks. (13 ft.) dist., healed blaze;

A Larch, 10 ins. in diam., bears S58 3/4° E, 47 1/4 lks. (31 ft.) dist., healed blaze;

A Larch, 8 ins. in diam., bears S48 1/4° W, 10 lks. (6.8 ft.) dist., healed blaze;

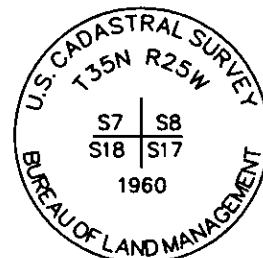
A Larch snag, bears N62° W, 42 lks. (28 ft.) dist.

## 3. Painted blazes and bands on all BTs; Replaced tag and sign where needed.

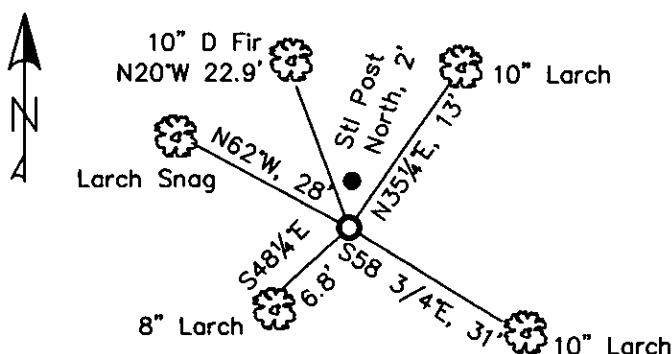
Established:

A Douglas Fir, 10 ins. in diam., bears N20° W, 22.9 ft. dist., scribed T35N R25W S7 BT;

A Steel Post, with LSM decal bears North, 2 ft. +/- dist.



MAGNETIC DECLINATION - 15°4' EAST



SKETCH OF CORNER

CERTIFICATION

I, Erich Shrack  
certify the information shown herein to be true and correct.

I, LAWRENCE A. GLAHE  
certify that this Corner Record represents work performed by me or under my direction in compliance with the "Corner Recordation Act" (Title 22-101, et seq. M.C.A.)

Date: 11/15/10 9748 LS  
Employer: GLAHE & ASSOC., INC.

Office of Clerk and Recorder, County of Lincoln. This "corner

record" was filed for recor 229639 BOOK: CCR CCR'S PAGE: 11623 Pages: 1

was noted on the cross-ir RECORDED: 11/15/2010 1:18 KOI: CCR'S

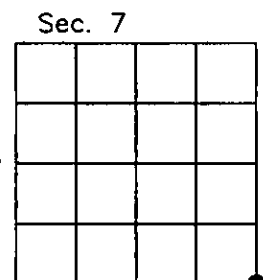
book No. TAMMY D. LAUER CLERK AND RECORDER

FEE: \$0.00 BY: Deanna Davis Deputy

TO: GLAHE & ASSOC., INC. P.O. BOX 1863, SANDPOINT, ID. 83860.

Cross Index No. J-5 T. 35N R. 25W PMM

Adopted July 1, 1981, Montana Board of Professional Engineers & Land Surveyors



● corner this sheet

