

CERTIFIED CORNER RECORDATION

Corner W-W-E 256th S20/29 T. 35N R. 25W P.M.M. Lincoln County

1. Original GLO Notes:

Set:

This corner was never set.

1982 M.L. Haiges:

Set:

An Aluminum Monument with $3\frac{1}{4}$ ins. dia. cap, 24 ins. in the ground, with protective ring of stone;

From which:

A Larch, 9 ins. in diam., bears N21°E, 22.2 ft. dist., scribed "WWE 1/256 S20 BT";

A Larch, 8 ins. in diam., bears S62°E, 18.2 ft. dist., scribed "WWE 1/256 S29 BT".

2. Found:

A USDA Aluminum monument, $3\frac{1}{4}$ ins. diam. cap, 6 ins. out of ground surrounded by a mound of stone, mkd. as shown;

A Western Larch, 10 ins. in diam., bears N21°E, 22.20 ft. dist., healed face;

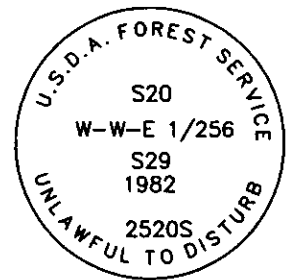
A Western Larch, 9 ins. in diam., bears S62°E, 18.20 ft. dist., healed face;

A Carsonite Post with boundary sign bears South, 6 ft. dist.

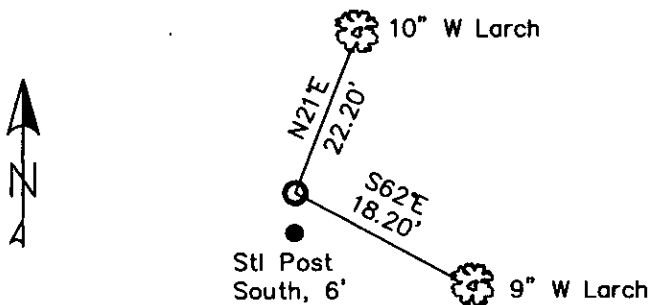
3. Restacked and painted stones around monument;

Repainted blazes and rings on all BTs; Placed LSM signs on back of BTs;

Placed Steel Post with LSM & Boundary tags in front of carsonite post, South, 6 ft. dist.



MAGNETIC DECLINATION - 16° EAST



SKETCH OF CORNER

CERTIFICATION

I, CURT HECKROTH
 certify the information shown herein to be true and correct.

I, LAWRENCE A. GLAHE
 certify that this Corner Record correctly represents work performed by me or under my direction in compliance with the "Corner Restoration Act" (PL 92-101, et seq. 1972).

Date: 11-10-10 9748 LS
 Employer: GLAHE & ASSOC., INC.

Office of Clerk and Recorder, County of Lincoln. This "corner

record" was filed for record on 229634 BOOK: CCR CC&R'S PAGE: 11619 Pages: 1

was noted on the cross-index STATE OF MONTANA LINCOLN COUNTY

book No. TAMMY D. LAUER CLERK AND RECORDER

FEE: \$0.00

BY: Lawrence Glahe

TO: GLAHE & ASSOC., INC. P.O. BOX 1863, SANDPOINT, ID. 83860

Cross Index No. R-7.25 T. 35N R. 25W PMM

Adopted July 1, 1981, Montana Board of Professional Engineers & Land Surveyors

Sec. 29

● corner this sheet

1. The first step is to identify the key components of the system. This includes understanding the hardware, software, and data involved.

• • • • •

• • • • •

1. *Journal of the American Medical Association*, 1997; 277: 1033-1038.

100

[illegible]

1. *Chlorophyll a* (Chl *a*)