

CERTIFIED CORNER RECORDATION

Corner W 1/4 Cor S32 T. 35N R. 25W P.M.M. Lincoln County

1. Original GLO Notes:

Set:

A Limestone, 12x8x8, 8 ins. in the ground for cor. mkd. 1/4 on W. face;

From which:

A Tamarack, 10 ins. in diam., bears N52°E, 8 lks. dist., mkd. 1/4 S BT;

A Tamarack, 12 ins. in diam., bears S82°45'W, 19 lks. dist. mkd. 1/4 S BT

BLM Record:

Original Bearing Trees:

A stump hole, bears S33°E, 8 lks. dist., with fallen log having illegible markings;

A stump hole, bears S49°W, 18 lks. dist., with fallen log having illegible markings.

Set:

An Iron Post, 30 ins. long, 2 1/2 ins. diam., 28 ins. in the ground, in concrete with

A Brass Cap mkd as shown:

A Fir, 6 ins. in diam., bears S23 3/4°E, 15 lks. dist., mkd. 1/4 S32 BT;

A Fir, 6 ins. in diam., bears S31°W, 43 lks. dist., mkd. 1/4 S31 BT;

1982 James H. Burton:

Found:

A BLM Brass Cap Monument as described above,

From which:

A Fir, 9 ins. in diam., bears S24°E, 10.0 ft. dist., with scar;

A Fir, 9 ins. in diam., bears S31°W, 28.2 ft. dist., with scar;

A Stump hole, with tree down, bears N52°E, 4.0 ft. dist., with scribing;

2. Found:

A BLM Brass monument, 3 1/4 ins. diam. cap, flush with ground, mkd. as shown;

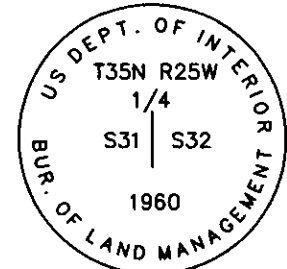
A Douglas Fir, 13 ins. in diam., bears S24°E, 10.00 ft. dist., healed face;

A Douglas Fir, 12 ins. in diam., bears S31°W, 28.20 ft. dist., healed face;

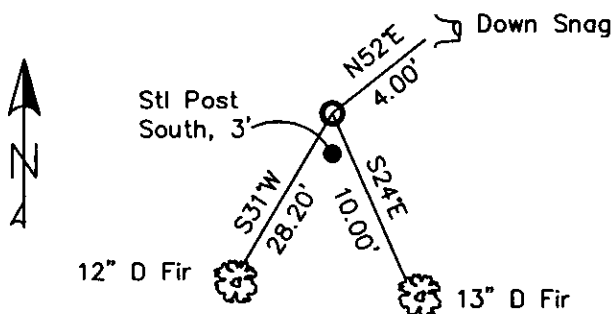
A Down dead Snag, bears N52°E, 4.00 ft. dist., with chop marks & BLM BT tag;

A Steel Post with LSM and Boundary tags, bears South, 3 ft. dist.

3. Stacked and painted a mound of stone around monument; Repainted blazes and rings on BTs, placed BT tags on all BTs.



MAGNETIC DECLINATION - 16° EAST



SKETCH OF CORNER

CERTIFICATION

I, CURT HECKROTH
certify the information shown is true and correct.
Signature Ground Party Agent

I, LAWRENCE A. GLAHE
certify that this Corner Location Survey represents work
performed by me or under my direction in compliance with
the "Corner Recordation Act" (P.L. 86-601, et seq. 43 U.S.C.)
Signature Registered Professional Engineer
Date 11-10-12 9748 LS
Employer: GLAHE & ASSOC., INC.

Office of Clerk and Recorder, County of Lincoln. This "corner

record" was filed for record 229632 BOOK: CCR CC&R'S PAGE: 11617 Pages: 1

was noted on the cross-ir. RECORDED: 11/15/2010 11:46 KOI: CC&R'S

book No. TAMMY D. LAUER CLERK AND RECORDER

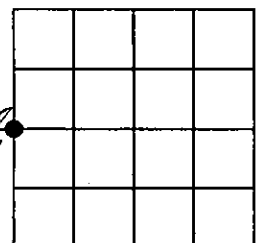
FEE: \$0.00

TO: GLAHE & ASSOC., INC. P.O. BOX 1863, SANDPOINT, ID. 83860,

Cross Index No. X-5 T. 35N R. 25W PMM

Adopted July 1, 1981, Montana Board of Professional Engineers & Land Surveyors

Sec. 32



● corner this sheet

the 1990s, the number of people in the world who are undernourished has declined by 100 million, and the number of people who are malnourished has declined by 200 million. The number of people who are undernourished has declined by 100 million, and the number of people who are malnourished has declined by 200 million. The number of people who are undernourished has declined by 100 million, and the number of people who are malnourished has declined by 200 million.

Journal of Management Education 30(6)p.789-804
© The Author(s) 2006. Reprints and permissions:
<http://www.sagepub.com/journalsPermissions.nav>

[illegible]

Journal of Management Studies, 36(7), 809–825.

[illegible]

100

1. The first part of the document is a letter from the author to the reader, explaining the purpose of the study and the methods used. The letter is dated 1998 and is signed by the author.