

CERTIFIED CORNER RECORDATION

Corner C-N-SW 1/64th S32 T. 35N R. 25W P.M.M. Lincoln County

1. Original GLO Notes:
THIS CORNER WAS NEVER SET.

1982 M.L. HAIGES:

Set:

An Alum. Monument, 2 1/2 ins. x 30 ins. with 3 1/4 ins. cap, 24 ins. in the ground, with a protective ring of stone:

From which:

A Larch, 8 ins. in diam., bears S22°E, 21.0 ft. dist., scribed CNSW 1/64 BT;

A Fir, 8 ins. in diam., bears S59°W, 10.3 ft. dist., scribed CNSW 1/64 BT;

2. Found:

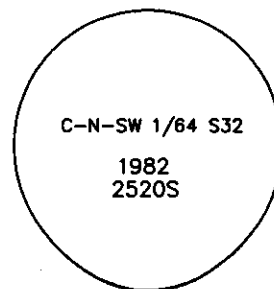
A USDA Aluminum monument, 3 1/4 ins. in diam., 6 ins. in the ground surrounded by a mound of stone and mkd. as shown;

A Western Larch, 9 ins. in diam., bears S22°E, 21.00 ft. dist., healed face;

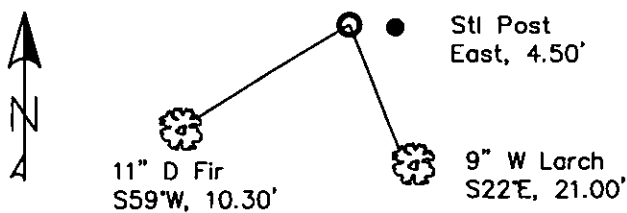
A Douglas Fir, 11 ins. in diam., bears S59°W, 10.30 ft. dist., healed face;

A Carsonite Post with LSM and Boundary tags, bears East, 4.50 ft. dist.

3. Restacked and painted stones around monument. Repainted blazes and rings on all BTs. Placed Steel post with LSM and Boundary tags in front of carsonite post bears East, 4.50 ft. dist.



MAGNETIC DECLINATION - 16° EAST



SKETCH OF CORNER

CERTIFICATION

I, CURT HECKROTH
certify the information shown herein is true and correct.

Curt Heckroth
Signature of Ground Party

I, LAWRENCE A. GLAHE
certify that the Corner Recordation represents work performed by me or under my supervision in compliance with the "Corner Recordation Act" (Mont. Code Annotated, § 82-101, et seq.)

Lawrence A. Glahe
Signature of Surveyor

9748 LS

REGISTERED SURVEYOR

Date: 11-10-10 9748 LS

Employer: GLAHE & ASSOC., INC.

Office of Clerk and Recorder, County of Lincoln. This "corner

record" was filed for record 229630 BOOK: CCR CC&R'S PAGE: 11615 Pages: 1

was noted on the cross-index STATE OF MONTANA LINCOLN COUNTY
RECORDED: 11/15/2010 11:44 KOI: CC&R'S

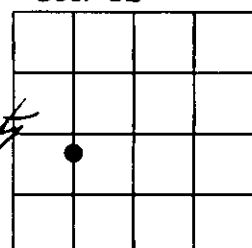
book No. TAMMY D. LAUER CLERK AND RECORDER

FEE: \$0.00 BY: *Debbie Lauer*
TO: GLAHE & ASSOC., INC. P.O. BOX 1863, SANDPOINT, ID. 83860

Cross Index No. X,Y-6 T. 35N R. 25W PMM

Adopted July 1, 1981, Montana Board of Professional Engineers & Land Surveyors

Sec. 32



● corner this sheet

1. *Journal of the American Medical Association*, 1997; 277: 1033-1036.