

CERTIFIED CORNER RECORDATION

Corner C-N-S 1/64th S32 T. 35N R. 25W P.M.M. Lincoln County

1. Original GLO Notes:
THIS CORNER WAS NEVER SET.

1982 M.L. HAIGES:

Set:

An Alum. Monument, 2½ ins. x 30 ins. with ¾ ins. cap, 24 ins. in the ground, with a protective ring of stone:

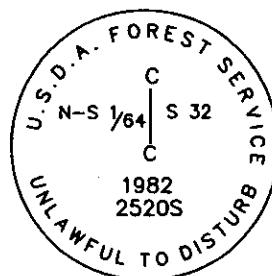
From which:

- A Larch, 9 ins. in diam., bears S60°E, 39.3 ft. dist., scribed CNS 1/64 BT;
- A Larch, 8 ins. in diam., bears S47°W, 6.3 ft. dist., CNS 1/64 BT;

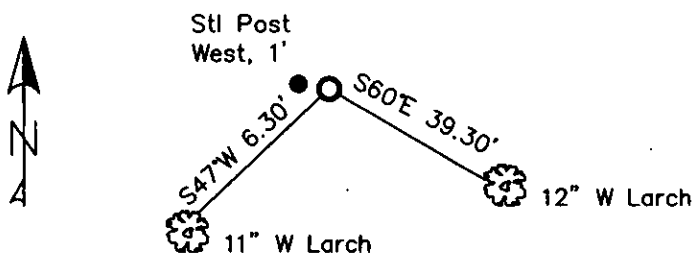
2. Found:

- A USDA Aluminum monument, ¾ ins. in diam., 6 ins. out of ground, surrounded by a mound of stone, mkd. as shown;
- A Western Larch, 12 ins. in diam., bears S60°E, 39.30 ft. dist., healed face;
- A Western Larch, 11 ins. in diam., bears S47°W, 6.30 ft. dist., healed face;
- A Steel post with Boundary Sign, bears West, 1 ft. dist.,
- A Carsonite post with LSM and Boundary sign, bears West, 3 ft. dist.

3. Restacked and painted stones around monument. Repainted blazes and rings on all BTs. Placed LSM tag on steel post, bears West, 1 ft. dist.



MAGNETIC DECLINATION - 16° EAST



SKETCH OF CORNER

CERTIFICATION

I, CURT HECKROTH
certify the information shown above is true and correct.

Curt Heckroth
Signature Ground Party

I, LAWRENCE A. GLAHE
certify that this Corner was lawfully represented work performed by me or under my direction in compliance with the "Corner Restoration Act" (P.L. 96-1401, et seq. (R.C.A.))

Lawrence A. Glahe
Signature Registered Professional Engineer

Date: 11-10-10 9748 LS

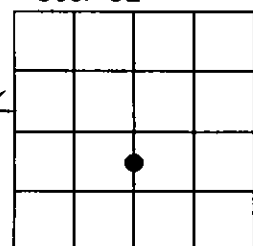
Employer: GLAHE & ASSOC., INC.

Office of Clerk and Recorder, County of Lincoln, This "corner
229629 BOOK: CCR CC&R'S PAGE: 11614 Pages: 1
record" was filed for re STATE OF MONTANA LINCOLN COUNTY
was noted on the cross RECORDED: 11/15/2010 11:43 KOI: CC&R'S
book No. TAMMY D. LAUER CLERK AND RECORDER
FEE: \$0.00 BY: *Tammy D. Lauer*
TO: GLAHE & ASSOC., INC. P.O. BOX 1863, SANDPOINT, ID. 83860,

Cross Index No. X,Y-7 T. 35N R. 25W PMM

Adopted July 1, 1981, Montana Board of Professional Engineers & Land Surveyors

Sec. 32



● corner this sheet

