

CERTIFIED CORNER RECORDATION

Corner C-W-NE-SE 1/256th S32 T. 35N R. 25W P.M.M. Lincoln County

1. Original GLO Notes:

THIS CORNER WAS NEVER SET.

1982 M.L. HAIGES:

Set:

An Alum. Monument, 2½ ins. x 30" with ¾ ins. cap, 24 ins. in the ground, with a protective ring of stone:

From which:

A Larch, 6 ins. in diam., bears N06°E, 31.3 ft. dist., scribed CWNESE 1/256 BT;

A Spruce, 7 ins. in diam., bears S67°E, 67.4 ft. dist., CWNESE 1/256 BT;

2. Found:

A USDA Aluminum monument, ¾ ins. in diam., 6 ins. out of ground, surrounded by a mound of stone, mkd. as shown;

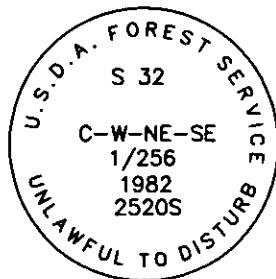
A Western Larch, 8 ins. in diam., bears N6°E, 31.30 ft. dist., healed face;

A Spruce, 9 ins. in diam., bears S67°E, 67.40 ft. dist., healed face;

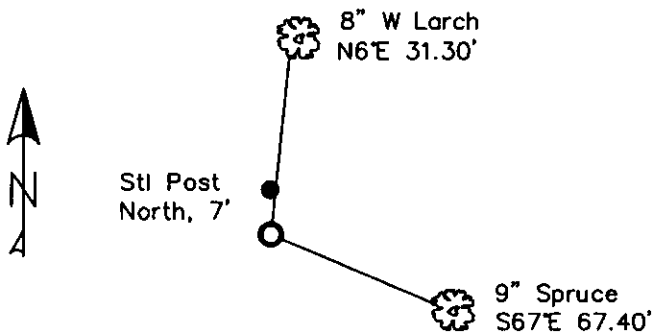
A Carsonite post with LSM and Boundary tags, bears North, 7 ft. dist.

3. Restacked and painted stones around monument. Repainted blazes and rings on all BTs.

Placed new BT tags. Placed Steel post with LSM and Boundary tags in front of carsonite post bears North, 7.00 ft. dist.



MAGNETIC DECLINATION - 16° EAST



SKETCH OF CORNER

CERTIFICATION

I, CURT HECKROTH
 certify the information shown herein is true and correct.

Curt Heckroth
 Signature of Ground Party

I, LAWRENCE A. GLAHE
 certify that the Corner Record Service represents work performed by me or under my direction in compliance with the "Corner Recordation Act" (M.C.A. 1-1-101, et seq.)

Lawrence A. Glahe
 Signature of Surveyor

Date: 11-10-10 9748 LS
 Registered Professional Surveyor

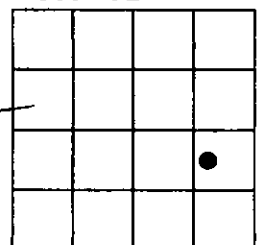
Employer: GLAHE & ASSOCIATES

Office of Clerk and Recorder, County of Lincoln. This "corner record" was filed for r 229628 BOOK: CCR CC&R'S PAGE: 11613 Pages: 1
 was noted on the cro: STATE OF MONTANA LINCOLN COUNTY
RECORDED: 11/15/2010 11:42 KOI: CC&R'S
TAMMY D. LAUER CLERK AND RECORDER
 book No. FEE: \$0.00 BY: *Lawrence A. Glahe*
TO: GLAHE & ASSOC., INC. P.O. BOX 1863, SANDPOINT, ID. 83860

Cross Index No. X,Y-8,9 T. 35N R. 25W PMM

Adopted July 1, 1981, Montana Board of Professional Engineers & Land Surveyors

Sec. 32



● corner this sheet

THE UNIVERSITY OF CHICAGO
LIBRARY

1968

1968