

CERTIFIED CORNER RECORDATION

Corner SE Cor S29 T. 35N R. 25W P.M.M. Lincoln County

1. Original GLO Notes:

Set:

A Limestone, 14x12x8 ins., 10 in the ground for cor. mkd. with 1 notch on S and 4 notches on E edge:

From which:

A Tamarack, 6 ins. in diam., bears N24°30'E, 61 lks. dist., mkd. T35N R25W S28 BT;

A Pine, 4 ins. in diam., bears S63°30'E, 41 lks. dist., mkd. T35N R25W S33 BT;

A Pine, 5 ins. in diam., bears S46°15'W, 45 lks. dist., mkd. T35N R25W S32 BT;

A Tamarack, 6 ins. in diam., bears N79°30'W, 43 lks. dist. mkd. T35N R25W S29 BT

BLM Record:

Found:

Original stone as described by the GLO, at the corner point.

From which:

A Larch, 10 ins. in diam., bears N24½°E, 61 lks. dist., markings overgrown;

A Pine, 10 ins. in diam., bears S63½°E, 41 lks. dist., markings overgrown;

A Stump hole, 7 ins. in diam. bears S46¼°W, 45 lks. dist., with fallen log having old blaze.

Set:

An Iron Post, 30 ins. long, 2½ ins. diam., 26 ins. in the ground, in concrete with

A Brass Cap mkd as shown:

A Larch, 9 ins. in diam., bears N23°E, 42 lks. dist., mkd. T35N R25W S28 BT;

A Larch, 7 ins. in diam., bears S41 3/4°E, 35 lks. dist., mkd. T35N R25W S33 BT;

A Larch, 6 ins. in diam., bears S25°W, 107 lks. dist, mkd. T35N R25W S32 BT;

A Fir, 9 ins. in diam., bears N54°W, 55 lks. dist., mkd. T35N R25W S29 BT'

1982 James H. Burton:

Found:

A BLM Brass Cap Monument as described above,

From which:

A Larch, 10 ins. in diam., bears N22°E, 28.0 ft. dist., with scar;

A Larch, 12 ins. in diam., bears N23°E, 39.7 ft. dist., with scribing;

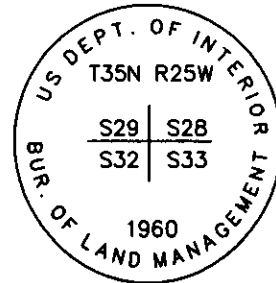
A Pine, 11 ins. in diam., bears S64°E, 26.4 ft. dist., with scribing;

A Larch, 8 ins. in diam., bears S43°E, 23.4 ft. dist., with scar;

A Larch, 11 ins. in diam., bears S25°W, 70.40 ft. dist., with scar;

A rotted stump, bears N80°W, 27.8 ft. dist., tree down with blaze;

A Fir, 15 ins. in diam., bears N54°W, 36.5 ft. dist., with scar;



2. Found:

A BLM Brass monument with 3¼ ins. cap, flush with ground, surrounded by a mound of stone, mkd. as shown;

A Western Larch, 10 ins. in diam., bears N22°E, 28.00 ft. dist., healed face;

A Western Larch, 12 ins. in diam., bears N23°E, 39.70 ft. dist., healed face;

A Western Larch, 9 ins. in diam., bears S43°E, 23.40 ft. dist., healed face;

A Western Larch Stump, 14 ins. in diam., bears S25°W, 70.40 ft. dist., no scribing;

A Douglas Fir, 19 ins. in diam., bears N54°W, 36.50 ft. dist., healed face;

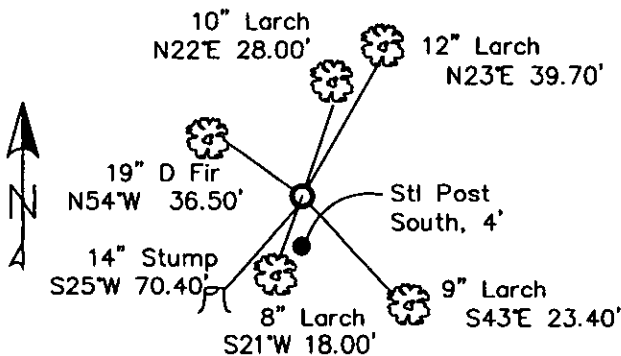
A Carsonite Post with boundary tag bears South, 4 ft. dist.

3. Established: A Western Larch, 8 ins. in diam., bears S21°W, 18.00 ft. dist., scribed T35NR25WS32BT, Placed aluminum nail in side-center.

Restacked and painted stones around monument. Repainted blazes and rings on all BTs.

Placed new BT tags and LSM signs on BTs. Placed steel post with LSM & Boundary tags, South, 4 ft. dist.

MAGNETIC DECLINATION - 16° EAST



SKETCH OF CORNER

CERTIFICATION

I, CURT HECKROTH

certify the information shown herein is true and correct.

Curt Heckroth
Signature of Ground Party Chief

LAWRENCE A. GLAHE

certify that the Corner Recordation work performed by me or under my direction in compliance with the "Corner Recordation Act" (Mont. Code Annotated, 82-1-101, et seq.)

Lawrence A. Glahe
Signature of Registered Surveyor

9748 LS

DATE: 11-12-10

EMPLOYER: GLAHE & ASSOC., INC.

Office of Clerk and Recorder, County of Lincoln. This "corner

record" was filed for record:

229625 BOOK: CCR CC&R'S PAGE: 11610 Pages: 1

was noted on the cross-inc

STATE OF MONTANA LINCOLN COUNTY

RECORDED: 11/15/2010 11:39 KOI: CC&R'S

book No. _____

TAMMY D. LAUER CLERK AND RECORDER

FEE: \$0.00

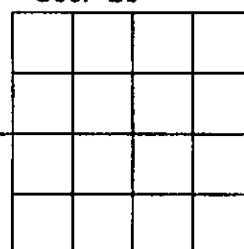
BY: *Tammy D. Lauer*

TO: GLAHE & ASSOC., INC. P.O. BOX 1863, SANDPOINT, ID. 83860

Cross Index No. V-9 T. 35N R. 25W PMM

Adopted July 1, 1981, Montana Board of Professional Engineers & Land Surveyors

Sec. 29



● corner this sheet

[illegible]

1. *Pharmaceuticals* (1997) 10: 115-121.
 2. *Pharmaceuticals* (1998) 11: 115-121.
 3. *Pharmaceuticals* (1999) 12: 115-121.
 4. *Pharmaceuticals* (2000) 13: 115-121.
 5. *Pharmaceuticals* (2001) 14: 115-121.
 6. *Pharmaceuticals* (2002) 15: 115-121.
 7. *Pharmaceuticals* (2003) 16: 115-121.
 8. *Pharmaceuticals* (2004) 17: 115-121.
 9. *Pharmaceuticals* (2005) 18: 115-121.
 10. *Pharmaceuticals* (2006) 19: 115-121.
 11. *Pharmaceuticals* (2007) 20: 115-121.
 12. *Pharmaceuticals* (2008) 21: 115-121.
 13. *Pharmaceuticals* (2009) 22: 115-121.
 14. *Pharmaceuticals* (2010) 23: 115-121.
 15. *Pharmaceuticals* (2011) 24: 115-121.
 16. *Pharmaceuticals* (2012) 25: 115-121.
 17. *Pharmaceuticals* (2013) 26: 115-121.
 18. *Pharmaceuticals* (2014) 27: 115-121.
 19. *Pharmaceuticals* (2015) 28: 115-121.
 20. *Pharmaceuticals* (2016) 29: 115-121.
 21. *Pharmaceuticals* (2017) 30: 115-121.
 22. *Pharmaceuticals* (2018) 31: 115-121.
 23. *Pharmaceuticals* (2019) 32: 115-121.
 24. *Pharmaceuticals* (2020) 33: 115-121.
 25. *Pharmaceuticals* (2021) 34: 115-121.
 26. *Pharmaceuticals* (2022) 35: 115-121.
 27. *Pharmaceuticals* (2023) 36: 115-121.
 28. *Pharmaceuticals* (2024) 37: 115-121.
 29. *Pharmaceuticals* (2025) 38: 115-121.
 30. *Pharmaceuticals* (2026) 39: 115-121.
 31. *Pharmaceuticals* (2027) 40: 115-121.
 32. *Pharmaceuticals* (2028) 41: 115-121.
 33. *Pharmaceuticals* (2029) 42: 115-121.
 34. *Pharmaceuticals* (2030) 43: 115-121.
 35. *Pharmaceuticals* (2031) 44: 115-121.
 36. *Pharmaceuticals* (2032) 45: 115-121.
 37. *Pharmaceuticals* (2033) 46: 115-121.
 38. *Pharmaceuticals* (2034) 47: 115-121.
 39. *Pharmaceuticals* (2035) 48: 115-121.
 40. *Pharmaceuticals* (2036) 49: 115-121.
 41. *Pharmaceuticals* (2037) 50: 115-121.
 42. *Pharmaceuticals* (2038) 51: 115-121.
 43. *Pharmaceuticals* (2039) 52: 115-121.
 44. *Pharmaceuticals* (2040) 53: 115-121.
 45. *Pharmaceuticals* (2041) 54: 115-121.
 46. *Pharmaceuticals* (2042) 55: 115-121.
 47. *Pharmaceuticals* (2043) 56: 115-121.
 48. *Pharmaceuticals* (2044) 57: 115-121.
 49. *Pharmaceuticals* (2045) 58: 115-121.
 50. *Pharmaceuticals* (2046) 59: 115-121.
 51. *Pharmaceuticals* (2047) 60: 115-121.
 52. *Pharmaceuticals* (2048) 61: 115-121.
 53. *Pharmaceuticals* (2049) 62: 115-121.
 54. *Pharmaceuticals* (2050) 63: 115-121.
 55. *Pharmaceuticals* (2051) 64: 115-121.
 56. *Pharmaceuticals* (2052) 65: 115-121.
 57. *Pharmaceuticals* (2053) 66: 115-121.
 58. *Pharmaceuticals* (2054) 67: 115-121.
 59. *Pharmaceuticals* (2055) 68: 115-121.
 60. *Pharmaceuticals* (2056) 69: 115-121.
 61. *Pharmaceuticals* (2057) 70: 115-121.
 62. *Pharmaceuticals* (2058) 71: 115-121.
 63. *Pharmaceuticals* (2059) 72: 115-121.
 64. *Pharmaceuticals* (2060) 73: 115-121.
 65. *Pharmaceuticals* (2061) 74: 115-121.
 66. *Pharmaceuticals* (2062) 75: 115-121.
 67. *Pharmaceuticals* (2063) 76: 115-121.
 68. *Pharmaceuticals* (2064) 77: 115-121.
 69. *Pharmaceuticals* (2065) 78: 115-121.
 70. *Pharmaceuticals* (2066) 79: 115-121.
 71. *Pharmaceuticals* (2067) 80: 115-121.
 72. *Pharmaceuticals* (2068) 81: 115-121.
 73. *Pharmaceuticals* (2069) 82: 115-121.
 74. *Pharmaceuticals* (2070) 83: 115-121.
 75. *Pharmaceuticals* (2071) 84: 115-121.
 76. *Pharmaceuticals* (2072) 85: 115-121.
 77. *Pharmaceuticals* (2073) 86: 115-121.
 78. *Pharmaceuticals* (2074) 87: 115-121.
 79. *Pharmaceuticals* (2075) 88: 115-121.
 80. *Pharmaceuticals* (2076) 89: 115-121.
 81. *Pharmaceuticals* (2077) 90: 115-121.
 82. *Pharmaceuticals* (2078) 91: 115-121.
 83. *Pharmaceuticals* (2079) 92: 115-121.
 84. *Pharmaceuticals* (2080) 93: 115-121.
 85. *Pharmaceuticals* (2081) 94: 115-121.
 86. *Pharmaceuticals* (2082) 95: 115-121.
 87. *Pharmaceuticals* (2083) 96: 115-121.
 88. *Pharmaceuticals* (2084) 97: 115-121.
 89. *Pharmaceuticals* (2085) 98: 115-121.
 90. *Pharmaceuticals* (2086) 99: 115-121.
 91. *Pharmaceuticals* (2087) 100: 115-121.
 92. *Pharmaceuticals* (2088) 101: 115-121.
 93. *Pharmaceuticals* (2089) 102: 115-121.
 94. *Pharmaceuticals* (2090) 103: 115-121.
 95. *Pharmaceuticals* (2091) 104: 115-121.
 96. *Pharmaceuticals* (2092) 105: 115-121.
 97. *Pharmaceuticals* (2093) 106: 115-121.
 98. *Pharmaceuticals* (2094) 107: 115-121.
 99. *Pharmaceuticals* (2095) 108: 115-121.
 100. *Pharmaceuticals* (2096) 109: 115-121.
 101. *Pharmaceuticals* (2097) 110: 115-121.
 102. *Pharmaceuticals* (2098) 111: 115-121.
 103. *Pharmaceuticals* (2099) 112: 115-121.
 104. *Pharmaceuticals* (2100) 113: 115-121.
 105. *Pharmaceuticals* (2101) 114: 115-121.
 106. *Pharmaceuticals* (2102) 115: 115-121.
 107. *Pharmaceuticals* (2103) 116: 115-121.
 108. *Pharmaceuticals* (2104) 117: 115-121.
 109. *Pharmaceuticals* (2105) 118: 115-121.
 110. *Pharmaceuticals* (2106) 119: 115-121.