

# CERTIFIED CORNER RECORDATION

Corner E 1/4 Cor S29 T. 35N R. 25W P.M.M. Lincoln County

## 1. Original GLO Notes:

Set:

A Sandstone, 12x8x6 ins. in the ground for 1/4 sec. cor. mkd. 1/4 on W face;

From which:

A Tamarack, 10 ins. in diam., bears S21°45'W, 14 lks. dist., mkd. 1/4 S BT;

A Tamarack, 10 ins. in diam., bears N72°E, 13 lks. dist., mkd. 1/4 S BT.

## BLM Record:

Found:

Original stone as described by the GLO, at the corner point.

From which:

A Larch, 12 ins. in diam., bears N70°E, 13 lks. dist., mkd. 1/4 S BT;

A Larch, 16 ins. in diam., bears S21 3/4°W, 14 lks. dist., visible marks 1/4 S.

Set:

An Iron Post, 30 ins. long, 2 1/2 ins. diam., 26 ins. in the ground, in concrete with

A Brass Cap mkd as shown:

A Larch, 8 ins. in diam., bears N57 1/2°E, 37 lks. dist., mkd. 1/4 S 29 BT;

A Fir, 10 ins. in diam., bears N39 1/2°W, 47 lks. dist., mkd. 1/4 S 28 BT;

## 1982 James H. Burton:

Found:

A BLM Brass Cap Monument as described above,

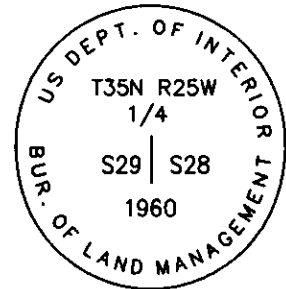
From which:

A Larch, 9 ins. in diam., bears N37°E, 37.3 ft. dist., with scar;

A Larch, 13 ins. in diam., bears N72°E, 8.5 ft. dist., with scar;

A Larch, 16 ins. in diam., bears S19°W, 9.1 ft. dist., with scar;

A Fir, 12 ins. in diam., bears N42°W, 31.3 ft. dist., with scar.



## 2. Found:

A BLM Brass Monument with 3 1/4 ins. cap, flush with ground, mkd. as shown;

A Western Larch, 9 ins. in diam., bears N37°E, 37.30 ft. dist., healed face;

A Western Larch, dead snag, 13 ins. in diam., bears N72°E, 8.50 ft. dist., healed face;

A Western Larch stump, 18 ins. in diam., bears S19°W, 9.10 ft. dist.;

A Douglas Fir, 14 ins. in diam., bears N42°W, 31.30 ft. dist., healed face;

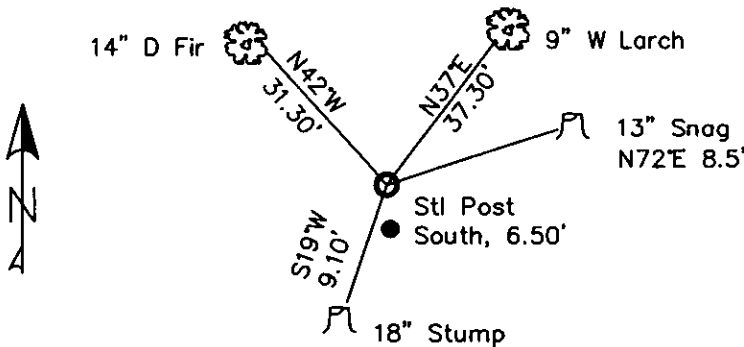
A Carsonite Post with boundary tage, bears South, 6.50 ft. dist.

## 3. Stacked and painted a mound of stones around monument;

Repainted blazes and rings on all BTs; placed LSM signs on back of BTs;

Placed Steel Post with LSM & Boundary tags in front of carsonite post, South, 6.50 ft. dist..

MAGNETIC DECLINATION - 16° EAST



SKETCH OF CORNER

CERTIFICATION

I, CURT HECKROTH  
certify the information shown herein is true and correct.

*Curt Heckroth*  
Signature of Ground Party Clerk

I, LAWRENCE A. GLAHE  
certify that this Corner Recordation was performed by me or under my supervision in compliance with the "Corner Recordation Act" (Pub. Law 92-401, et seq. (U.S.C.A.))

*L. Glahe*  
Signature of Registered Professional Engineer and Land Surveyor

Date: 11-10-10 9748 LS

Employer: GLAHE & ASSOC., INC.

Office of Clerk and Recorder, County of Lincoln. This "corner

record" was filed for record r 229624 BOOK: CCR CC&R'S PAGE: 11609 Pages: 1

was noted on the cross-index STATE OF MONTANA LINCOLN COUNTY

book No. RECORDED: 11/15/2010 11:38 KOI: CC&R'S

TAMMY D. LAUER CLERK AND RECORDER

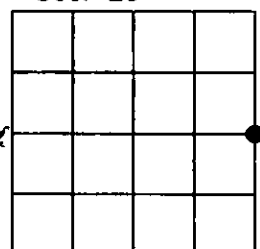
FEE: \$0.00 BY *Tammy D. Lauer*

TO: GLAHE & ASSOC., INC. P.O. BOX 1863, SANDPOINT, ID. 83860,

Cross Index No. T-9 T. 35N R. 25W PMM

Adopted July 1, 1981, Montana Board of Professional Engineers & Land Surveyors

Sec. 29



● corner this sheet

THE UNIVERSITY OF CHICAGO  
DIVISION OF THE PHYSICAL SCIENCES  
DEPARTMENT OF PHYSICS

REPORT OF THE  
COMMISSIONERS OF THE  
UNIVERSITY OF CHICAGO  
FOR THE YEAR 1900

CHICAGO  
PUBLISHED BY THE  
UNIVERSITY OF CHICAGO  
PRESS

CHICAGO  
PUBLISHED BY THE  
UNIVERSITY OF CHICAGO  
PRESS

CHICAGO  
PUBLISHED BY THE  
UNIVERSITY OF CHICAGO  
PRESS

CHICAGO  
PUBLISHED BY THE  
UNIVERSITY OF CHICAGO  
PRESS

CHICAGO  
PUBLISHED BY THE  
UNIVERSITY OF CHICAGO  
PRESS

CHICAGO  
PUBLISHED BY THE  
UNIVERSITY OF CHICAGO  
PRESS

CHICAGO  
PUBLISHED BY THE  
UNIVERSITY OF CHICAGO  
PRESS

CHICAGO  
PUBLISHED BY THE  
UNIVERSITY OF CHICAGO  
PRESS

CHICAGO  
PUBLISHED BY THE  
UNIVERSITY OF CHICAGO  
PRESS