

# CERTIFIED CORNER RECORDATION

Corner N 16th S29/S28 T. 35N R. 25W P.M.M. Lincoln County

## 1. Original GLO Notes:

This corner was never set.

1982 Michael L. Haiges:

Found:

An Iron Monument, with 2 ins. x 5½ ins. top for corner, as indicated on Certificate of Survey No. 101, records of Lincoln County, Mt. Monument falls N13°W, 5.01 ft. from found ¾ ins. iron pin.

Set:

An Alum. Monument, 2½ ins. x 30 ins. with ¾ ins. Cap, 24 ins. in the ground, with protective ring of stone.

From which:

A Larch, 11" ins. in diam. bears N14°E, 51.1 ft. dist., mkd. N 1/16 S28 BT;

A Larch, 6" ins. in diam. bears N66°W, 18.2 ft. dist., mkd. N 1/16 S29 BT.

## 2. Found:

A USDA Aluminum monument, with ¾ ins. diam. cap, 6 ins. out of ground surrounded by a mound of stone, mkd. as shown;

An Iron Monument with 2ins. X 5½ ins. top, bears N13°W, 5.01 ft. dist.;

A Western Larch, 13 ins. in diam., bears N14°E, 51.10 ft. dist., healed face;

A Western Larch, 8 ins. in diam., bears N66°W, 18.20 ft. healed face;

A Carsonite Post with boundary sign, bears South, 7.50 ft. dist.

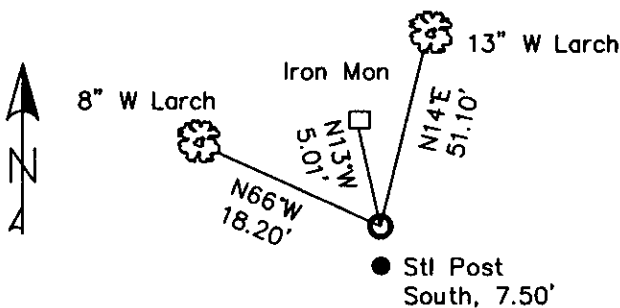
## 3. Restacked and painted stones around monument;

Repainted blazes and rings on all BTs; placed LSM signs on back of BTs;

Placed Steel Post with LSM & Boundary tags in front of carsonite post, South, 7.50 ft. dist.



MAGNETIC DECLINATION - 16° EAST



SKETCH OF CORNER

## CERTIFICATION

I, CURT HECKROTH

certify the information shown here is true and correct.

Signature of Ground Party

Signature of Ground Party

I, LAWRENCE A. GLAHE

certify that this Corner Recordation represents work performed by me or under my supervision in compliance with the "Corner Recordation Act" (MCA 2-2-101, et seq. M.C.A.)

Signature of Surveyor

Signature of Surveyor

Date: 11-10-10

Employer: GLAHE & ASSOC., INC.

Employer: GLAHE & ASSOC., INC.

Office of Clerk and Recorder, County of Lincoln. This "corner

record" was filed for record 229623 BOOK: CCR CC&R'S PAGE: 11608 Pages: 1

was noted on the cross-in RECORDED: 11/15/2010 11:37 KOI: CC&R'S

book No.                      TAMMY D. LAUER CLERK AND RECORDER

FEE: \$0.00

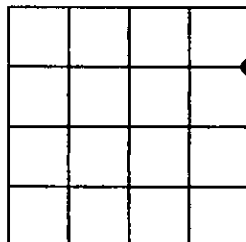
BY:                     

TO: GLAHE & ASSOC., INC. P.O. BOX 1863, SANDPOINT, ID. 83860,

Cross Index No. S-9 T. 35N R. 25W PMM

Adopted July 1, 1981, Montana Board of Professional Engineers & Land Surveyors

Sec. 29



● corner this sheet

