

CERTIFIED CORNER RECORDATION

Corner C-W-NE 1/64 S29 T. 35N R. 25W P.M.M. Lincoln County

1. Original GLO Notes:

This corner was never set.

1982 Michael L. Haiges:

Set:

An Aluminum Monument, 2½ ins. x 30 ins. with a ¾ ins. cap, 24 ins. in the ground, with protective ring of stone.

From which:

A Larch, 6" ins. in diam. bears S86°W, 14.0 ft. dist., mkd. CWNE 1/64 BT;

A Larch, 7" ins. in diam. bears N02°W, 19.1 ft. dist., mkd. CWNE 1/64 BT.

2. Found:

A Aluminum Monument, ¾ ins. in diam. cap, 4 ins. out of ground surrounded by a mound of stone, mkd. as shown;

A Western Larch, 7 ins. in diam., bears S86°W, 14.00 ft. dist., healed face;

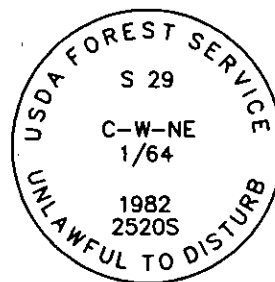
A Western Larch, 9 ins. in diam., bears N2°W, 19.10 ft. dist., healed face;

A Carsonite Post with Boundary sign, bears South, 7.50 ft. dist.

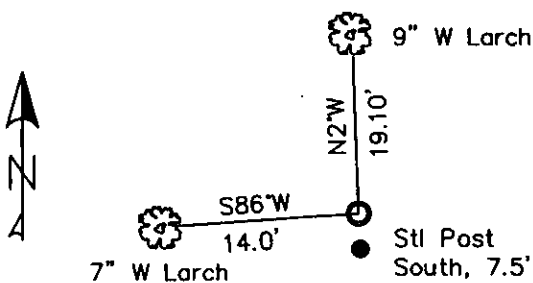
3. Restacked and painted stones around monument;

Repainted blazes and rings on all BTs; placed LSM signs on back of BTs;

Placed Steel Post with LSM & Boundary tags in front of carsonite post, South, 7.50 ft. dist.



MAGNETIC DECLINATION - 16° EAST



SKETCH OF CORNER

CERTIFICATION

I, CURT HECKROTH
 certify the information shown herein is true and correct.

Curt Heckroth
 Signature Ground Party

I, LAWRENCE A. GLAHE
 certify that the Corner Record Book represents work performed by me or under my direction in compliance with the "Corner Recordation Act" (78-221-01, et seq. M.C.A.)

9748 LS
 Signature Registered Professional Engineer or Land Surveyor

Date: 11/10/10 9748 LS

Employer: GLAHE & ASSOC., INC.

Office of Clerk and Recorder, County of Lincoln This "corner

record" was filed for reco 229622 BOOK: CCR CC&R'S PAGE: 11607 Pages: 1

was noted on the cross-i RECORDED: 11/15/2010 11:36 KOI: CC&R'S

book No. TAMMY D. LAUER CLERK AND RECORDER

FEE: \$0.00

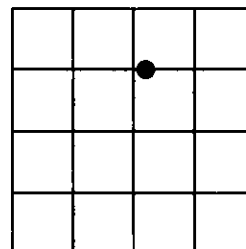
BY: Deanne D. Brown

TO: GLAHE & ASSOC., INC. P.O. BOX 1863, SANDPOINT, ID. 83860,

Cross Index No. S-7¼ T. 35N R. 25W PMM

Adopted July 1, 1981, Montana Board of Professional Engineers & Land Surveyors

Sec. 29



● corner this sheet

