

CERTIFIED CORNER RECORDATION

Corner C-W-E 1/64 S29 T. 35N R. 25W P.M.M. Lincoln County

1. Original GLO Notes:

This corner was never set.

1982 Michael L. Haiges:

Found:

Reference Monuments as indicated on Certificate of Survey No. 65½, records of Lincoln County, Mt.

Set:

An Aluminum Monument, 2½ ins. x 30 ins. with a ¾ ins. cap, 24 ins. in the ground, with protective ring of stone. This corner falls in a small pond. Monuments were set North and South of corner point as Witness Corners;

North Witness Corner:

A Fir, 7 ins. in diam., bears N14°W, 136.1 ft. dist., mkd. X CWE 1/64 BT;

A Larch, 11 ins. in diam., bears S87°W, 133.4 ft. dist., mkd. X CWE 1/64 BT.

South Witness Corner:

A Spruce, 12" ins. in diam. bears S35°W, 97.4 ft. dist., mkd. X CWE 1/64 BT;

A Spruce, 13" ins. in diam. bears N55°W, 40.4 ft. dist., mkd. X CWE 1/64 BT.

2. Found:

USDA Aluminum monuments, 6 ins. out of ground surrounded by mounds of stone, mkd. as shown;

South Mon:

A Spruce, 15 ins. in diam., bears S35°W, 97.40 ft. dist., healed face;

A Spruce, 19 ins. in diam., bears N55°W, 40.40 ft. dist., healed face;

North Mon:

A Western Larch dead snag, 10 ins. in diam., bears S87°W, 133.40 ft. dist., X at chest high, open face CWE 1/64 BT visible;

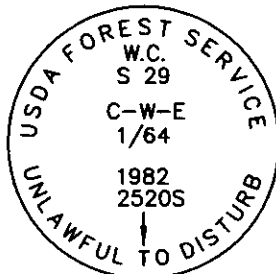
A Douglas Fir, 10 ins. in diam., bears N14°W, 136.10 ft. dist., healed face.

3. Established:

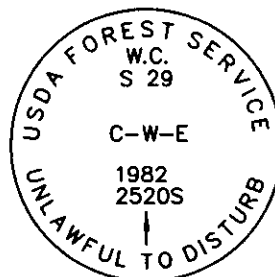
A Spruce, 12 ins. in diam., bears N74°W, 61.30 ft. dist. from North Monument, scribed "X BT", Placed aluminum nail in side center;

Restacked and painted stones around monument; Repainted blazes and rings on all BTs; placed LSM signs on back of BTs; Placed Steel Posts with LSM & Boundary tags, North, 2 ft. dist. from each monument.

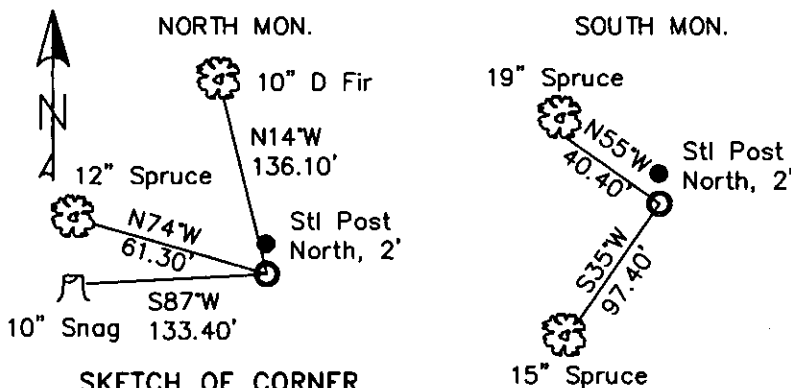
NORTH MON.



SOUTH MON.



MAGNETIC DECLINATION - 16° EAST



SKETCH OF CORNER

CERTIFICATION

I, CURT HECKROTH  
certify the information shown hereon is true and correct.

*Curt Heckroth*  
Signature Ground Party, etc.

I, LAWRENCE A. GLAHE  
certify that this Corner Recordation was performed by me or under my direction in compliance with the "Corner Recordation Act" (Pub. Law 92-101, et seq. U.S.A.)

*Lawrence A. Glahe*  
Signature Registered Professional Engineer

Dated: 11-10-10 9748 LS

Employer: GLAHE & ASSOC., INC.

Office of Clerk and Recorder, County of Lincoln. This "corner

record" was filed for record on

229621 BOOK: CCR CC&R'S PAGE: 11606 Pages: 1

was noted on the cross-index

STATE OF MONTANA LINCOLN COUNTY

book No. \_\_\_\_\_

RECORDED: 11/15/2010 11:35 - KOI: CC&R'S

TAMMY D. LAUER CLERK AND RECORDER

FEE: \$0.00

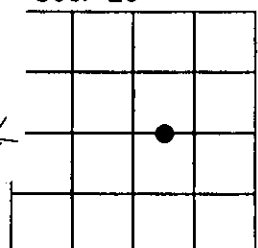
BY: *Lawrence A. Glahe*

TO: GLAHE & ASSOC., INC. P.O. BOX 1863, SANDPOINT, ID. 83860

Cross Index No. T-7.5 T. 35N R. 25W PMM

Adopted July 1, 1981, Montana Board of Professional Engineers & Land Surveyors

Sec. 29



● corner this sheet

[illegible]

100

3-10-1964

the 1990s, the number of people in the world who are under 15 years of age is expected to increase by 1.5 billion, from 1.1 billion in 1990 to 2.6 billion in 2015. The number of people aged 65 and over is expected to increase by 1 billion, from 350 million in 1990 to 1.4 billion in 2015. The number of people aged 15-64 is expected to increase by 1.5 billion, from 1.1 billion in 1990 to 2.6 billion in 2015. The number of people aged 65 and over is expected to increase by 1 billion, from 350 million in 1990 to 1.4 billion in 2015. The number of people aged 15-64 is expected to increase by 1.5 billion, from 1.1 billion in 1990 to 2.6 billion in 2015.