

CERTIFIED CORNER RECORDATION

Corner C-W-SE 1/64 S29 T. 35N R. 25W P.M.M. Lincoln County

1. Original GLO Notes:

This corner was never set.

1982 Michael L. Haiges:

Found:

A Rebar, 5/8 ins. in diam., with plastic cap mkd. HAIGES 2320S as indicated on Certificate of Survey No. 65½, records of Lincoln County, Mt.

Set:

An Aluminum Monument, 2½ ins. x 30 ins. with a ¾ ins. cap, 24 ins. in the ground, with protective ring of stone;

From which:

A Larch, 6 ins. in diam., bears N12°E, 42.3 ft. dist., mkd. CWSE 1/64 BT;

A Larch, 7 ins. in diam., bears N70°W, 42.4 ft. dist., mkd. CWSE 1/64 BT.

2. Found:

A USDA Aluminum monument, ¾ ins. diam. cap, 6 ins. out of ground surrounded by a mound of stone;

A Western Larch, 10 ins. in diam., bears N12°E, 42.30 ft. dist., healed face;

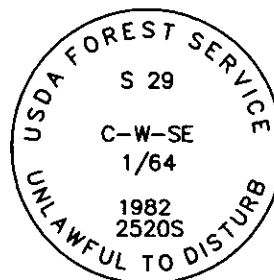
A Western Larch, 11 ins. in diam., bears N70°W, 42.40 ft. dist., healed face;

3. Restacked and painted stones around monument;

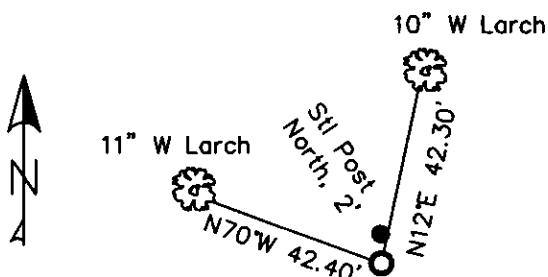
Repainted blazes and rings on all BTs; placed LSM signs on back of BTs;

Placed new BT tag on N70°W BT;

Placed Steel Post with LSM & Boundary tags, North, 2 ft. dist.



MAGNETIC DECLINATION - 16° EAST



SKETCH OF CORNER

CERTIFICATION

I, CURT HECKROTH

certify the information shown herein is true and correct.

Curt Heckroth
Signature Ground Party, etc.

I, LAWRENCE A. GLAHE

certify that the Corner Recordation represents work performed by me or under my direction in compliance with the "Corner Recordation Act" (MCA 12-1-101, et seq. M.C.A.)

Lawrence A. Glahe
9748 LS

REGISTERED LAND SURVEYOR

Date: 11-15-2010 9748 LS

Employer: GLAHE & ASSOC., INC.

Office of Clerk and Recorder, County of Lincoln. This "corner

record" was filed for record 229620 BOOK: CCR CC&R'S PAGE: 11605 Pages: 1

was noted on the cross-in STATE OF MONTANA LINCOLN COUNTY RECORDED: 11/15/2010 11:34 KOI: CC&R'S

book No. TAMMY D. LAUER CLERK AND RECORDER

FEE: \$0.00

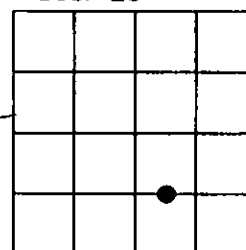
BY: *Tammy D. Lauer*

TO: GLAHE & ASSOC., INC. P.O. BOX 1863, SANDPOINT, ID. 83860.

Cross Index No. U-7.5 T. 35N R. 25W PMM

Adopted July 1, 1981, Montana Board of Professional Engineers & Land Surveyors

Sec. 29



● corner this sheet

[illegible]

the 1990s, the number of people in the world who are under 15 years of age is expected to increase by 1.5 billion, from 1.1 billion in 1990 to 2.6 billion in 2015. The number of people aged 65 and over is expected to increase by 1.1 billion, from 350 million in 1990 to 1.4 billion in 2015. The number of people aged 15-64 is expected to increase by 1.5 billion, from 2.5 billion in 1990 to 4.0 billion in 2015. The number of people aged 65 and over is expected to increase by 1.1 billion, from 350 million in 1990 to 1.4 billion in 2015. The number of people aged 15-64 is expected to increase by 1.5 billion, from 2.5 billion in 1990 to 4.0 billion in 2015.

Journal of Management Studies, 19(1), 67-80.

Journal of Management Education 30(6)

Journal of Management Studies, 19(1), 67-80.

1	2	3	4	5	6	7	8	9	10	11	12	13	14	15	16	17	18	19	20	21	22	23	24	25	26	27	28	29	30	31	32	33	34	35	36	37	38	39	40	41	42	43	44	45	46	47	48	49	50	51	52	53	54	55	56	57	58	59	60	61	62	63	64	65	66	67	68	69	70	71	72	73	74	75	76	77	78	79	80	81	82	83	84	85	86	87	88	89	90	91	92	93	94	95	96	97	98	99	100
---	---	---	---	---	---	---	---	---	----	----	----	----	----	----	----	----	----	----	----	----	----	----	----	----	----	----	----	----	----	----	----	----	----	----	----	----	----	----	----	----	----	----	----	----	----	----	----	----	----	----	----	----	----	----	----	----	----	----	----	----	----	----	----	----	----	----	----	----	----	----	----	----	----	----	----	----	----	----	----	----	----	----	----	----	----	----	----	----	----	----	----	----	----	----	----	----	----	----	-----

1. *Chlorophyll a* and *Chlorophyll b* were determined by the method of Lichtenthaler and Whistler (1973).