

CERTIFIED CORNER RECORDATION

Corner CW 1/16 S29 T. 35N R. 25W P.M.M. Lincoln County

1. Original GLO Notes:

This corner was never set.

1982 Michael L. Haiges:

Set:

An Alum. Monument with Cap, 3¼ ins. in diam., 2½ ins. in diam., 30 ins. long; 24 ins. in the ground with protective ring of stone.

A Larch, 14 ins. in diam., bears N40°E, 53.2 ft. dist., mkd. CW 1/16 BT;

A Larch, 10 ins. in diam., bears N58°W, 23.0 ft. dist., mkd. CW 1/16 BT.

2. Found:

A USDA Aluminum monument, with 3¼ ins. diam. cap, 4 ins. out of ground surrounded by a mound of stone, mkd. as shown;

A Western Larch, 17 ins. in diam., bears N40°E, 53.20 ft. dist., healed face;

A Stump, 11 ins. in diam., bears N58°W, 23.00 ft. dist., open face, BT visible;

A Carsonite Post with Boundary tag, bears North, 6 ft. dist.

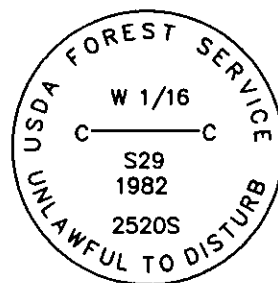
3. Established:

A Western Larch, 8 ins. in diam, bears S2°W, 30.20 ft. dist., scribed "CW 1/16 S29 BT", placed alum. nail in side center.

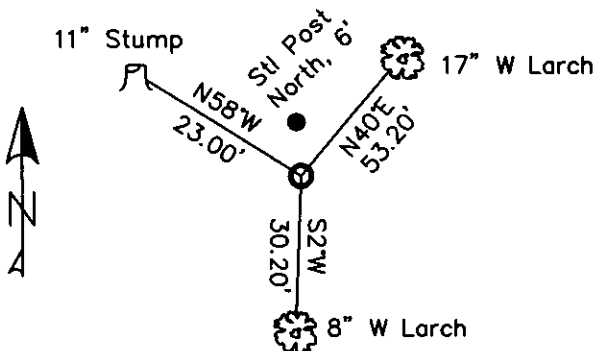
Restacked and painted stones around monument;

Repainted blazes and rings on all BTs; placed LSM & Boundary sign on live BT, N40°E;

Placed Steel Post with LSM & Boundary tags in front of carsonite post, North, 6 ft. dist.



MAGNETIC DECLINATION - 16° EAST



SKETCH OF CORNER

CERTIFICATION

I, CURT HECKROTH
 certify the information shown herein is true and correct.

Lawrence A. Glahe
 Signature Ground Party

I, LAWRENCE A. GLAHE
 certify that the Corner Recordation was performed by me or under my direct supervision in compliance with the "Corner Recordation Act" (P.L. 86-401, et seq. U.S.C.A.)

9748 LS

11-10-10 Date

GLAHE & ASSOC., INC. Employer

9748 LS

Office of Clerk and Recorder, County of Lincoln. This "corner

record" was filed for record on 229617 BOOK: CCR CC&R'S PAGE: 11602 Pages: 1 Sec. 29

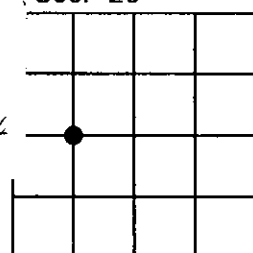
was noted on the cross-index STATE OF MONTANA LINCOLN COUNTY

book No. TAMMY D. LAUER CLERK AND RECORDER

FEE: \$0.00 BY: Glennie Deaton
 TO: GLAHE & ASSOC., INC. P.O. BOX 1863, SANDPOINT, ID. 83860

Cross Index No. T-6 T. 35N R. 25W PMM

Adopted July 1, 1981, Montana Board of Professional Engineers & Land Surveyors



● corner this sheet

the 1990s, the number of people in the world who are under 15 years of age is expected to increase from 1.1 billion to 1.5 billion. The number of people aged 65 and over is expected to increase from 250 million to 450 million. The number of people aged 15 and over is expected to increase from 3.5 billion to 4.5 billion. The number of people aged 15 and over is expected to increase from 3.5 billion to 4.5 billion. The number of people aged 15 and over is expected to increase from 3.5 billion to 4.5 billion.

[illegible]

the 1990s, the number of people in the world who are undernourished has declined from 1.1 billion to 800 million. The number of people who are malnourished has declined from 1.5 billion to 1 billion. The number of people who are obese has increased from 100 million to 300 million. The number of people who are overweight has increased from 100 million to 300 million. The number of people who are obese and overweight has increased from 100 million to 300 million. The number of people who are obese and overweight has increased from 100 million to 300 million.

[illegible]