

# CERTIFIED CORNER RECORDATION

Corner C-S-NW- 1/64 S29 T. 35N R. 25W P.M.M. Lincoln County

## 1. Original GLO Notes:

This corner was never set.

1982 Michael L. Haiges:

### Set:

An Alum. Monument with Cap, 3¼ ins. in diam., 2½ ins. in diam., 30 ins. long; 24 ins. in the ground with protective ring of stone.

A Larch, 9 ins. in diam., bears S78°E, 57.0 ft. dist., mkd. CSNW 1/64 BT;

A Larch, 8 ins. in diam., bears S07°E, 55.1 ft. dist., mkd. CSNW 1/64 BT.

## 2. Found:

A Aluminum Monument with 3¼ ins. cap, 6 ins. out of ground surrounded by a mound of stone, mkd. as shown;

A Western Larch, 12 ins. in diam., bears S78°E, 57.00 ft. dist., healed face;

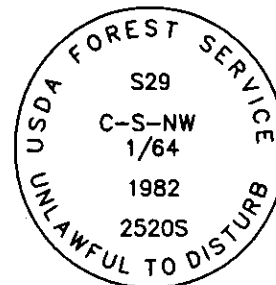
A Western Larch, 10 ins. in diam., bears S7°E, 55.10 ft. dist., healed face;

A Carsonite post with boundary tag, bears East, 7 ft. dist.

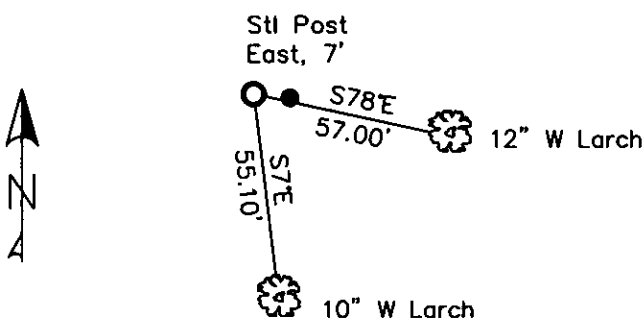
## 3. Restacked and painted stones around monument;

Painted blazes and rings on all BTs; placed LSM & Boundary signs on back of BTs;

Placed Steel Post with LSM & Boundary tags in front of carsonite post, East, 7 ft. dist.



MAGNETIC DECLINATION - 16° EAST



## SKETCH OF CORNER

CERTIFICATION

I, CURT HECKROTH  
 certify the information shown here is true and correct.  
 Signature Ground Party

I, LAWRENCE A. GLAHE  
 certify that the Corner Recordation Service represents work performed by me or under my supervision in compliance with the "Corner Recordation Act" (Pub. Law 92-101, et seq. H.R.A.)  
 9748 LS  
 Registered Professional Engineer and Surveyor  
 Date: 11-10-10  
 Employer: GLAHE & ASSOC., INC.

Office of Clerk and Recorder, County of Lincoln. This "corner

record" was filed for record 229616 BOOK: CCR CC&R'S PAGE: 11601 Pages: 1

was noted on the cross-in STATE OF MONTANA LINCOLN COUNTY

book No. RECORDED: 11/15/2010 11:27 KOI: CC&R'S

TAMMY D. LAUER CLERK AND RECORDER

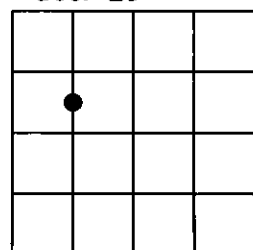
FEE: \$0.00 BY: Lawrence Glahe Deputy

TO: GLAHE & ASSOC., INC. P.O. BOX 1863, SANDPOINT, ID. 83860,

Cross Index No. S-T-6 T. 35N R. 25W PMM

Adopted July 1, 1981, Montana Board of Professional Engineers & Land Surveyors

Sec. 29



● corner this sheet

THE UNIVERSITY OF CHICAGO

DEPARTMENT OF THE HISTORY OF ARTS AND ARCHITECTURE

THE UNIVERSITY OF CHICAGO PRESS

CHICAGO, ILLINOIS

THE UNIVERSITY OF CHICAGO PRESS

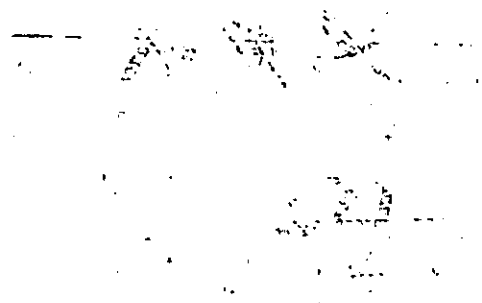
CHICAGO, ILLINOIS

THE UNIVERSITY OF CHICAGO PRESS

CHICAGO, ILLINOIS

CHICAGO, ILLINOIS

CHICAGO, ILLINOIS



CHICAGO, ILLINOIS

CHICAGO, ILLINOIS

CHICAGO, ILLINOIS

CHICAGO, ILLINOIS

CHICAGO, ILLINOIS