

# CERTIFIED CORNER RECORDATION

Corner SE NW 1/64 S29 T. 35N R. 25W P.M.M. Lincoln County

## 1. Original GLO Notes:

This corner was never set.

1982 Michael L. Haiges:

Set:

An Alum. Monument with Cap, 3¼ ins. in diam., 2½ ins. in diam., 30 ins. long; 24 ins. in the ground with protective ring of stone.

A Larch, 8 ins. in diam., bears S32°E, 14.5 ft. dist., mkd. SENW 1/64 BT;

A Larch, 7 ins. in diam., bears S81°W, 28.9 ft. dist., mkd. SENW 1/64 BT.

## 2. Found:

A USDA Alum. Monument, 3¼ ins. cap, 6 ins. out of ground surrounded by a mound of stone, mkd. as shown;

A Western Larch, 9 ins. in diam., bears S32°E, 14.50 ft. dist., healed face;

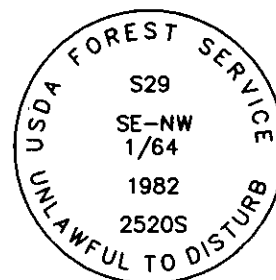
A Western Larch, 7 ins. in diam., bears S81°W, 28.90 ft. dist., partially healed face, NW 1/64 BT visible;

A Carsonite Post with boundary sign bears West, 7.40 ft. dist.

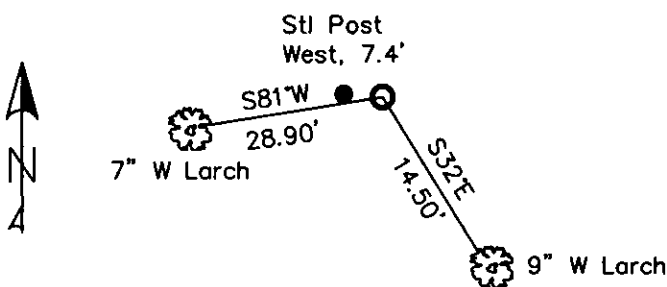
## 3. Restacked and painted stones around monument;

Repainted blazes and rings on all BTs; Placed LSM signs on back of all BTs;

Placed Steel Post with LSM & Boundary tags in front of Carsonite Post, West, 7.40 ft. dist.



MAGNETIC DECLINATION - 16° EAST



SKETCH OF CORNER

## CERTIFICATION

I, CURT HECKROTH

certify the information shown herein is true and correct.

*Curt Heckroth*  
Signature of Ground Party

I, LAWRENCE A. GLAHE

certify that the Corner Recordation was performed by me or under my direction in compliance with the "Corner Recordation Act" (Mont. Code Annotated, Title 82, Chapter 101, et seq.)

*Lawrence A. Glahe*  
9748 LS  
REGISTERED LAND SURVEYOR

Date: 11-10-10 Employer: GLAHE & ASSOC., INC.

Office of Clerk and Recorder, County of Lincoln. This "corner

record" was filed for record

was noted on the cross-ind

book No. \_\_\_\_\_

229615 BOOK: CCR CC&R'S PAGE: 11600 Pages: 1

STATE OF MONTANA LINCOLN COUNTY

RECORDED: 11/15/2010 11:26 KOI: CC&R'S

TAMMY D. LAUER CLERK AND RECORDER

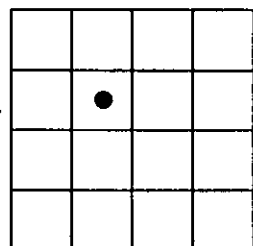
FEE: \$0.00

TO: GLAHE & ASSOC., INC. P.O. BOX 1863, SANDPOINT, ID. 83860,

Cross Index No. S-T-6.5 T. 35N R. 25W PMM

Adopted July 1, 1981, Montana Board of Professional Engineers & Land Surveyors

Sec. 29



● corner this sheet

THE NEW YORK PUBLIC LIBRARY  
ASTOR LENOX TILDEN FOUNDATION

1215 100th St. Astoria, Ore.  
March 10, 1914

Dear Sir:  
I have the honor to acknowledge  
the receipt of your letter of  
the 2nd inst.

and in reply to inform you that  
the same has been forwarded to  
the proper authorities for their  
consideration.

Very respectfully,  
J. H. [Signature]

Yours very truly,  
J. H. [Signature]

Enclosed

Very truly,  
J. H. [Signature]