

CERTIFIED CORNER RECORDATION

Corner N¼ S29 T. 35N R. 25W P.M.M. Lincoln County

1. Original GLO Notes:

Set a limestone, 14x8x6 ins. 10 ins. in the ground for ¼ Sec. Cor., mkd. ¼ on N. face, from which
An Alder, 4 ins. in diam., bears N54°30' W, 18 lks. dist., marked ¼ S B T;
A Tamarack, 38 ins. in diam., bears S11°30'W, 8 lks. dist., marked ¼ S B T;

BLM Record:

Found:

A Stone, described by the GLO, at the corner point.

Set:

A Brass Cap on an Iron Post, 30 ins. long, 2½ ins. diam., 26 ins. in the ground., mkd. as shown.

A Larch, 28 ins. in diam., bears S11½°W, 8 lks. dist., mkd. ¼ S BT;

Established:

A Larch, 5 ins. in diam., bears N34½°W, 29 lks. dist., mkd. BT.

1980 Thomas C. Hill:

Found:

A Brass Cap, 2½ ins. diam., 3 ins. above ground, mkd as shown. Mound of stone app. 1 ft. NW of corner.

A Larch, 6 ins. in diam., bears N35°W, 19.8 ft. dist., healed face, alive and well.

A Larch, 30 ins. in diam., bears S11°W, 6.7 ft., scribing visible, alive and well.

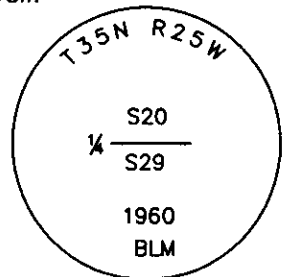
1982 James H. Burton:

Found:

A BLM Brass Cap monument;

A Larch, 28 ins. in diam., bears S11°W, 6.8 ft. dist., with scribing;

A Larch, 7 ins. in diam., bears N35°W, 19.6 ft. dist., with scribing.



2. Found:

A BLM Brass Monument, 3¼ ins. in diam., 4 ins. out of ground, mkd. as shown;

A Western Larch snag, 31 ins. in diam., bears S11°W, 6.80 ft. dist. to side center open face, BT visible;

A Western Larch, 11 ins. in diam., bears N35°W, 19.60 ft. dist. to side-center healed face;

E-W Fence line bears South, 1 ft. dist;

A Carsonite Post with boundary tag bears West, 2 ft. dist. of corner.

3. Established:

A Western Larch, 7 ins. in diam., bears S52°E, 9.00 ft. dist. scribed "¼ S29 BT".

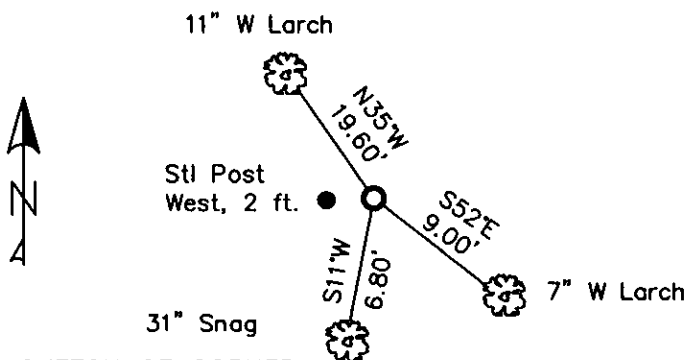
Placed aluminum nail in side center.

Stacked and painted a mound of stones around monument;

Repainted blazes and rings on all BTs; Placed BT tags and LSM signs on all BTs;

Placed Steel Post with LSM & Boundary tags in front of carsonite post, West, 2 ft. dist.

MAGNETIC DECLINATION - 16° EAST



SKETCH OF CORNER

CERTIFICATION

I, CURT HECKROTH
certify the information shown herein is true and correct.

Curt Heckroth
Signature Ground Party

I, LAWRENCE A. GLAHE
certify that this Corner Recordation represents work performed by me or under my direct supervision in compliance with the "Corner Recordation Act" (MCA 82-101, et seq. M.C.A.)

Lawrence A. Glahe
Signature Surveyor

Date: 11-10-10 9748 LS
Employer: GLAHE & ASSOC., INC.

Office of Clerk and Recorder, County of Lincoln. This "corner

record" was filed for record c 229612 BOOK: CCR CC&R'S PAGE: 11597 Pages: 1

was noted on the cross-index STATE OF MONTANA LINCOLN COUNTY

book No. RECORDED: 11/15/2010 11:24 KOI: CC&R'S

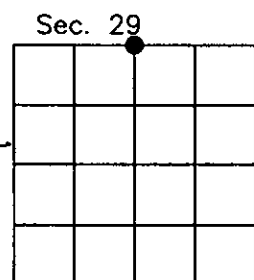
TAMMY D. LAUER CLERK AND RECORDER

BY: *Tammy D. Lauer* Deputy
FEE: \$0.00

TO: GLAHE & ASSOC., INC. P.O. BOX 1863, SANDPOINT, ID. 83860,

Cross Index No. R-7 T. 35N R. 25W PMM

Adopted July 1, 1981, Montana Board of Professional Engineers & Land Surveyors



● corner this sheet

Journal of Management Education 30(6)p.789-804
© The Author(s) 2006. Reprints and permissions:
<http://www.sagepub.com/journalsPermissions.nav>

[illegible]

100

—

.....

44-38861-100

1997, 1998, 1999, 2000, 2001, 2002, 2003, 2004, 2005, 2006, 2007, 2008, 2009, 2010, 2011, 2012, 2013, 2014, 2015, 2016, 2017, 2018, 2019, 2020, 2021, 2022, 2023, 2024, 2025, 2026, 2027, 2028, 2029, 2030, 2031, 2032, 2033, 2034, 2035, 2036, 2037, 2038, 2039, 2040, 2041, 2042, 2043, 2044, 2045, 2046, 2047, 2048, 2049, 2050, 2051, 2052, 2053, 2054, 2055, 2056, 2057, 2058, 2059, 2060, 2061, 2062, 2063, 2064, 2065, 2066, 2067, 2068, 2069, 2070, 2071, 2072, 2073, 2074, 2075, 2076, 2077, 2078, 2079, 2080, 2081, 2082, 2083, 2084, 2085, 2086, 2087, 2088, 2089, 2090, 2091, 2092, 2093, 2094, 2095, 2096, 2097, 2098, 2099, 2100, 2101, 2102, 2103, 2104, 2105, 2106, 2107, 2108, 2109, 2110, 2111, 2112, 2113, 2114, 2115, 2116, 2117, 2118, 2119, 2120, 2121, 2122, 2123, 2124, 2125, 2126, 2127, 2128, 2129, 2130, 2131, 2132, 2133, 2134, 2135, 2136, 2137, 2138, 2139, 2140, 2141, 2142, 2143, 2144, 2145, 2146, 2147, 2148, 2149, 2150, 2151, 2152, 2153, 2154, 2155, 2156, 2157, 2158, 2159, 2160, 2161, 2162, 2163, 2164, 2165, 2166, 2167, 2168, 2169, 2170, 2171, 2172, 2173, 2174, 2175, 2176, 2177, 2178, 2179, 2180, 2181, 2182, 2183, 2184, 2185, 2186, 2187, 2188, 2189, 2190, 2191, 2192, 2193, 2194, 2195, 2196, 2197, 2198, 2199, 2200, 2201, 2202, 2203, 2204, 2205, 2206, 2207, 2208, 2209, 2210, 2211, 2212, 2213, 2214, 2215, 2216, 2217, 2218, 2219, 2220, 2221, 2222, 2223, 2224, 2225, 2226, 2227, 2228, 2229, 2230, 2231, 2232, 2233, 2234, 2235, 2236, 2237, 2238, 2239, 2240, 2241, 2242, 2243, 2244, 2245, 2246, 2247, 2248, 2249, 2250, 2251, 2252, 2253, 2254, 2255, 2256, 2257, 2258, 2259, 2260, 2261, 2262, 2263, 2264, 2265, 2266, 2267, 2268, 2269, 2270, 2271, 2272, 2273, 2274, 2275, 2276, 2277, 2278, 2279, 2280, 2281, 2282, 2283, 2284, 2285, 2286, 2287, 2288, 2289, 2290, 2291, 2292, 2293, 2294, 2295, 2296, 2297, 2298, 2299, 2300, 2301, 2302, 2303, 2304, 2305, 2306, 2307, 2308, 2309, 2310, 2311, 2312, 2313, 2314, 2315, 2316, 2317, 2318, 2319, 2320, 2321, 2322, 2323, 2324, 2325, 2326, 2327, 2328, 2329, 2330, 2331, 2332, 2333, 2334, 2335, 2336, 2337, 2338, 2339, 2340, 2341, 2342, 2343, 2344, 2345, 2346, 2347, 2348, 2349, 2350, 2351, 2352, 2353, 2354, 2355, 2356, 2357, 2358, 2359, 2360, 2361, 2362, 2363, 2364, 2365, 2366, 2367, 2368, 2369, 2370, 2371, 2372, 2373, 2374, 2375, 2376, 2377, 2378, 2379, 2380, 2381, 2382, 2383, 2384, 2385, 2386, 2387, 2388, 2389, 2390, 2391, 2392, 2393, 2394, 2395, 2396, 2397, 2398, 2399, 2400, 2401, 2402, 2403, 2404, 2405, 2406, 2407, 2408, 2409, 2410, 2411, 2412, 2413, 2414, 2415, 2416, 2417, 2418, 2419, 2420, 2421, 2422, 2423, 2424, 2425, 2426, 2427, 2428, 2429, 2430, 2431, 2432, 2433, 2434, 2435, 2436, 2437, 2438, 2439, 2440, 2441, 2442, 2443, 2444, 2445, 2446, 2447, 2448, 2449, 2450, 2451, 2452, 2453, 2454, 2455, 2456, 2457, 2458, 2459, 2460, 2461, 2462, 2463, 2464, 2465, 2466, 2467, 2468, 2469, 2470, 2471, 2472, 2473, 2474, 2475, 2476, 2477, 2478, 2479, 2480, 2481, 2482, 2483, 2484, 2485, 2486, 2487, 2488, 2489, 2490, 2491, 2492, 2493, 2494, 2495, 2496, 2497, 2498, 2499, 2500, 2501, 2502, 2503, 2504, 2505, 2506, 2507, 2508, 2509, 2510, 2511, 2512, 2513, 2514, 2515, 2516, 2517, 2518, 2519, 2520, 2521, 2522, 2523, 2524, 2525, 2526, 2527, 2528, 2529, 2530, 2531, 2532, 2533, 2534, 2535, 2536, 2537, 2538, 2539, 2540, 2541, 2542, 2543, 2544, 2545, 2546, 2547, 2548, 2549, 2550, 2551, 2552, 2553, 2554, 2555, 2556, 2557, 2558, 2559, 2560, 2561, 2562, 2563, 2564, 2565, 2566, 2567, 2568, 2569, 2570, 2571, 2572, 2573, 2574, 2575, 2576, 2577, 2578, 2579, 2580, 2581, 2582, 2583, 2584, 2585, 2586, 2587, 2588, 2589, 2590, 2591, 2592, 2593, 2594, 2595, 2596, 2597, 2598, 2599, 2600, 2601, 2602, 2603, 2604, 2605, 2606, 2607, 2608, 2609, 2610, 2611, 2612, 2613, 2614, 2615, 2616, 2617, 2618, 2619, 2620, 2621, 2622, 2623, 2624, 2625, 2626, 2627, 2628, 2629, 2630, 2631, 2632, 2633, 2634, 2635, 2636, 2637, 2638, 2639, 2640, 2641, 2642, 2643, 2644, 2645, 2646, 2647, 2648, 2649, 2650, 2651, 2652, 2653, 2654, 2655, 2656, 2657, 2658, 2659, 2660, 2661, 2662, 2663, 2664, 2665, 2666, 2667, 2668, 2669, 2670, 2671, 2672, 2673, 2674, 2675, 2676, 2677, 2678, 26

•