

CERTIFIED CORNER RECORDATION

Corner W-E-W 1/256 20/29 T. 35N R. 25W P.M.M. Lincoln County

1. 1980 CLC by Thomas C. Hill 5612S:

Found: No previous record of corner establishment on file.

Set:

A Cap on a 2½ ins. x 30 ins. alum. pipe, 26 ins. in the ground, with a collar of stone and mkd. as shown;

A Western Larch, 6 ins. in diam. bears S24°E, 4.4 ft. dist. mkd. 1/256 S20 BT;

A Western Larch, 10 ins. in diam. bears N33°W, 25.0 ft. dist., mkd. X BT;

Attached a Location poster to a Larch, 5 ins. in diam. bears S76°E, 16.2 ft. dist.

2. Found:

A USDA Aluminum monument, with cap 3¼ ins. in diam., 4 ins. out of ground, mkd. as shown;

A Western Larch, 10 ins. in diam., bears S24°E, 4.40 ft. dist. healed face;

A Western Larch, 12 ins. in diam., bears N33°W, 25.00 ft. dist., healed face;

A Steel T-Post, bears South, 4.00 ft. dist;

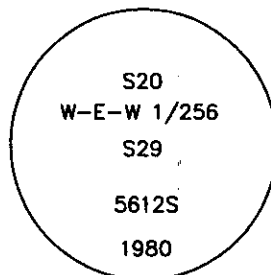
A Western Larch, 9 ins. in diam., bears S76°E, 16.20 ft. dist. with a location tag;

A Carsonite Post with LSM & Boundary tags bears East, 6.40 ft. dist.

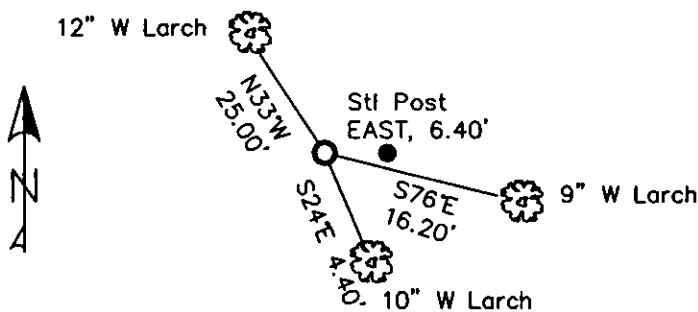
3. Stacked and painted a mound of stones around monument;

Repainted blazes and rings on all BTs;

Placed Steel Post with LSM & Boundary tags in front of carsonite post, East, 6.40 ft. dist.



MAGNETIC DECLINATION - 16° EAST



SKETCH OF CORNER

CERTIFICATION

I, CURT HECKROTH
 certify the information shown here is true and correct.
 Signature: *Curt Heckroth*
 Title: REGISTERED SURVEYOR

I, LAWRENCE A. GLAHE
 certify that this Corner Recordation represents work
 performed by me or under my direction in compliance with
 the "Corner Recordation Act" (P.L. 101, et seq. M.C.A.)
 Signature: *Lawrence A. Glahe*
 Title: REGISTERED SURVEYOR

Date: 11-10-10 9748 LS
 Employer: GLAHE & ASSOC., INC.

Office of Clerk and Recorder, County of Lincoln. This "corner

record" was filed for record c 229611 BOOK: CCR CC&R'S PAGE: 11596 Pages: 1

was noted on the cross-index

book No. _____

STATE OF MONTANA LINCOLN COUNTY

RECORDED: 11/15/2010 11:23 KOI: CC&R'S

TAMMY D. LAUER CLERK AND RECORDER

FEE: \$0.00

BY: *Lawrence A. Glahe*

TO: GLAHE & ASSOC., INC. P.O. BOX 1863, SANDPOINT, ID. 83860

Cross Index No. R-6.25 T. 35N R. 25W PMM

Adopted July 1, 1981, Montana Board of Professional Engineers & Land Surveyors

Sec. 20			

● corner this sheet

[illegible]

the 1990s, the number of people in the United States who are 65 years of age or older is projected to increase from 20 million to 30 million, and the number of people 75 years of age or older is projected to increase from 10 million to 15 million (U.S. Census Bureau, 1996). The number of people 85 years of age or older is projected to increase from 2 million to 4 million (U.S. Census Bureau, 1996). The number of people 90 years of age or older is projected to increase from 500,000 to 1 million (U.S. Census Bureau, 1996). The number of people 95 years of age or older is projected to increase from 100,000 to 200,000 (U.S. Census Bureau, 1996). The number of people 100 years of age or older is projected to increase from 10,000 to 20,000 (U.S. Census Bureau, 1996).

[illegible][illegible]

44

Journal of Management Studies, 20(6), 791-806.

Journal of Management Studies, 36(7), 809–826.