

CERTIFIED CORNER RECORDATION

Corner C-W-E-W 1/256 S20 T. 35N R. 25W P.M.M. Lincoln County

1. 1980 CLC by Thomas C. Hill 5612S:

Found: No previous record of corner establishment on file.

Set:

A Cap on a 2½ ins. x 30 ins. alum. pipe, 25 ins. in the ground, with a collar of stone and mkd. as shown;

A Douglas Fir, 15 ins. in diam. bears N81°W, 19.2 ft. dist. mkd. X BT;

A Douglas Fir, 8 ins. in diam. bears S11°W, 25.9 ft. dist., mkd. 1/256 S20 BT;

Attached a Location poster to a Douglas Fir, 24 ins. in diam. bears N24°E, 10.4 ft. dist.

2. Found:

A USDA Aluminum Monument, 3¼ ins. in diam., 5 ins. out of ground, surrounded by a mound of stone, mkd. as shown;

A Douglas Fir, dying, 10 ins. in diam., bears S11°W, 25.90 ft. dist., healed face;

A Douglas Fir, 16 ins. in diam., bears N81°W, 19.20 ft. dist., healed face;

A Douglas Fir, 27 ins. in diam., bears N24°E, 10.40 ft. dist. with a location tag;

A Carsonite Post with LSM & Boundary tags, bears South, 2 ft. dist.

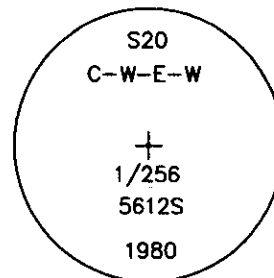
3. Established:

A Douglas Fir, 13 ins. in diam., bears S82°E, 56.20 ft. dist. scribed "C-W-E-W 1/256 S20 BT", placed an aluminum nail in side-center.

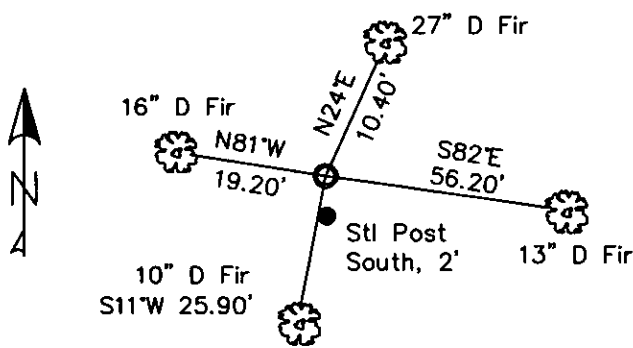
Restacked and painted stones around monument;

Repainted blazes and rings on all BTs;

Placed Steel Post with LSM & Boundary tags in front of carsonite post, South, 2 ft. dist.



MAGNETIC DECLINATION - 16° EAST



SKETCH OF CORNER

CERTIFICATION

I, CURT HECKROTH
 certify the information shown herein is true and correct.
 Signature Ground Party

I, LAWRENCE A. GLAHE
 certify that this Corner Location Certificate represents work
 performed by me or under my direction in compliance with
 the "Corner Restoration Act" (HB 22-101, et seq. M.C.A.)
 9748 LS

Date: 11-10-10 9748 LS

Employer: GLAHE & ASSOC., INC.

Office of Clerk and Recorder, County of Lincoln. This "corner

record" was filed for reco: 229610 BOOK: CCR CC&R'S PAGE: 11595 Pages: 1

was noted on the cross-i: STATE OF MONTANA LINCOLN COUNTY RECORDED: 11/15/2010 11:22 KOI: CC&R'S

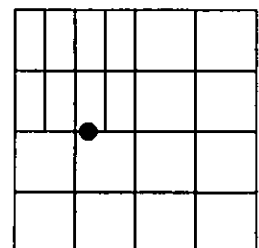
book No. TAMMY D. LAUER CLERK AND RECORDER

FEE: \$0.00 BY: Lawrence A. Glahe
 TO: GLAHE & ASSOC., INC. P.O. BOX 1863, SANDPOINT, ID. 83860,

Cross Index No. P-6.25 T. 35N R. 25W PMM

Adopted July 1, 1981, Montana Board of Professional Engineers & Land Surveyors

Sec. 20



● corner this sheet

THE UNIVERSITY OF CHICAGO PRESS

CHICAGO, ILLINOIS 60607

ST. LOUIS, MISSOURI 63101

NEW YORK, NEW YORK 10003

PHILADELPHIA, PENNSYLVANIA 19104

PRINCETON, NEW JERSEY 08540

RANDOLPH, MASSACHUSETTS 01901

ROCHESTER, NEW YORK 14620

SAN FRANCISCO, CALIFORNIA 94102

SEATTLE, WASHINGTON 98101

SINGAPORE 050001

SUNNYVALE, CALIFORNIA 94086

TORONTO, ONTARIO M5S 1A5

WASHINGTON, D.C. 20037

WILMINGTON, DELAWARE 19801

YALE, NEW HAVEN, CONNECTICUT 06510

YORK, NEW YORK 10003

YORK, PENNSYLVANIA 17403

YORK, UTAH 84601

YORK, VIRGINIA 22091

YORK, WISCONSIN 53091

YORK, WYOMING 82401

YORK, CANADA M5S 1A5

YORK, AUSTRALIA 2000

YORK, SOUTH AFRICA 2000

YORK, INDIA 110001