

CERTIFIED CORNER RECORDATION

Corner N 16th S19/S20 T. 35N R. 25W P.M.M. Lincoln County

1. 1980 CLC by Thomas C. Hill 5612S:

Found: No previous record of corner establishment on file.

Set:

A Cap on a 2½ ins. x 30 ins. alum. pipe, 24 ins. in the ground, with a collar of stone (mound of stone 2 ft. W of corner) and mkd. as shown;

A Western Larch, 11 ins. in diam. bears S78°W, 44.8 ft. dist. mkd. N 1/16 S19 BT;

A Douglas Fir, 13 ins. in diam. bears S81°E, 18.7 ft. dist., mkd. N 1/16 S20 BT;

Attached a Location poster to a Douglas Fir, 9 ins. in diam. bears S79°E, 27.5 ft. dist.

2. Found:

A USDA Aluminum monument, 3¼ ins. cap, 6 ins. out of ground, surrounded by a mound of stone, mkd. as shown;

A Douglas Fir, 18 ins. in diam., bears S81°E, 18.70 ft. dist., healed face;

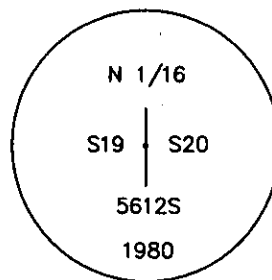
A Western Larch, 12 ins. in diam., bears S78°W, 44.80 ft. dist., healed face;

A Douglas Fir, 14 ins. in diam., bears S79°E, 27.50 ft. dist. with a location tag;

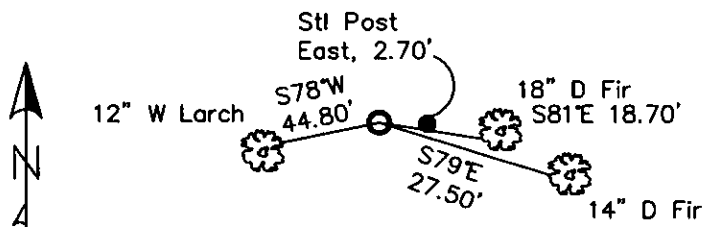
A Steel Post with LSM & Boundary tags, bears East, 2.70 ft. dist.

3. Restacked and painted stones around monument;

Repainted blazes and rings on all BTs; placed Location tag on Record Tree.



MAGNETIC DECLINATION - 16° EAST



SKETCH OF CORNER

CERTIFICATION

I, CURT HECKROTH

certify the information shown herein is true and correct.

Curt Heckroth

Signature of Ground Party - *Curt Heckroth*

I, LAWRENCE A. GLAHE

certify that this corner recordation was performed by me or under my direction in compliance with the "Corner Recordation Act" (P.L. 92-401, et seq. M.C.A.)

Lawrence A. Glahe

Signature of Surveyor - *Lawrence A. Glahe*

Date 10-10-10 No. 9748 LS

Employer: GLAHE & ASSOC., INC.

Office of Clerk and Recorder, County of Lincoln. This "corner

record" was filed for recd

229608 BOOK: CCR CC&R'S PAGE: 11593 Pages: 1

STATE OF MONTANA LINCOLN COUNTY

was noted on the cross-

RECORDED: 11/15/2010 11:20 KOI: CC&R'S

book No. _____

TAMMY D. LAUER CLERK AND RECORDER

FEE: \$0.00

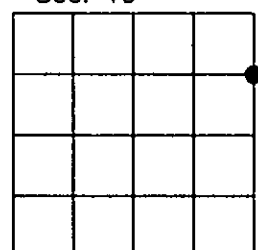
BY: *Lawrence A. Glahe*

TO: GLAHE & ASSOC., INC. P.O. BOX 1863, SANDPOINT, ID. 83860,

Cross Index No. 0-5 T. 35N R. 25W PMM

Adopted July 1, 1981, Montana Board of Professional Engineers & Land Surveyors

Sec. 19



● corner this sheet

