

CERTIFIED CORNER RECORDATION

Corner NE 16th S19 T. 35N R. 25W P.M.M. Lincoln County

1. 1980 CLC by Thomas C. Hill 5612S:

Found: An unrecorded 5/8 ins. rebar in the position of N E 1/16 S19. Plastic cap mkd. 2989ES.
Set:

A Cap on a 2 1/2 ins. x 30 ins. alum. pipe, 25 ins. in the ground, with a collar of stone and mkd. as shown;

A Douglas Fir, 7 ins. in diam. bears N53°W, 29.5 ft. dist. mkd. NE 1/16 S19 BT;

A Douglas Fir, 10 ins. in diam. bears N78°E, 26.7 ft. dist., mkd. X BT;

Attached a Location poster to a Western Larch, 9 ins. in diam. bears N34°W, 17.3 ft. dist.
Place found rebar inside of pipe.

2. Found:

A USDA Aluminum monument, 3 1/4 ins. cap, 2 ins. out of the ground, mkd. as shown;

A Douglas Fir, 16 ins. in diam., bears N78°E, 26.70 ft. dist., healed face;

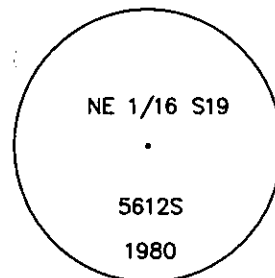
A Douglas Fir, 12 ins. in diam., bears N53°W, 29.50 ft. dist., healed face;

A Western Larch, 9 ins. in diam., bears N34°W, 17.30 ft. dist. with location tag.

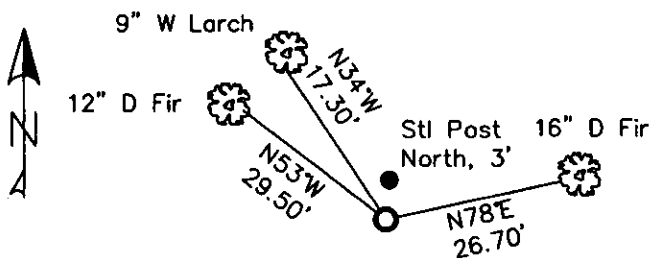
3. Stacked and painted a mound of stones around monument;

Repainted blazes and rings on all BTs; placed new BT tag on N78°E BT;

Placed Steel Post with LSM & Boundary tags, North, 3 ft. dist.



MAGNETIC DECLINATION - 16° EAST



SKETCH OF CORNER

CERTIFICATION

I, CURT HECKROTH
certify the information shown herein to be true and correct.

Curt Heckroth
Signature Ground Party

I, LAWRENCE A. GLAHE
certify that this Corner Record correctly represents work performed by me or under my supervision in compliance with the "Corner Recordation Act" (Mont. Code Annotated, Title 82-401, et seq. M.C.A.)

Lawrence A. Glahe
Signature Registered Professional Engineer

Date: 11-16-10 NO. 9748 LS
Employer: GLAHE & ASSOC., INC.

Office of Clerk and Recorder, County of Lincoln. This "corner

record" was filed for record 229607 BOOK: CCR CC&R'S PAGE: 11592 Pages: 1

was noted on the cross-index STATE OF MONTANA LINCOLN COUNTY

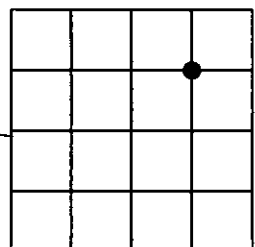
book No. RECORDED: 11/15/2010 11:19 KOI: CC&R'S

TAMMY D. LAUER CLERK AND RECORDER
FEE: \$0.00 BY: *Tammy D. Lauer*
TO: GLAHE & ASSOC., INC. P.O. BOX 1863, SANDPOINT, ID. 83860,

Cross Index No. 0-4 T. 35N R. 25W PMM

Adopted July 1, 1981, Montana Board of Professional Engineers & Land Surveyors

Sec. 19



● corner this sheet

