

CERTIFIED CORNER RECORDATION

Corner E 16th S18/S19 T. 35N R. 25W P.M.M. Lincoln County

1. 1980 CLC by Thomas C. Hill 5612S:

Found: No previous record of corner establishment on file.

Set:

- An Alum Cap on a 2½ ins. x 30 ins. alum. pipe, 25 ins. in the ground, mkd. as shown;
- A Douglas Fir, 8 ins. in diam. bears N32°E, 7.5 ft. mkd. E 1/16 S18 BT;
- A Douglas Fir, 9 ins. in diam. bears S34°E, 23.4, mkd. E 1/16 S19 BT;
- Attached a Location poster to a Douglas Fir, 3 ins. in diam. bears N72°W, 2.3 ft. dist.

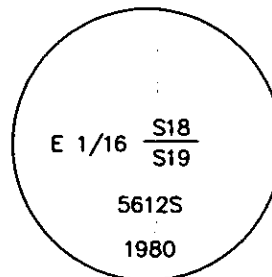
2. Found:

- A USDA Aluminum Monument, 3¼ ins. diam. cap, 5 ins. out of ground, surrounded by a mound of stone, mkd. as shown;
- A Douglas Fir, 14 ins. in diam., bears N32°E, 7.50 ft. dist., healed face;
- A Douglas Fir, 16 ins. in diam., bears S34°E, 23.40 ft. dist., healed face;
- No evidence of Douglas Fir, 3 ins. in diam. with location tag;
- A Carsonite Post with LSM & Boundary tags bears North, 3 ft. dist.

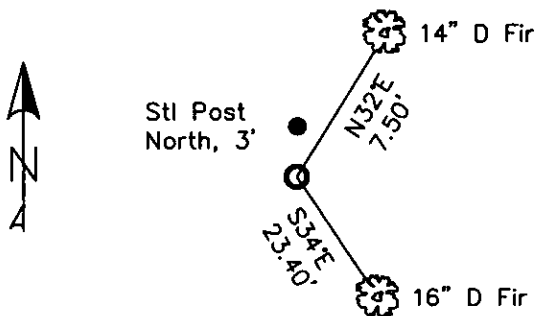
3. Restacked and painted stones around monument;

Repainted blazes and rings on all BTs;

Placed Steel Post with LSM & Boundary tags in front of carsonite post, North, 3 ft. dist.



MAGNETIC DECLINATION - 16° EAST



SKETCH OF CORNER

CERTIFICATION

I, CURT HECKROTH
certify that the information shown herein is true and correct.

I, LAWRENCE A. GLAHE
certify that this Corner Recordation represents work performed by me or under my direction in compliance with the "Corner Recordation Act" (MCA 7-2-21-401, et seq. M.C.A.)

Date: 11/15/2010 9748 LS
Employer: GLAHE & ASSOC., INC.

Office of Clerk and Recorder, County of Lincoln. This "corner

record" was filed for record (229606 BOOK: CCR CC&R'S PAGE: 11591 Pages: 1

was noted on the cross-index STATE OF MONTANA LINCOLN COUNTY RECORDED: 11/15/2010 11:18 KOI: CC&R'S

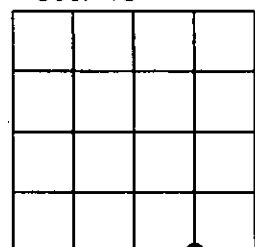
book No. TAMMY D. LAUER CLERK AND RECORDER BY: Deanna Denon Deputy

FEE: \$0.00 TO: GLAHE & ASSOC., INC. P.O. BOX 1863, SANDPOINT, ID. 83866

Cross Index No. N-4 T. 35N R. 25W PMM

Adopted July 1, 1981, Montana Board of Professional Engineers & Land Surveyors

Sec. 18



● corner this sheet

10