

# CERTIFIED CORNER RECORDATION

Corner CN 1/16 of S18 T. 35N R. 25W P.M.M. Lincoln County

## 1. 1980 CLC by Thomas C. Hill 5612S:

Found:

An unrecorded 5/8 ins. diam. rebar with a plastic cap stamped "2989 ES" in the position of the CN 1/16 Sec. 18. (see Cert of Survey #871, filed in Lincoln County.)

Set:

An Alum Cap on a 2 1/2 ins. x 30 ins. alum. pipe, 25 ins. in the ground, mkd. as shown;

A Larch, 8 ins. in diam. bears S1°E, 7.3 ft. mkd. CN 1/16 S18 BT;

A Larch, 5 ins. in diam. bears N44°W, 27.2, mkd. X BT;

Attached a Location poster on a Larch, 5 ins. in diam. bears S37°E, 11.1 ft. dist.

Raise a collar of stone around aluminum pipe.

## 1994 Alvah F. Hughes:

Found:

A 3 1/4 ins. Alum. Cap on a 2 1/2 ins. diam. alum. pipe, 4 ins. above ground, firmly set, mkd. as shown;

A Larch, 11 ins. in diam. bears S1°E, 7.3 ft. dist., healed face.

A Larch snag, 7 ins. in diam. bears N44°W, 27.2 ft. dist., visible scribing;

Established:

A Larch, 10 ins. in diam. bears N46°W, 28.8 ft. dist. mkd. CN 1/16 S18 BT.

A galvanized steel guard post, 6 ft. long with LSM and PB decals, West, 3 ft.

## 2. Found:

A USDA Aluminum Monument with 3 1/4 ins. diam. cap, 4 ins. out of ground, surrounded by a scattered mound of stone, mkd. as shown;

A Western Larch, 13 ins. in diam., bears S1°E, 7.30 ft. dist., healed face;

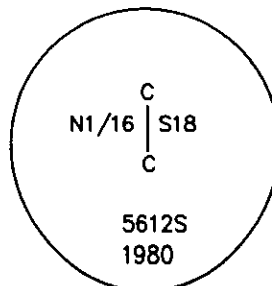
A Western Larch, down, 7 ins. in diam., bears N44°W, 27.20 ft. dist., with BT tag;

A Western Larch, 12 ins. in diam., bears N46°W, 28.80 ft. dist., healed face;

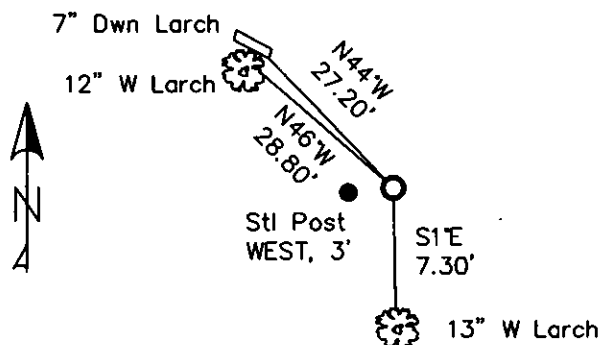
A Steel Post with LSM & Boundary tags, bears West, 3 ft. dist.

## 3. Restacked and painted stones around monument;

Repainted blazes and rings on all BTs; placed BT tag on S1°E BT.



MAGNETIC DECLINATION - 16° EAST



SKETCH OF CORNER

CERTIFICATION

I, CURT HECKROTH  
 certify the information shown above is true and correct.  
 I, LAWRENCE A. GLAHE  
 certify that this Corner Recordation represents work  
 performed by me or under my direction in compliance with  
 the "Corner Recordation Act" (P.L. 86-401, et seq. (C.S.A.))  
 Date: 11-10-10 9748 LS  
 Employer: GLAHE & ASSOC., INC.

Office of Clerk and Recorder, County of Lincoln. This "corner

record" was filed for record 229603 BOOK: CCR CC&R'S PAGE: 11588 Pages: 1

was noted on the cross-index STATE OF MONTANA LINCOLN COUNTY  
 RECORDED: 11/15/2010 11:15 KOI: CC&R'S

book No. TAMMY D. LAUER CLERK AND RECORDER  
 FEE: \$0.00 BY: Seannie Seannie

TO: GLAHE & ASSOC., INC. P.O. BOX 1863, SANDPOINT, ID. 83860.

Cross Index No. K-3 T. 35N R. 25W PMM

Adopted July 1, 1981, Montana Board of Professional Engineers & Land Surveyors

Sec. 18


● corner this sheet

