

CERTIFIED CORNER RECORDATION

Corner SW Sec Cor of Sec. 7 T. 35N R. 25W P.M.M. Lincoln County

1. 1893 GLO Original Survey by A.L. Jaqueth:

Set:

A limestone and four bearing trees.

1960 BLM Remonumentation record by W.E. Stephens et al:

At the cor. of secs. 7, 12, 13 & 18, on the W boundary of the Tp., monumented with a limestone 14x8x6 ins. markings illegible, loosely set in the ground and witnessed by the remains of the original bearing tree, set:

An Iron Post, 28 ins. long, 2 1/2 ins. diam., 28 ins. in the ground, in concrete, with Brass cap mkd.

Established three new bearing trees. Bury the original stone alongside and raise a mound of stone, 3 ft. base, 2 ft. high. W of the iron post.

April 1978 D.K. Marquardt, Rd'd 1981:

Found:

A US Cadastral Survey Brass Cap, 2 ins. out of the ground,

Three old BT & new RMs. RMs marked & BO stamped.

A Larch, 8 ins. in diam., bears N36°W, 45 lks. dist;

A Doug Fir, 8 ins. in diam., bears N50°E, 48 lks. dist;

A Doug. Fir, 8 ins. in diam., bears S27°E, 18.5 ft. dist.;

A Doug Fir stump, 12 ins. in diam., bears S54°W, 22 lks. dist., recently logged.

1980 C.L.C. by Thomas C. Hill:

Found:

A 2 1/2 ins. BLM Brass Cap approx. 3 ins. above ground, mkd. as shown:

A Larch, 7 ins. in diam. bears N36°W, 29.5 ft. healed face, alive and well.

A Fir, 9 ins. in diam. bears N52°E, 32.2 ft. healed face, alive and well.

A Fir, 9 ins. in diam. bears S28°E, 20.3 ft. healed face, alive and well.

A Fir stump, 12 ins. in diam. bears S55°W, 14.1 ft.

1994 Resurvey by Alvah F. Hughes:

Found:

A 2 1/2 ins. diam. iron pipe, 2 ins. above ground, firmly set, with

A Brass Cap, 3 1/4 ins. diam mkd as shown;

A Fir, 9 ins. in diam., bears N50°E, 32.7 ft. dist., healed face;

A Larch snag, 6 ins. in diam. bears N54°E, 25.2 ft. dist., visible scribing;

A Larch stump, 6 ins. in diam. bears S51°E, 14.5 ft dist., no visible scribing;

A Fir, 10 ins. in diam., bears S28°E, 20.3 ft. dist., healed face.

The remains of the pine at S40°W are missing due to logging operations.

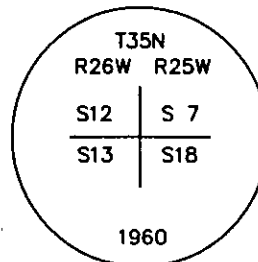
A Fir stump, 10 ins. in diam. bears S54°W, 14.1 ft. dist., healed face;

A Fir, 13 ins. in diam., bears N32°W, 25.0 ft. dist., healed face.

A Larch, 6 ins. in diam., bears N36°W, 29.6 ft. dist. healed face.

Established:

A Larch, 10 ins. in diam. bears S68°W, 42. 6 ft. dist., mkd. T35N R26W S13 BT.



2. Found:

A BLM Brass Monument, 3 1/4 ins. cap, 2 ins. out of ground surrounded by a mound of stone and mkd. as shown;

A Douglas Fir, 10 ins. in diam., bears N50°E, 32.70 ft. dist, healed face;

A Douglas Fir, 11 ins. in diam., bears S28°E, 20.30 ft. dist., healed face;

A Western Larch, 10 ins. in diam., bears S68°W, 42.60 ft. dist., partially healed face, illegible scribing visible;

A Western Larch, 8 ins. in diam., bears N36°W, 29.60 ft. dist., healed face;

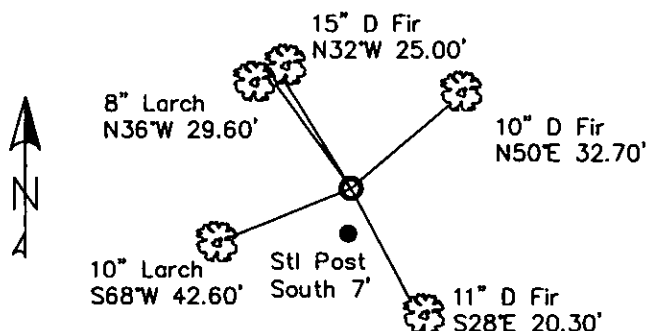
A Douglas Fir, 15 ins. in diam., bears N32°W, 25.00 ft. dist., healed face;

A Carsonite Post with LSM & Boundary tags, bears South, 7 ft. dist.

3. Restacked and painted stones around monument. Repainted blazes and rings on all BTs.

Placed new BT tag on Section 7 BT; Placed Steel Post with LSM & Boundary tag in place of carsonite post.

MAGNETIC DECLINATION - 16° EAST



SKETCH OF CORNER

CERTIFICATION
I, CURT HECKROTH
certify the information shown herein is true and correct.
Curt Heckroth
I, LAWRENCE A. GLAHE
certify that this Corner Recordation represents work
performed by me or under my direction in compliance with
the "Corner Recordation Act" (MCA 22-1-01, et seq. M.C.A.)
9748 LS
Dated: 11-10-10
REGISTERED
SURVEYOR
Employer: GLAHE & ASSOC., INC.

Office of Clerk and Recorder, County of Lincoln. This "corner

record" was filed for r 229601 BOOK: CCR CC&R'S PAGE: 11586 Pages: 1

was noted on the cro: STATE OF MONTANA LINCOLN COUNTY

TAMMY D. LAUER CLERK AND RECORDER

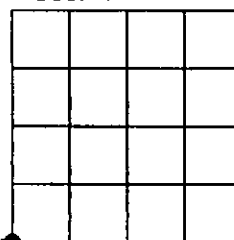
book No. FEE: \$0.00 BY: [Signature]

TO: GLAHE & ASSOC., INC. P.O. BOX 1863, SANDPOINT, ID. 83860,
J-1 T. 35N R. 25W PMM

Cross Index No. J-1 T. 35N R. 25W PMM

Adopted July 1, 1981, Montana Board of Professional Engineers & Land Surveyors

Sec. 7



● corner this sheet

