

INSTRUCTIONS

1. Original and/or subsequent record used to evaluate the corner position.
2. Description of evidence found, note discrepancies in the record, state method of establishing lost or obliterated corners.
3. Description of monument and accessories set to perpetuate the corner position.
4. Sketch of corner, show all pertinent data which can best be shown in a sketch example, corner marking, topography ties, position of accessories, etc.
5. Certification must be signed and sealed by Land Surveyor registered in the State of Montana.
6. Fill in Cross Index & Section Diagram at bottom of sheet.

CERTIFIED CORNER RECORDATION

Corner 2 of HES 1071 T. 35 N. R. 33 W. P.M.M. Lincoln County

- I. 1921 H.E.S. original record by Grant Higgins: Placed a small stone, marked with a cross (x) under a sandstone, 25x12x8 ins., 15 ins. in the ground, marked 2 HES 1071 on SW face and a cross (x) on top for the exact corner point, from which,

A cross (x) on a white pine tree, 12 ins. dia., bears $S61^{\circ}25'E$, 46 lks. (30.36 ft.) dist.

A cross (x) on a white pine tree, 15 ins. dia., bears $N30^{\circ}23'W$, 75 lks. (49.50 ft.) dist.

Each blazed and scribed 2 HES 1071 BT.

Raise a mound of stone, 4 ft. base, 2 ft. high, SW of corner.

- II. Found a 12x8 ins. stone, firmly set, protruding 13 ins. out of the ground, mkd. 2 HES 1071 on SW face and a cross on top. Mound of stone, 3 ft. dia., 1 ft. high, SW of corner.

From which:

A fallen tree, 16 ins. dia., bears $S59^{\circ}E$, 30.8 ft. dist., mkd. X and 2 HES 1071.

A rotten stump, 20 ins. dia., bears $N29^{\circ}W$, 49.5 ft. dist.

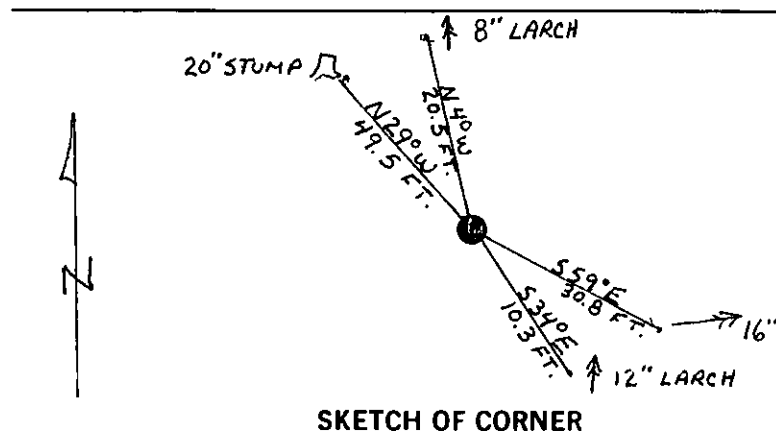
- III. Established two new bearing trees

A larch, 12 ins. dia., bears $S34^{\circ}E$, 10.3 ft. dist., mkd. 2 HES 1071 BT.

A larch, 8 ins. dia., bears $N4^{\circ}W$, 20.5 ft. dist., mkd. 2 HES 1071 BT.

Painted red bands around the bearing trees and attached Land Survey Monument and Bearing Tree signs.

Set a 6 ft. galvanized steel guard post with Land Survey Marker and Property Boundary decals. $S14^{\circ}W$, 3 ft. Magnetic declination: 20° East.



SKETCH OF CORNER

CERTIFICATION

I, Gary Crismon
certify the information shown herein is true and correct.

Gary Crismon
Signature Ground Party Chief

I, Alvah F. Hughes
certify that this Corner Record correctly represents work performed by me or under my direction in compliance with the "Corner Recordation Act" (70-22-101, et seq., M.C.A.)

Alvah F. Hughes
Signature of Surveyor & Seal

Date: 1/8/91 Reg. No. 7322-L9

Employer: U.S. FOREST SERVICE

Office of Clerk and Recorder, County of Lincoln. This "corner

record" was filed for record on 1-10-91

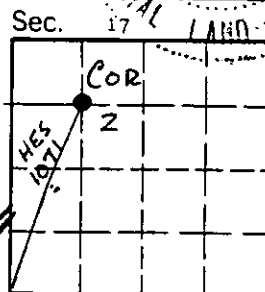
was noted on the cross-index plat and is assigned page No. 4471, in

book No. _____

Coral M. Cummings by Bill Brachoff
County Official

2 HES 1071 35 N 33 W

Cross Index No. _____ T. _____ R. _____ P.M.M.



• - corner this sheet