

INSTRUCTIONS

1. Original and/or subsequent record used to evaluate the corner position.
2. Description of evidence found, note discrepancies in the record, state method of establishing lost or obliterated corners.
3. Description of monument and accessories set to perpetuate the corner position.
4. Sketch of corner, show all pertinent data which can best be shown in a sketch example, corner marking, topography ties, position of accessories, etc.
5. Certification must be signed and sealed by Land Surveyor registered in the State of Montana.
6. Fill in Cross Index & Section Diagram at bottom of sheet.

CERTIFIED CORNER RECORDATION

Corner 7 of HES 1071 T. 35 N. R. 33 W. P.M.M. Lincoln County

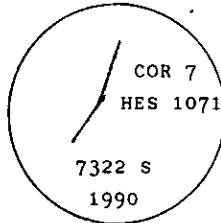
- I. 1921 H.E.S. original record by Grant Higgins: Placed a small stone, marked with a cross (x) under a granite stone, 24x9x5 ins., 14 ins. in the ground, marked 7 HES 1071 on SE face and a cross (x) on top for the exact corner point, from which,
- A cross (x) on a cedar tree, 15 ins. dia., bears S68°18'E, 37 lks. (24.42 ft.) dist.
- A cross (x) on a cedar tree, 11 ins. dia., bears S48°59'W, 35 lks. (23.10 ft.) dist.
- Each blazed and scribed 7 HES 1071 BT.

Raise a mound of stone, 4 ft. base, 2 ft. high, SE of corner.

- II. Found a 10x5 ins. stone, firmly set, protruding 8 ins. out of the ground, mkd. 7 HES 1071 on SE face and a cross on top. Mound of stone, 4 ft. dia., 2 ft. high, SE of corner.
- Position for SE bearing tree falls in a dirt road.
- SW bearing tree not found due to old logging activity.

I accept this position as being original without a supporting survey tie.

- III. At the corner position, set a 2 1/2 ins. dia. aluminum pipe, 30 ins. long, 24 ins. in the ground, with a 3 1/4 ins. aluminum cap mkd. as shown:

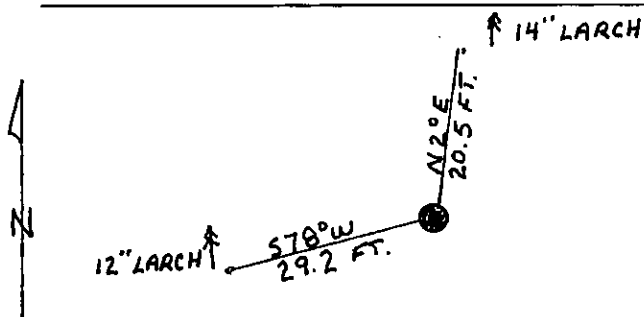


From which:

- A larch, 14 ins. dia., bears N2°E, 20.5 ft. dist., mkd. 7 HES 1071 BT.
- A larch, 12 ins. dia., bears S78°W, 29.2 ft. dist., mkd. 7 HES 1071 BT.

Painted red bands around the bearing trees and attached Land Survey Monument and Bearing Tree signs.

Set a 6 ft. galvanized steel guard post with Land Survey Marker and Property Boundary decals, N12°E, 2 ft. Magnetic declination: 20° East.



SKETCH OF CORNER

CERTIFICATION

- I, Kevin A. Todd
certify the information shown herein is true and correct.

Kevin A. Todd
Signature Ground Party Chief

- I, Alvah F. Hughes
certify that this Corner Record correctly represents work performed by me or under my direction in compliance with the "Corner Recordation Act" (70-22-101, et seq., M.C.A.).

Alvah F. Hughes
Signature of Surveyor

Date: 1/8/91 Reg. No. 7322

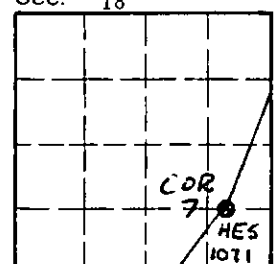
Employer: U.S. FOREST SERVICE

Office of Clerk and Recorder, County of Lincoln. This "corner record" was filed for record on Jan. 10, 1991 was noted on the cross-index plat and is assigned page No. 4467, in book No. Coral Cummings by Bill Beecher

County Official

7 HES 1071 35 N 33 W
Cross Index No. T. R. PMM

Sec. 18



• - corner this sheet