

INSTRUCTIONS

1. Original and/or subsequent record used to evaluate the corner position.
2. Description of evidence found, note discrepancies in the record, state method of establishing lost or obliterated corners.
3. Description of monument and accessories set to perpetuate the corner position.
4. Sketch of corner, show all pertinent data which can best be shown in a sketch example, corner marking, topography ties, position of accessories, etc.
5. Certification must be signed and sealed by Land Surveyor registered in the State of Montana.
6. Fill in Cross Index & Section Diagram at bottom of sheet.

CERTIFIED CORNER RECORDATION

2 of H.E.S. 1137
Corner 5 of H.E.S. 846 T. 35 N. R. 33 W. P.M.M. Lincoln County

- I. 1917 H.E.S. 846 original record by E. R. Johnson: "Set a small stone, marked with a cross (x), under a quartzite stone, 36x24x12 ins., 26 ins. in the ground, marked 5 HES 846 on NE face and a cross (x) on top for exact corner point, from which

A cross (x) on a larch tree, 8 ins. dia., bears N34°00'E, 16 lks. dist.

A cross (x) on a larch tree, 8 ins. dia., bears S50°15'W, 19 lks. dist.; each blazed and scribed 5 HES 846 BT.

Raise a mound of earth and stone 4 ft. base, 2 ft. high, NE of corner."

1922 H.E.S. 1137 record by J. F. Pfau: "Intersect Cor. No. 5 of accepted HES No. 846, which is a quartzite stone in place, 30x24x12 ins. above ground, marked and witnessed as described by the Surveyor General . . . I adopt this cor. for Cor. No. 2 of this survey, and mark it 2 HES 1137 on the NW face. The cross (x) on stone is the exact cor. point, from which

A cross (x) on a spruce tree, 10 ins. dia., bears N75°00'W, 28 lks. dist. (New BT)

A cross (x) on a spruce tree, 6 ins. dia., bears N10°30'W, 34 lks. dist. (New BT), each blazed and scribed 2 HES 1137 BT.

Raise a mound of earth and stone 4 ft. base, 2 ft. high, NW of cor."

- II. Found a set stone, 24x18 ins., 12 ins. above the ground, marked 2 HES 1137 on NW face and 5 HES 846 on the NE face with an X on top, from which

A root crown, 14 ins. dia., bears N34°E, 9.8 ft. (14.8 lks.) dist.

A larch, 14 ins. dia., bears N46°W (rcd: S50°15'W), 12.9 ft. (19.5 lks.) dist., scribe HES 846 is visible.

A mound of stone, 4 ft. base by 2 ft. high, NW of corner.

- III. Established four new bearing trees:

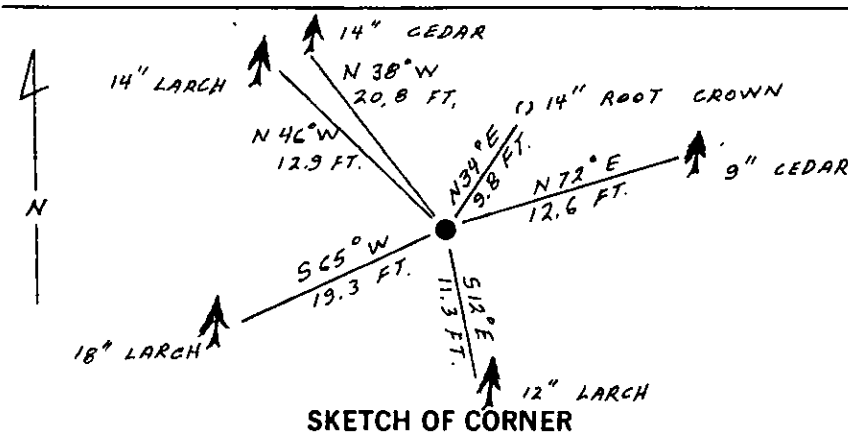
A cedar, 9 ins. dia., bears N72°E, 12.6 ft. dist., scribed X BT.

A larch, 12 ins. dia., bears S12°E, 11.3 ft. dist., scribed 5 HES 846 BT.

A larch, 18 ins. dia., bears S65°W, 19.3 ft. dist., scribed 2 HES 1137 BT.

A cedar, 14 ins. dia., bears N38°W, 20.8 ft. dist., scribed 2 HES 1137 BT.

Painted red bands around the bearing trees and attached Land Survey Monument and Bearing Tree signs. Set a 6 ft. galvanized steel guard post with Land Survey Marker and Property Boundary decals, East, 1 ft. Magnetic Declination: 20°30' East



CERTIFICATION

I, Robin Glazier
certify the information shown herein is true and correct.

Signature Ground Party Chief

I, Alvah F. Hughes
certify that this Corner Record correctly represents work performed by me or under my direction in compliance with the "Corner Recordation Act" (70-22-101, et seq., M.C.A.)

Signature of Surveyor

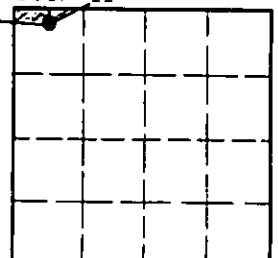
Date: 1/5/90 Reg. No. 7322

Employer: U.S. FOREST SERVICE

Office of Clerk and Recorder, County of Lincoln. This "corner record" was filed for record on Jan 16, 1990 was noted on the cross-index plat and is assigned page No. 4224, in book No. _____

Cross Index No. 5 HES 846 T. 35 N. R. 33 W. P.M.M.

Sec. 11



• - corner this sheet