

INSTRUCTIONS

1. Original and/or subsequent record used to evaluate the corner position.
2. Description of evidence found, note discrepancies in the record, state method of establishing lost or obliterated corners.
3. Description of monument and accessories set to perpetuate the corner position.
4. Sketch of corner, show all pertinent data which can best be shown in a sketch example, corner marking, topography ties, position of accessories, etc.
5. Certification must be signed and sealed by Land Surveyor registered in the State of Montana.
6. Fill in Cross Index & Section Diagram at bottom of sheet.

CERTIFIED CORNER RECORDATION

Corner 3 of H.E.S. 1137 T. 35 N. R. 33 W. P.M.M. Lincoln County

- I. 1922 H.E.S. original record by J. F. Pfau: "Place a small stone marked with a cross (x) under a quartzite stone, 30x12x10 ins., 20 ins. in the ground, marked 3 HES 1137 on NE face, and a cross (x) on top for the exact cor. point, from which

A cross (x) on a spruce tree, 12 ins. dia., bears N17°30'E, 21 lks. dist.

A cross (x) on a spruce tree, 10 ins. dia., bears N78°00'E, 18 lks. dist., each blazed and scribed 3 HES 1137 BT.

Raise a mound of stone 4 ft. base, 2 ft. high NE of cor."

- II. Found a set stone, 9x9 ins., 12 ins. out of the ground, marked 3 HES 1137 on the NE face, from which

A spruce, 29 ins. dia., bears N18°E, 13.1 ft. (19.8 lks.) dist., scribe HE is visible.

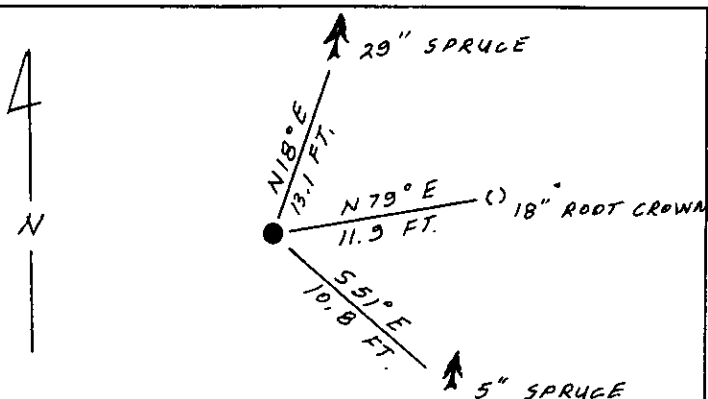
A root crown, 18 ins. dia., bears, N79°E, 11.9 ft. (18 lks.) dist.

- III. Established one new bearing tree:

A spruce, 5 ins. dia., bears S51°E, 10.8 ft. dist., scribed X BT.

Painted red bands around the bearing trees and attached Land Survey Monument and Bearing Tree signs. Set a 6 ft. galvanized steel guard post with Land Survey Marker and Property Boundary decals, North, 2.8 ft.

Magnetic Declination: 20°30' East



SKETCH OF CORNER

CERTIFICATION

I, Robin Glazier
certify the information shown herein is true and correct.

Signature Ground Party Chief

I, Alvah F. Hughes
certify that this Corner Record correctly represents work performed by me or under my direction in compliance with the "Corner Recordation Act" (70-22-101, et seq., M.C.A.)

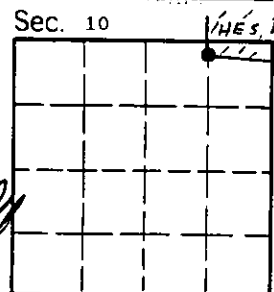
Signature of Surveyor & Seal
Date: 1/4/90 Reg. No. 7320

Employer: U.S. FOREST SERVICE

Office of Clerk and Recorder, County of Lincoln. This "corner record" was filed for record on Jan 16, 1990 was noted on the cross-index plat and is assigned page No. 4222, in book No. _____

County Official

Cross Index No. 3 HES 1137 T. 35 N R. 33 W P.M.M.



• - corner this sheet