

## INSTRUCTIONS

1. Original and/or subsequent record used to evaluate the corner position.
2. Description of evidence found, note discrepancies in the record, state method of establishing lost or obliterated corners.
3. Description of monument and accessories set to perpetuate the corner position.
4. Sketch of corner, show all pertinent data which can best be shown in a sketch example, corner marking, topography ties, position of accessories, etc.
5. Certification must be signed and sealed by Land Surveyor registered in the State of Montana.
6. Fill in Cross Index & Section Diagram at bottom of sheet.

## CERTIFIED CORNER RECORDATION

Corner 4 of H.E.S. 1137 T. 35 N. R. 33 W. P.M.M. Lincoln County

- I. 1922 H.E.S. original record by J. F. Pfau: "Place a small stone marked with a cross (x) under a granite stone, 24x10x10 ins., 14 ins. in the ground, marked 4 HES 1137 on SE face, and a cross (x) on top for the exact cor. point, from which

A cross (x) on a tamarack tree, 12 ins. dia., bears S67°50'E, 62 lks. dist.

A cross (x) on a balsam fir tree, 12 ins. dia., bears S13°20'W, 37 lks. dist., each blazed and scribed 4 HES 1137 BT.

Raise a mound of earth 4 ft. base, 2 ft. high SE of cor."

- II. Found a set stone, 8x9 ins., 6 ins. out of ground, marked 4 HES 1137 on SE face and X on top

No original bearing trees found, due to logging and road building activity.

- III. Establish two new bearing trees:

A larch, 7 ins. dia., bears N56°E, 5.4 ft. dist., scribed 4 HES 1137 BT.

A larch, 6 ins. dia., bears N45°W, 6.3 ft. dist., scribed X BT.

Painted red bands around the bearing trees and attached Land Survey Monument and Bearing Tree signs.

Set a 6 ft. galvanized steel guard post with Land Survey Marker and Property Boundary decals, South. 3 ft.

Magnetic Declination: 20°30' East

## CERTIFICATION

I, Gary C. Crismon  
certify the information shown herein is true and correct.

Gary C. Crismon  
Signature Ground Party Chief

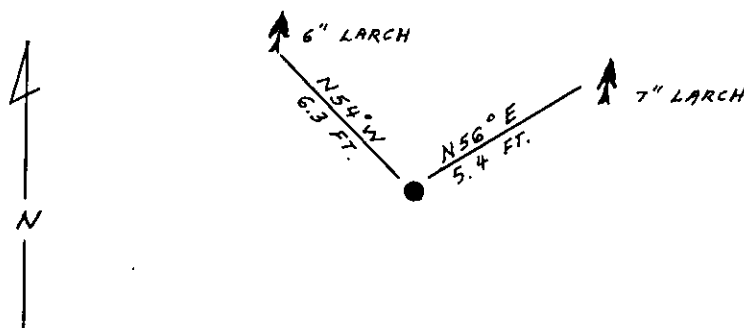
I, Alvah F. Hughes  
certify that this Corner Record correctly represents work performed by me or under my direction in compliance with the "Corner Recordation Act" (70-22-101, et seq., M.C.A.).

Alvah F. Hughes  
Signature of Surveyor

Date: 1/4/90 Reg. No. 7322 LS

Employer: U.S. FOREST SERVICE

## SKETCH OF CORNER



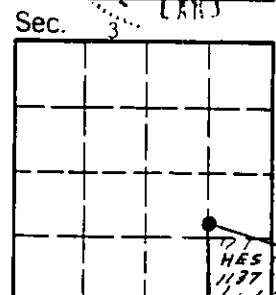
Office of Clerk and Recorder, County of Lincoln. This "corner record" was filed for record on Jan 16, 1990

was noted on the cross-index plat and is assigned page No. 4221, in

book No. \_\_\_\_\_

Janet F. Sugilby  
County Official

Cross Index No. 4 HES 1137 T. 35 N R. 33 W P.M.M.



• - corner this sheet