

INSTRUCTIONS

1. Original and/or subsequent record used to evaluate the corner position.
2. Description of evidence found, note discrepancies in the record, state method of establishing lost or obliterated corners.
3. Description of monument and accessories set to perpetuate the corner position.
4. Sketch of corner, show all pertinent data which can best be shown in a sketch example, corner marking, topography ties, position of accessories, etc.
5. Certification must be signed and sealed by Land Surveyor registered in the State of Montana.
6. Fill in Cross Index & Section Diagram at bottom of sheet.

CERTIFIED CORNER RECORDATION

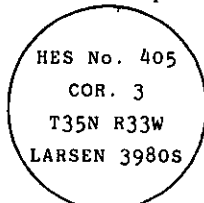
3 of HES 405
 Corner 1 of HES 1074 T. 35 N., R. 33 W., P.M.M. Lincoln County

- I. 1915, original H.E.S. 405 record by E. Johnson: "Set a sandstone, 24x10x6 ins., 14 ins. in the ground, marked 3 H.E.S. 405 on SE. face, and a cross (x) on top for the exact corner point, from which
 A cross (x) on a fir, 10 ins. dia., bears S22°05'E, 17 lks. dist.
 A cross (x) on a larch, 10 ins. dia., bears S53°40'W, 27 lks. dist.; each blazed and scribed 3 H.E.S. 405 BT.

1921 H.E.S. 1074 record by G. Higgins: "Beginning at Cor. 1 identical with Cor. No. 3 of H.E.S. No. 405 (accepted) which is a sandstone . . . marked as said and witnessed as described by the Surveyor General."

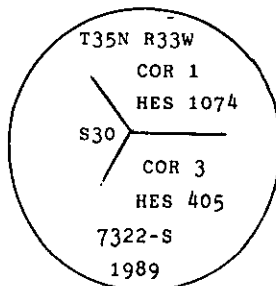
1981 Certificate of Survey No. 973 by D. Larsen, Reg. No. 3980-S: "Set a brass cap by record distances." No Certified Corner Recordations on file at the Lincoln County Courthouse.

- II. Found a 2 in. dia. iron pipe, 24 ins. long, not set, laying buried beside an underground telephone cable, alongside Yaak highway with 2 in. dia. brass cap marked:



Found two scribed trees, origin unknown. No original evidence found due to old Yaak highway construction.

- III. At a position determined by a grant boundary adjustment between Cor. 2 & Cor. 4 of HES 405, set a 5/8 in. dia. aluminum rod, 24 ins. long, 30 ins. in the ground with a 3 1/4 in. dia., U.S.D.A., Forest Service, aluminum cap. New monument buried at the edge of the Yaak highway alongside underground telephone cable; Larsen monument buried horizontally alongside. Aluminum cap marked as shown:



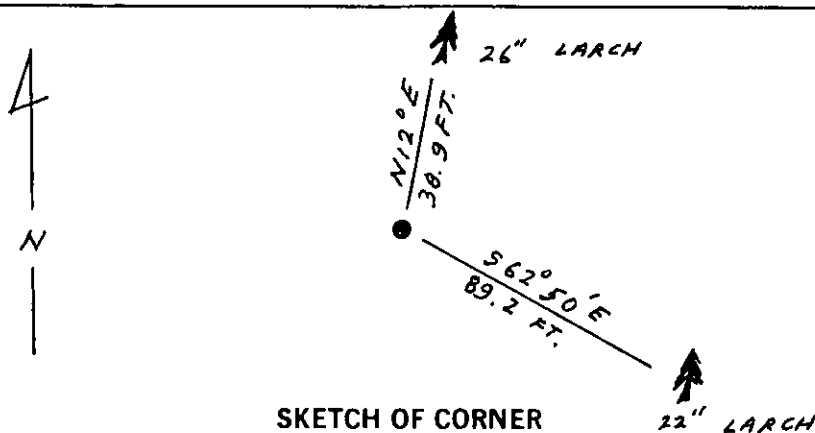
from which the found scribed trees:

A larch, 26 ins. dia., bears N12°E, 38.9 ft. dist., existing scribe 1 HES 1074 39.5 BT.

A douglas fir, 22 ins. dia., bears S62°50'E, 89.2 ft. dist., existing scribe 3 HES 405 90.8 BT.

Painted a red band around each bearing tree and attached Survey Monument and Bearing Tree signs.

Magnetic Declination: 20°30' East



SKETCH OF CORNER

CERTIFICATION

I, Gary C. Crismon
 certify the information shown herein is true and correct.

Gary C. Crismon
 Signature Ground Party Chief

I, Alvah F. Hughes
 certify that this Corner Record correctly represents work performed by me or under my direction in compliance with the Corner Recordation Act" (70-22-101, et seq., M.C.A.)

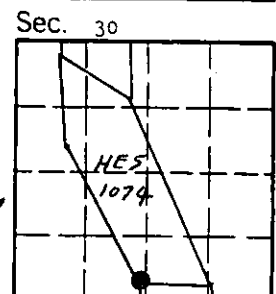
Alvah F. Hughes
 Signature of Surveyor & Seal

Date: 12/6/89 Reg. No. 7322-S

Employer: U.S. FOREST SERVICE

Office of Clerk and Recorder, County of Lincoln This "corner record" was filed for record on Dec 19, 1989 was noted on the cross-index plat and is assigned page No. 4167, in book No. _____

Cross Index No. 3HES405 T. 35 N. R. 33 W. P.M.M.



• - corner this sheet