

INSTRUCTIONS

1. Original and/or subsequent record used to evaluate the corner position.
2. Description of evidence found, note discrepancies in the record, state method of establishing lost or obliterated corners.
3. Description of monument and accessories set to perpetuate the corner position.
4. Sketch of corner, show all pertinent data which can best be shown in a sketch example, corner marking, topography ties, position of accessories, etc.
5. Certification must be signed and sealed by Land Surveyor registered in the State of Montana.
6. Fill in Cross Index & Section Diagram at bottom of sheet.

CERTIFIED CORNER RECORDATION

Corner U.S.L.M. 405 T. 35 N. R. 33 W. P.M.M. Lincoln County

- I. 1915. Original U.S.L.M. 405 record by Elmer Johnson: "I mark a quartzite outcrop 4x10x20 ft. above ground, U.S.L.M. on E. face, and a cross (x) on top for the exact monumental point, from which

A cross (x) on a black pine, 6 ins. dia., bears $N74^{\circ}38'E$, 81 lks. dist.
 A cross (x) on a larch, 6 ins. dia., bears $S26^{\circ}55'E$, 76 lks. dist.
 A cross (x) on a black pine, 6 ins. dia., bears $S26^{\circ}39'W$, 40 lks. dist. each blazed and scribed U.S.L.M. 405 BT.
 Raise a mound of stone, 6 ft. base, 4 ft. high south of corner."

- II. Found a rock outcrop, 10x20x4 ft. above ground, USLM 405 chiseled on N face (record E face) and X chiseled on top, from which

A downed pine, 13 ins. dia., bears $N74^{\circ}E$, 54.3 Ft. (82 lks.) dist., scribing visible.
 A rotten root crown, bears $S30^{\circ}E$, 51.3 ft. (78 lks.) dist.
 A lodgepole pine, 11 ins. dia., bears $S26^{\circ}W$, 27.3 ft. (41 lks.) dist., scribe X USLM 405 BT visible.

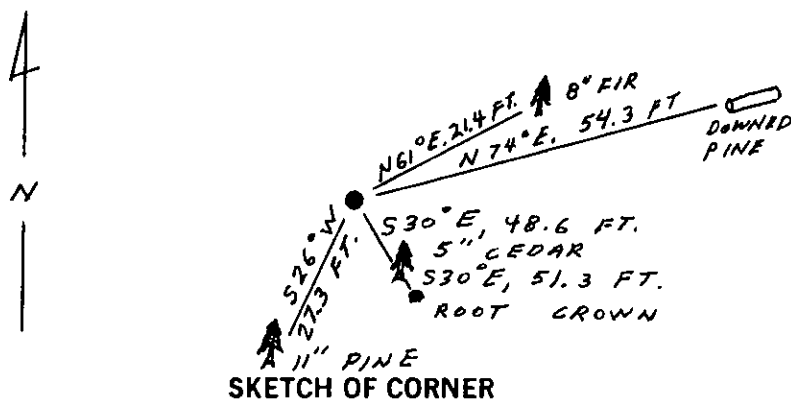
- III. Established two new bearing trees:

A douglas fir, 8 ins. dia., bears $N61^{\circ}E$, 21.4 ft. dist., scribed X and USLM 405 BT.
 A cedar, 5 ins. dia., bears $S30^{\circ}E$, 48.6 ft. dist., scribed X and USLM 405 BT.

Painted red bands around the bearing trees and attached "Land Survey Monument" and "Bearing Tree" signs where needed.

Set a 6 ft. galvanized steel guard post with "Land Survey Marker" decals, Northwest, 4.2 ft.

Magnetic Declination: $20^{\circ}30'$ East



CERTIFICATION

I, Jane L. Eby
 certify the information shown herein is true and correct.

Jane L. Eby
 Signature of Third Party Chief

I, Alvah F. Hughes
 certify that this Corner Record correctly represents the work performed by me or under my direction in compliance with the "Corner Recordation Act" (70-22-101, et seq. M.C.A.)

Alvah F. Hughes
 Signature of Surveyor & Seal

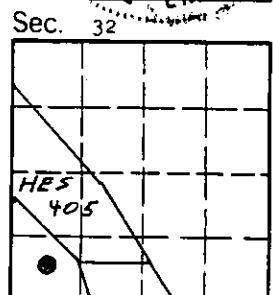
Date: 12/7/89 Reg. No. 7322

Employer: U.S. FOREST SERVICE

Office of Clerk and Recorder, County of Lincoln. This "corner record" was filed for record on Dec 19, 1989

was noted on the cross-index plat and is assigned page No. 4163, in book No. _____

Cross Index No. USLM 405 T. 35 N R. 33 W P.M.M.



• - corner this sheet