

INSTRUCTIONS

1. Original and/or subsequent record used to evaluate the corner position.
2. Description of evidence found, note discrepancies in the record, state method of establishing lost or obliterated corners.
3. Description of monument and accessories set to perpetuate the corner position.
4. Sketch of corner, show all pertinent data which can best be shown in a sketch example, corner marking, topography ties, position of accessories, etc.
5. Certification must be signed and sealed by Land Surveyor registered in the State of Montana.
6. Fill in Cross Index & Section Diagram at bottom of sheet.

CERTIFIED CORNER RECORDATION

Corner 4 of HES 405
6 of HES 1074 T. 35 N. R. 33 W. P.M.M. Lincoln County

- I. 1915, original H.E.S. 405 record by E. Johnson: "Set for Cor. No. 4, a sandstone 24x12x8 ins., 14 ins. in the ground, marked 4 H.E.S. 405 on S. face, and a cross (x) on top for the exact corner point, from which

A cross (x) on a black pine, 6 ins. dia., bears N54°17'E, 30 lks. dist.

A cross (x) on a larch, 8 ins. dia., bears S29°05'E, 71 lks. dist.; each blazed and scribed 4 H.E.S. 405 BT.

Raise a mound of earth, 4 ft. base, 2 ft. high, W. of corner."

1921, H.E.S. 1074 record by G. Higgins: "Identical with Cor. No. 4 of H.E.S. No. 405 (accepted) which is a sandstone 10x9x7 ins. above ground, marked and witnessed as described by the Surveyor General. I adopt this Cor. for Cor. No. 6 of this survey and mark it 6 H E S 1074 on NW face. From the cross (x) on top which is the exact corner point,

A cross (x) on a larch tree, 6 ins. dia., bears N7°12'E, 41 lks. dist.

A cross (x) on a cottonwood tree, 11 ins. dia., bears S30°13'W, 64 lks. dist., each blazed and scribed 6 H E S 1074 BT.

Raise a mound of stone 4 ft. base, 2 ft. high, NW. of corner."

- II. Found a set stone, 9x6 ins., 8 ins. out of ground, marked 4 HES 405 on S and 6 HES 1074 on W faces, from which

A stump with 12 in. dia. long, bears N87°E (recd: N54°17'E), 20.1 ft. (30.4 lks.) dist., scribe 4 HES 504 visible on log portion.

A saw stump, 2 ft. high by 18 ins. dia., bears S29°E, 46.8 ft. (70.9 lks.) dist., no visible scribe.

A dead larch, 12 ins. dia., bears N8°E, 25.8 ft. (39 lks.) dist., scribe overgrown.

A mound of stone, 3 ft. dia. by 18 ins. high, bears west, 3 ft. dist.

A mound of stone, 2 ft. dia. by 12 ins. high, bears south, 2.5 ft. dist.

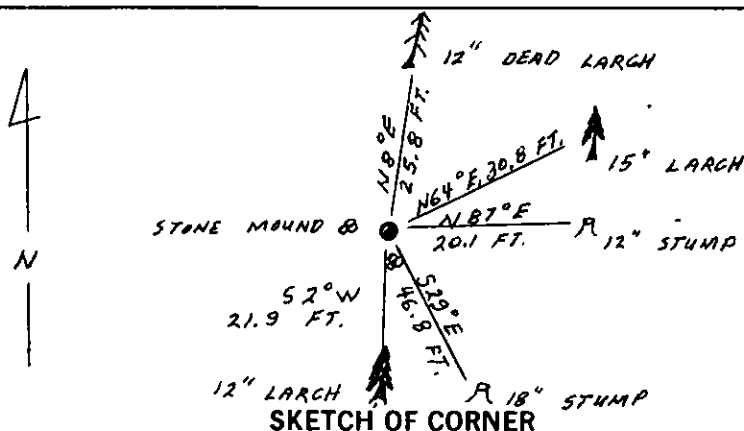
- III. Established two new bearing trees:

A larch, 12 ins. dia., bears S2°W, 21.9 ft. dist., scribed 4 HES 405 BT.

A larch, 15 ins. dia., bears N64°E, 30.8 ft. dist., scribed X BT.

Set a 6 ft. galvanized steel guard post with Land Survey Marker decal, 2 ft., northerly on property line. Painted a red band around each bearing tree and attached Survey Monument and Bearing Tree signs.

Declination: 20° E.



CERTIFICATION

I, Gary C. Crismon
 certify the information shown herein is true and correct.

Gary C. Crismon
 Signature Ground Party Chief

I, Alvah F. Hughes
 certify that this Corner Record correctly represents work performed by me or under my direction in compliance with the "Corner Recordation Act" (70-22-101, et seq. M.S.A.)

Alvah F. Hughes
 Signature of Surveyor

Date: 9/6/89 Reg. No. 7322-S

Employer: U.S. FOREST SERVICE

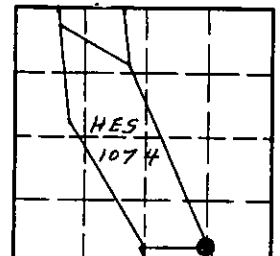
Office of Clerk and Recorder, County of Lincoln. This "corner record" was filed for record on Dec 19, 1989

was noted on the cross-index plat and is assigned page No. 4162, in book No. _____

Janet E. Sugil by Bill Sugil
 County Official

Cross Index No. 4HES405 T. 35 N R. 33 W P.M.M.

Sec. 30



• corner this sheet