

CERTIFIED CORNER RECORDATION

Corner No. 6 HES 846 T. 35 N., R. 33 W., P.M.M. Lincoln County

Record :

1917 HES survey by E.R. Johnson.

"Set a small stone, marked with a cross (x), under a sandstone 26x16x5 ins., 16 ins. in the ground, marked 6 HES 846 on SE face and a cross (x) on top for exact corner point."

No bearings available, therefore dig pits 24x24x12 ins. crosswise on this and the succeeding course 7 ft. dist. and raise a mound of earth 4 ft. base, 2 ft. high, SE of corner.

1994 Certificate of Survey No. 2158, Lincoln County Records, by Davis Surveying, Inc.

Found Evidence :

The search area for Cor. No. 6 HES 846 falls in a swampy floodplain of the Yaak River, and the monument and accessories were lost during high water periods.

Perpetuation :

Corner No. 6 HES 846 was computed using distance, distance method from tied corners from both HES 846 and HES 1137 per C. of S. No. 2158, Lincoln County Records, Montana.

Due to the area in which the computed position of Cor. No. 6 HES 846 falls, no monument was set, from which:

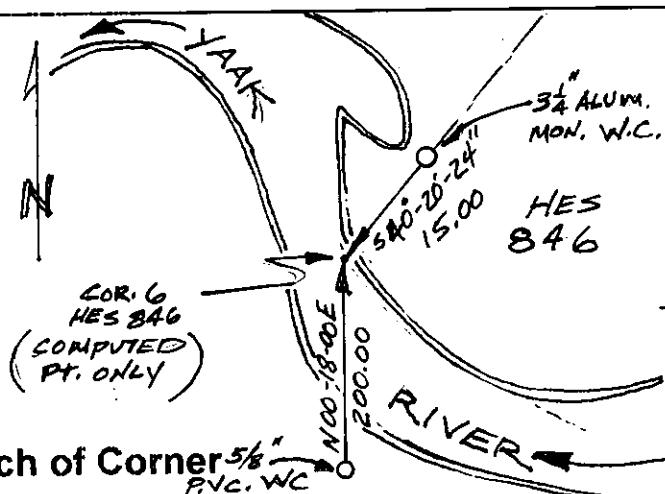
A 5/8 inch dia. alum. rod, 30 ins. long, 26 ins. in the ground with a 3 1/4 inch dia. cap marked as shown below, set as a witness corner, bears N. 40°20'24" E., 15.00 ft. dist.

A 5/8 inch dia. steel rebar, 24 ins. long, 22 ins. in the ground with a 1 1/4 inch dia. yellow PVC cap stamped KED 4975-S, bears S. 00°18'00" W., 200.00 ft. dist.

Set a steel guard post with Property Line and Survey Monument decals on line 1.00 ft. dist. northeasterly from alum. monument witness corner.



Magnetic Declination: 18° East



CERTIFICATION

I, John Damon

certify the information shown herein is true and correct.

Signature of Ground Party Chief

I, Kenneth E. Davis

certify that this Corner Record correctly represents work performed by me or under my direction in compliance with the "Corner Recordation Act" (70-22-101, et seq. (M.C.A.))

Signature of Surveyor & Seal

Date: 1-7-98 Reg. No. 4975-S

Employer: Davis Surveying, Inc.

Section

Office of Clerk and Recorder, County of Lincoln

This "corner record" was filed for record on 1-16-98

was noted on the cross-index plat and is assigned page No. 10062

in book No. _____

County Official Coral M. Cunny

Cross Index No. 6 HES 846 T. 35 N., R. 33 W., PMM

• THIS CORNER

