

CERTIFIED CORNER RECORDATION

Corner No. 1 HES 846 T. 35 N., R. 33 W., P.M.M. Lincoln County

Record :

1917 HES survey by ER Johnson.

"Set a small stone marked with a cross (x) under a quartzite stone 28x9x4 ins., 18 ins. in the ground, marked 1 HES 846 on SE face and a cross (x) on top for exact corner point, from which:

A cross (x) on a larch tree 10 ins. dia. bears N 35°15' E, 47 lks. dist.

A cross (x) on a larch tree 24 ins. dia. bears N 49°00' W, 23 lks. dist., each blazed and scribed 1 HES 846 BT.

Raise a mound of stone 4 ft. base, 2 ft. high, SE of corner.

1970 PF Plat No. 2532 Pleasant Meadow Subdivision by Sargent, Ramer & Associates Inc.

"Set brass capped monument."

1994 Certificate of Survey No. 2158 by Davis Surveying, Inc.

Found Evidence :

The original stone monument and its accessories for Corner No. 1 HES 846 were lost or destroyed during road construction on Hwy. 92 (Yaak Hwy.). A 2 1/2 inch dia. brass cap reported to mark Corner No. 1 per PF Plat No. 2532 was recovered.

Perpetuation :

Corner No. 1 HES 846 was computed using distance distance method from tied corners from HES 846 and using GLO record tie from the established USLM No. 846 found and tied per C. of S. No. 2158, Lincoln County Records, Montana.

At the computed position, set a 5/8 inch dia. alum. rod 30 ins. long, 26 ins. in the ground with a 3 1/4 inch dia. alum. cap marked as shown below, from which:

A 2 inch long PK nail driven flush with the existing hwy. pavement bears S. 84° W., 5.50 ft. dist.

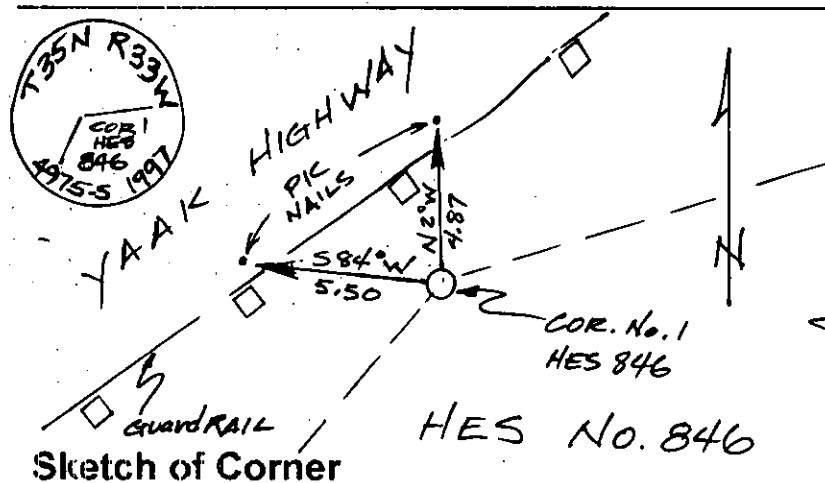
A 2 inch long PK nail driven flush with the existing hwy. pavement bears N. 2° W., 4.87 ft. dist.

The found 2 1/2 inch dia. brass cap per P.F. Plat No. 2532 bears N. 55°41'59" E., 100.81 ft. dist.

Attached Bearing Tree signs on guard rail posts and attached one Land Survey Monument sign to guard rail post.

Set a steel guard post with Property Line and Land Survey Monument decals 2 ft. dist. southwesterly on line.

Magnetic Declination: 18° East



CERTIFICATION

I, John Damon

certify the information shown herein is true and correct.

Signature of Ground Party Chief

I, Kenneth E. Davis

certify that this Corner Record correctly represents work performed by me or under my direction in compliance with the "Corner Recordation Act" (70-22-101, et seq., M.C.A.)

Signature of Surveyor & Seal

Date: 1-7-98 Reg. No. 4975-S

Employer: Davis Surveying, Inc.

Section

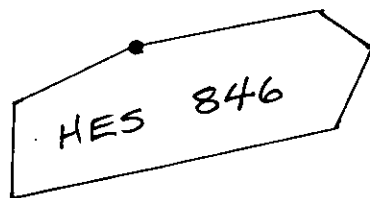
Office of Clerk and Recorder, County of Lincoln

This "corner record" was filed for record on 1-16-98

was noted on the cross-index plat and is assigned page No. 10061

in book No. 4975-S

County Official



Cross Index No. 1 HES 846 T. 35 N., R. 33 W., PMM

• THIS CORNER