

CERTIFIED CORNER RECORDATION

Corner No. 2 HES 846 T. 35 N., R. 33 W., P.M.M. Lincoln County

Record :

1908 Long Meadow Ranger Station survey by L.F. Vinal, Surveyor, Deputy Ranger.
"Set stone monument and 2 Bearing Trees."

1917 HES survey by E.R. Johnson

"Set a small stone, marked with a cross (x), under a quartzite stone 36x6x6 ins., 26 ins. in the ground, marked 2 HES 846 on S. face and a cross (x) on top for exact corner point from which:

A cross (x) on a larch tree 18 ins. dia. bears N. 12°45' E., 105 lks. dist.

A cross (x) on a larch tree 18 ins. dia. bears N. 73°00' W., 70 lks. dist., each blazed and scribed 2 HES 846 BT.

Raise a mound of earth 4 ft. base, 2 ft. high, S. of corner."

1970 PF Plat No. 2532, Pleasant Meadow Subdivision by Sargent, Ramer & Associates Inc. "Set brass capped monument."

1994 Certificate of Survey No. 2158 by Davis Surveying, Inc.

Found Evidence :

During a field search of the area, a quartzite stone, shattered into 2 pieces, was found approximately 30x6x6 ins. in size, with 2 HES 846 scribed on rock face. It appears during road construction that this monument had been disturbed. No accessories for this corner were recovered. A 2 1/2 inch dia. brass cap per P.F. Plat No. 2532 reported to mark Corner No. 2 HES 846 was also found.

Perpetuation :

Corner No. 2 HES 846 position was computed using found evidence and distance distance method using tied corners and accessories from HES 846 and Long Meadows Ranger Station survey. At the computed position, set a 2 1/2 inch dia. alum. pipe 30 ins. long, 24 ins. in the ground, with a 3 1/4 inch dia. alum. cap marked as shown below, buried original stone along side, from which:

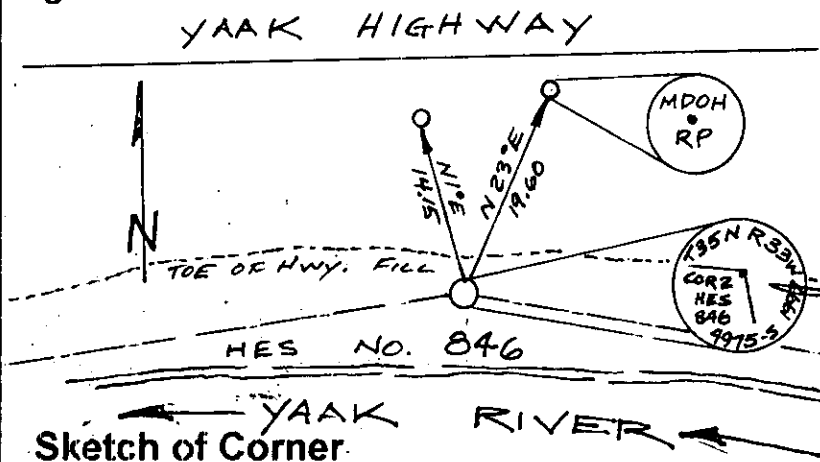
A 5/8 inch dia. steel rebar with a 1 1/4 inch dia. red PVC cap stamped "MDOH RP" bears N. 1° E., 14.15 ft. dist.

A 5/8 inch dia. steel rebar with a 1 1/4 inch dia. red PVC cap stamped "MDOH RP" bears N. 23° E., 19.60 ft. dist.

The found 2 1/2 inch dia. brass cap per P.F. Plat No. 2532 bears N. 18°33'25" E., 9.25 ft. dist.

Set a steel guard post with attached Property Line and Land Survey Monument decals south-westerly on line 1.50 ft. dist.

Magnetic Declination: 18° East



CERTIFICATION

I, John Damon

certify the information shown herein is true and correct.

Signature of Ground Party Chief

I, Kenneth E. Davis

certify that this Corner Record correctly represents work performed by me or under my direction in compliance with the "Corner Recordation Act" (70-22-101, et seq. M.C.A.)

Signature of Surveyor & Seal

Date: 1-7-98 Reg. No. 4975-S

Employer: Davis Surveying, Inc.

Section

Office of Clerk and Recorder, County of Lincoln

This "corner record" was filed for record on 1-16-98

was noted on the cross-index plat and is assigned page No. 10060

in book No.

County Official

HES No. 846

Cross Index No. 2 HES 846 T. 35 N., R. 33 W., PMM

• THIS CORNER