

CERTIFIED CORNER RECORDATION

Corner No. 1 HES 1137 T. 35 N., R. 33 W., P.M.M. Lincoln County

Record :

1922 HES survey by J.F. Pfau.

"Place a small stone marked with a cross (x) under a quartzite stone 26x10x10 ins., 16 ins. in the ground, marked 1 HES 1137 on S.W. face, and a cross (x) on top for the exact cor. point, from which:

A cross (x) on a balsam fir tree 8 ins. dia. bears S. 68°30' E., 74 lks. dist.

A cross (x) on a douglas fir tree 24 ins. dia. bears N. 7°10' W., 100 lks. dist., each blazed and scribed 1 HES 1137.

Raise a mound of stone 4 ft. base, 2 ft. high S.W. of corner.

1974 Certificate of Survey No. 43 by WETMORE & RICE (MELVIN LAUTEREN 4232-LS)
"Set 1/2 in. diam. iron pipe"

1994 Certificate of Survey No. 2158 by Davis Surveying, Inc.

Found Evidence :

Due to the recent road construction of Hwy. No. 92 (Yaak Highway), Corner No. 1 HES 1137 and its accessories were destroyed, and no evidence of other survey monuments found during field search of area.

Perpetuation :

Corner No. 1 HES 1137 was computed using distance, distance method from tied corners from both HES 1137 and HES 846 per C. of S. No. 2158, Lincoln County Records, Montana.

At the computed position, set a 5/8 inch diam. alum. rod 30 ins. long, 26 ins. in the ground, with a 3 1/4 in. diam. alum. cap marked as shown below, from which:

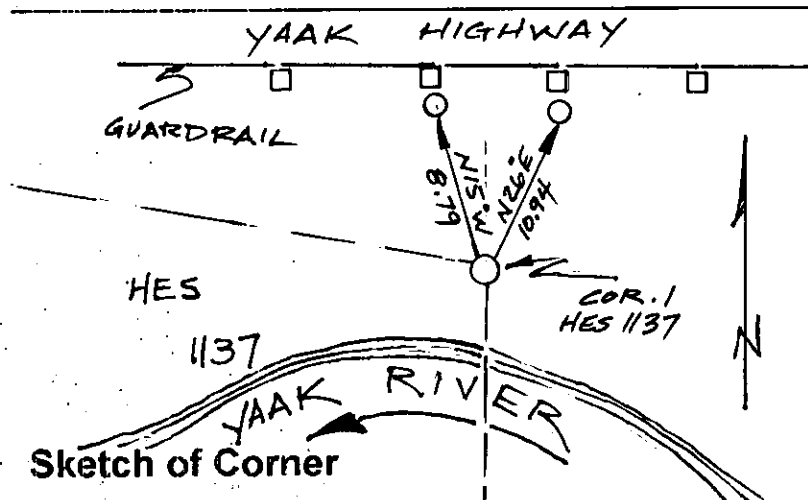
A 1/2 inch diam. steel rebar, 24 ins. long, 22 ins. in the ground, with a yellow PVC cap stamped "Davis Control" bears N. 15° W., 8.79 ft. dist.

A 1/2 inch diam. steel rebar, 24 ins. long, 22 ins. in the ground, with a yellow PVC cap stamped "Davis Control" bears N. 26° E., 10.94 ft. dist.

Attached Bearing Tree signs on guardrail posts next to the above referenced rebars and Land Survey Monument sign to one of the above posts.

Set a steel guard post with Property Line and Survey Monument decals on line 3 ft. dist. northwesterly of monument.

Magnetic Declination: 18° East



CERTIFICATION

I, John Damon

certify the information shown herein is true and correct

John Damon
Signature of Ground Party Chief

I, Ken E. Davis

certify that this Corner Record correctly represents work performed by me or under my direction in compliance with the Corner Recordation Act (79-22-101 et seq., M.C.A.)

Ken E. Davis 4975-S
Signature of Surveyor & Seal

Date: 1-7-98 Reg. No. 4975-S

Employer: Davis Surveying, Inc.

Section

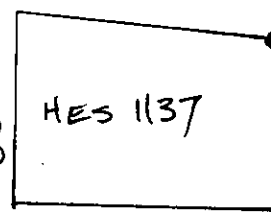
Office of Clerk and Recorder, County of Lincoln

This "corner record" was filed for record on 1-16-98

was noted on the cross-index plat and is assigned page No. 10059

in book No. _____

Coral M. Cunningham
County Official



Cross Index No. 1 HES 1137 T. 35 N., R. 33 W., PMM

• THIS CORNER