

CERTIFIED CORNER RECORDATION

Corner No. 6 HES 408 T. 35 N., R. 32 W., P.M.M. Lincoln County

Record :

1915 HES No. 408 by F.B. Thieme

"Set a small stone marked with a cross (x) under a quartzite stone 24x9x5 ins., 14 ins. in the ground, marked 6 H.E.S. 408 on NW face, and a cross (x) on top for the exact corner point, from which:

A cross (x) on a Lodgepole Pine tree 12 ins. dia. bears S 4°30' W, 32 lks. dist.

A cross (x) on a Larch tree 10 ins. dia. bears N 54°30' W, 23 lks. dist., each blazed and scribed 6 H.E.S. 408 BT.

Raised a mound of stone, 4 ft. base, 2 ft. high, NW of corner."

Found Evidence :

A quartzite stone, 9x9 ins., 7 ins. exposed above ground, marked 6 H.E.S. 408 on the NW face, with a cross (x) on top, from which:

A 14 inch dia. Lodgepole Pine snag, fallen over with visible scribing, bears SW from stone monument. No distance was measured due to being able to determine exact original position.

A mound of stone, 4 ft. base, 2 ft. high, bears NW of stone monument.

Perpetuation :

I accept the marked stone for Corner No. 6 HES 408.

We established two (2) new Bearing Trees described as follows:

A Spruce 10 1/2 ins. dia. bears N 77° W, 21.00 ft. dist., scribed "6 HES 408 BT".

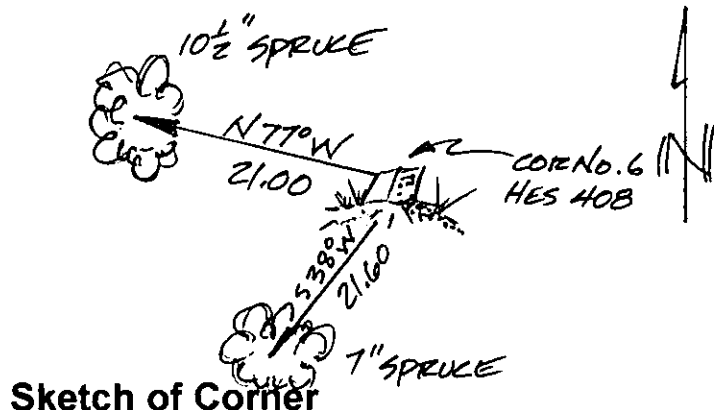
A Spruce 7 ins. dia. bears S 38° W, 21.60 ft. dist., scribed "6 HES 408 BT".

Painted scribed faces red and 6 inch wide red bands around both trees.

Attached Land Survey Monument and Bearing Tree signs to both trees.

Set a steel post 2 ft. NE of corner with attached monument and property line stickers.

Magnetic Declination: 19° East



CERTIFICATION

I, John Damon

certify the information shown herein is true and correct

John Damon

Signature of Ground Party Chief

I, Ken E. Davis

certify that this Corner Record correctly represents work performed by me or under my direction in compliance with the "Corner Recoration Act"

(70-22-101 et seq., M.C.A.)

4975-S

Signature of Surveyor & Seal

Date: 10/13/97 Reg. No. KED 4975-S

Employer:

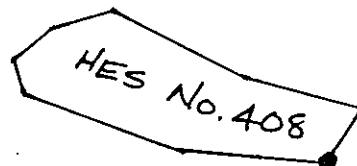
Sketch of Corner

Section

Office of Clerk and Recorder, County of Lincoln

This "corner record" was filed for record on Oct 14, 1997
was noted on the cross-index plat and is assigned page No. 9980
in book No. Local M. Cumming By, DUB

County Official



Cross Index No. Cor. 6 HES 408 T. 35 N., R. 32 W., PMM • THIS CORNER