

CERTIFIED CORNER RECORDATION

Corner No. 2 HES 408 T. 35 N., R. 32 W., P.M.M. Lincoln County

Record :

1915 HES No. 408 by F.B. Thieme

"Set for Cor. No. 2, a small stone marked with a cross (x) under a quartzite stone 24x8x5 ins., 14 ins. in the ground, marked 2 HES 408 on S. face, and a cross (x) on top for the exact corner point, from which:

A cross (x) on a Spruce tree, 12 ins. dia., bears N 21°01' W, 6 lks. dist.
A cross (x) on a Spruce tree, 11 ins. dia., bears N 72°26' E, 9 lks. dist.,
each blazed and scribed 2 HES 408 BT.

Raise a mound of stone, 4 ft. base, 2 ft. high, south of corner."

Found Evidence :

During a field search of area, it was found that during the 1997 high water season on the Yaak River, the river has undercut the existing river bank around Corner No. 2 to the point that the original stone and its accessories have fallen into the river.

Perpetuation :

We determined the position of Corner No. 2 using the Grant Boundry Methd. Due to the washing of the area of its position, we set witness corners on line described as follows:

Set a 30 inch long, 5/8 inch alum. rod 26 ins. in the ground with a 3 1/4 inch dia. alum. cap marked as shown below, from which:

A Alpine Fir, 7 1/4 ins. dia., bears N 86° W, 12.60 ft. dist., scribed "WC 2 HES 408 BT."
A Spruce, 6 ins. dia., bears S 37° W, 53.30 ft. dist., scribed "WC 2 HES 408 BT."

Painted scribed faces red and 6 inch wide bands around all Bearing Trees.

Attached Land Survey Monument and Bearing Tree signs to trees.

Set a steel post on line 3 ft. SW of corner with attached monument and property line stickers.

This witness corner to Corner No. 2 HES 408 was positioned 25.00 ft. from the computed position of Corner No. 2 on line with Corner No. 1 HES 408.

Set a 30 inch long, 5/8 inch dia. alum. rod 26 ins. in the ground with a 3 1/4 inch dia. alum. cap marked as shown below, from which:

A Spruce, 7 1/2 ins. dia., bears S 42° W, 8.50 ft. dist., scribed "WC 2 HES 408 BT".
A Cedar, 21 ins. dia., bears S 61°30' E, 45.10 ft. dist., scribed "WC 2 HES 408 BT".

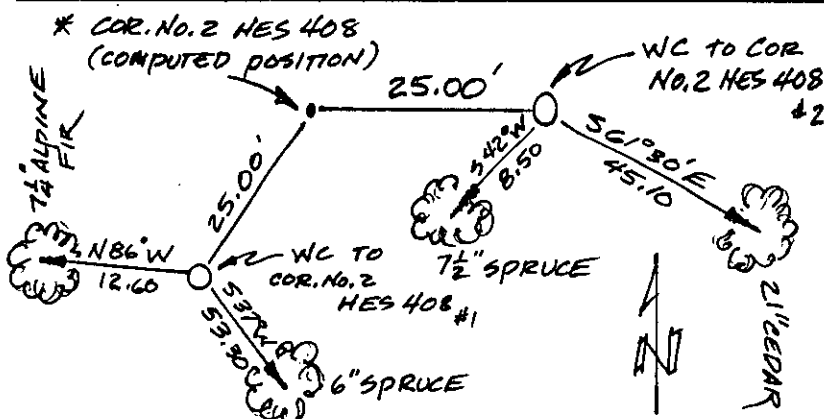
Painted scribed faces red and 6 inch wide bands around both trees.

Attached Land Survey Monument and Bearing Tree signs to both trees.

Set a steel post on line 2 ft. SE of corner with attached monument and property line stickers.

This witness corner to Corner No. 2 HES 408 was positioned 25.00 ft. from the computed position of Corner No. 2 on line with Corner No. 3 HES 408.

Magnetic Declination: 19° East



CERTIFICATION

I, John Damon

certify the information shown herein is true and correct

Signature of Ground Party Chief

I, Ken E. Davis

certify that this Corner Record correctly represents work performed by me or under my direction in compliance with the "Corner Recoration Act"

Ken E. Davis
78-22-101, et seq., M.C.A.
49-5 S

Signature of Surveyor & Seal

Date: 10/13/97 Reg. No. 4975-S

Employer: _____

Sketch of Corner *SEE BACK OF THIS FORM FOR GRANT BOUNDARY DATA.

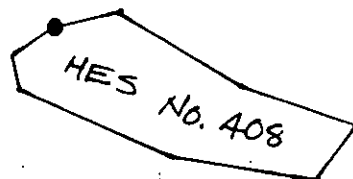
Section

Office of Clerk and Recorder, County of Lincoln

This "corner record" was filed for record on Oct 14, 1997
was noted on the cross-index plat and is assigned page No. 9976

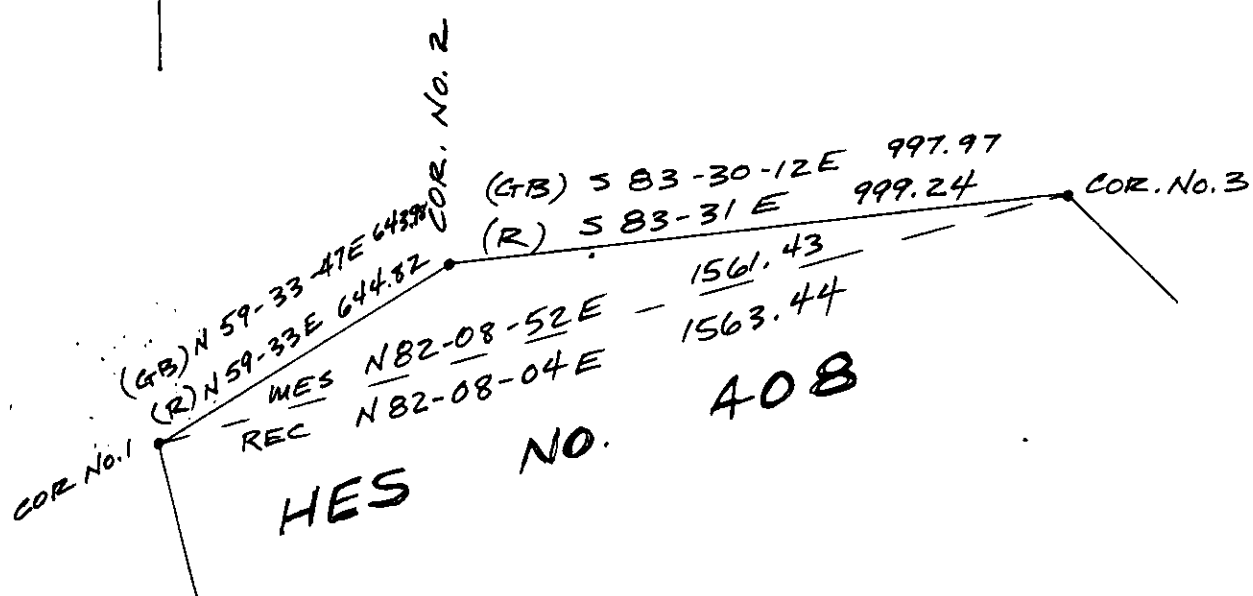
in book No. _____

County Official



Cross Index No. 2 HES 408 T. 35 N., R. 32 W., PMM

• THIS CORNER



NO SCALE