

CERTIFIED LAND CORNER RECORDATION

SECTION 11 TWP. 35 N., R. 32 W., P.M.M. H.E.S. NO. 452

DESCRIPTION OF CORNER EVIDENCE FOUND, AND ORIGINAL RECORD (IF KNOWN)

This survey was for the purpose of retracing or recovering corners of H.E.S. No. 452

Corners found shown on diagram on REVERSE SIDE

DESCRIPTION OF MONUMENT AND ACCESSORIES ESTABLISHED TO PERPETUATE THE ORIGINAL LOCATION OF THIS CORNER:

Final ——— Date of work: 9/80

Corners No.s 3 and 5 shown on diagram on REVERSE SIDE are 3/4"x24" steel rods with yellow caps marked 4661 S. Set as Witness corner to Cor. #4 of H.E.S. #452

SKETCH, WITH COURSE AND DISTANCE TO ADJACENT CORNERS IF DETERMINED IN THIS SURVEY. (MAY SKETCH OR PASTE REPRODUCTION ON REVERSE SIDE.)

SEE DIAGRAM ON REVERSE SIDE

Surveyor's Seal

I, JEFF PAULIN
certify that the information shown herein is true and correct.

Jeff Paulin
Signature of Ground Party Chief

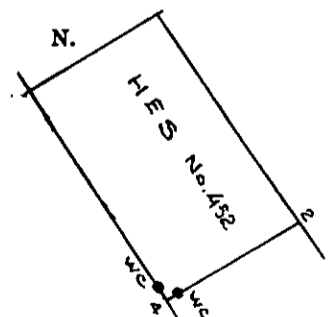
J. H. Ninneman
I, _____
certify that I have carefully performed or reviewed the work done on the diagrammed corner as reported on this recordation form and approve the same.

J. H. Ninneman
Signature of Surveyor

4661 S.

Registration Number

DIAGRAM OF CORNER:



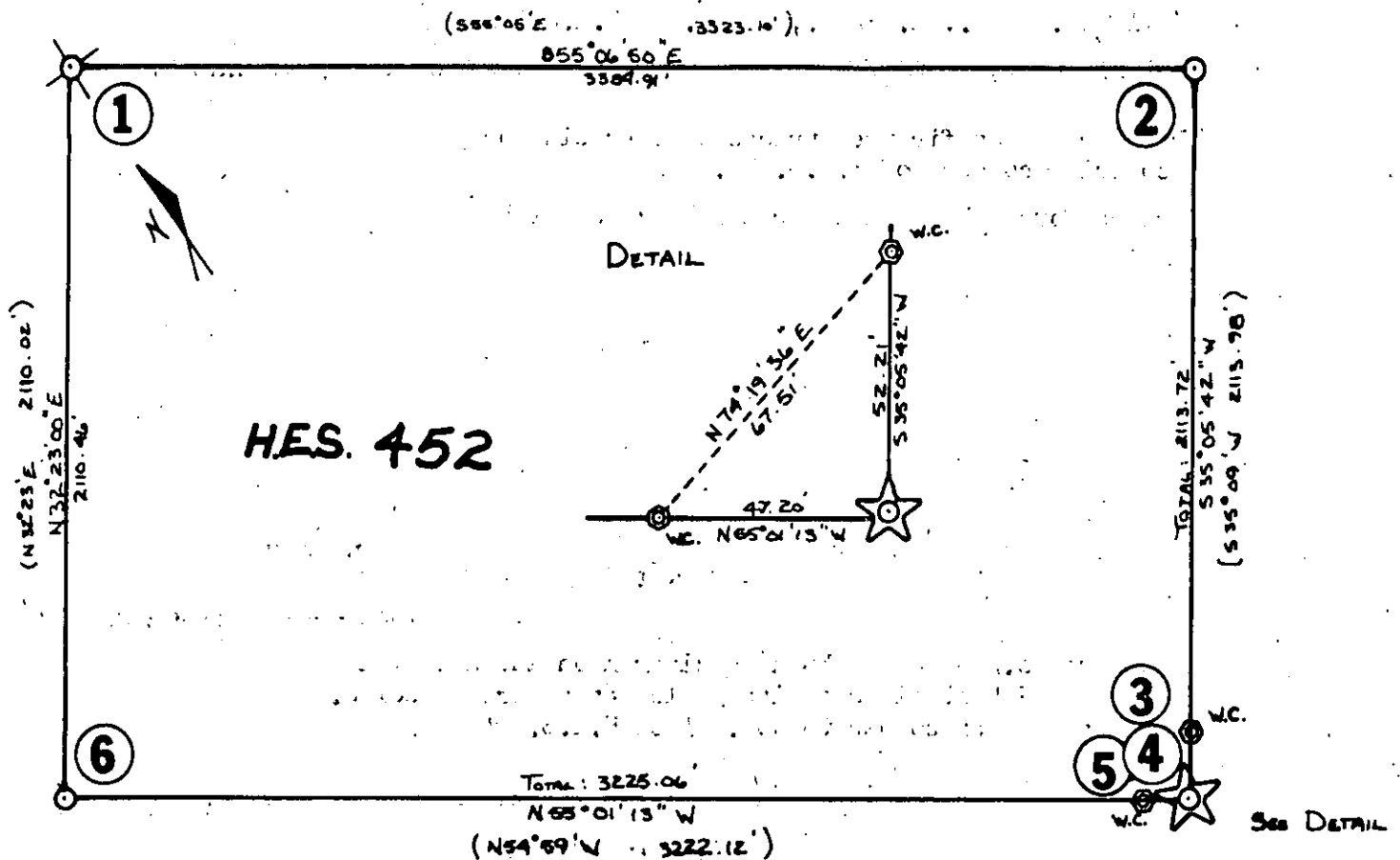
• = Corner recorded on the sheet
See Reverse side

Office of Clerk and Recorder, County of Lincoln

This "corner record" was filed for record on the 14th day of December, 1980, was noted on the cross-index plat and is

assigned page No. 939, in book No. 1

Sec. 11 Twp. 35 N., R. 32 W., P.M.M.



- 1) Corner No. 4 of H.E.S. 452 found Original Stone, 4 B.T.s
- 2) Corner No. 1 of H.E.S. 452 found Original Stone, Mound & Larch B.T. Stump Posted.
U.S.L.M. No. 280 reported to bear $N38^{\circ}10'10''E$ 133.95 chs. or 8840.20 feet from Cor. No. 1 of H.E.S. 452
- 3) Set $3/4" \times 24"$ Rebar capped J.H.N. 4661 S., Witness Corner.
- 4) Corner No. 2 of H.E.S. 452 Corner fall in Lang Creek, Found Cedar B.T. 7 Spruce B.T. Stump See Detail
16" Cedar bears $S46^{\circ}20'E$ 11 Lks.
16" Spruce stump bears $N42^{\circ}33'E$ 19 Lks. Scribed 2 HES 452 BT
- 5) Set $3/4" \times 24"$ Rebar capped J.H.N. 4661 S., Witness Corner.
- 6) Corner No. 3 of H.E.S. 452 found Original Stone, 2 B.T.s.

