

## INSTRUCTIONS

1. Original and/or subsequent record used to evaluate the corner position.
2. Description of evidence found, note discrepancies in the record, state method of establishing lost or obliterated corners.
3. Description of monument and accessories set to perpetuate the corner position.
4. Sketch of corner, show all pertinent data which can best be shown in a sketch example, corner marking, topography ties, position of accessories, etc.
5. Certification must be signed and sealed by Land Surveyor registered in the State of Montana.
6. Fill in Cross Index & Section Diagram at bottom of sheet.

## CERTIFIED CORNER RECORDATION

1 of HES 342

4 of HES 347

35 N.,

32 W.,

Lincoln

Corner \_\_\_\_\_ T. \_\_\_\_\_ R. \_\_\_\_\_ P.M.M. \_\_\_\_\_ County

I. 1915 HES 342 record by Fred E. Thieme: "Set for Cor. No. 1, a shale stone 26x10x7 ins.

1915 HES 347 record by Fred E. Thieme: "To Cor. No. 4, identical with Cor. No. 1 of unapproved HES 342 a shale stone 10x10x7 ins. above ground.

1923 HES 1194 record by J. P. Pfau: "Identical with Cor. No. 4 of accepted HES 347, and Cor. No. 1 of accepted HES No. 342; as this stone is in poor and unstable condition I remove it and in its place reset the cor. and establish Cor. No. 2 of this survey as follows: Place a small stone marked with a cross(x) under a limestone 24x24x4 ins. 14 ins. in the ground, marked 4 HES 347 on NE face, 1 HES 342 on SE face and 2 HES 1194 on W face. No bearings available, therefore dig pits 24x24x12 ins. on this and succeeding course, 7 ft. dist. and raise a mound of earth 4 ft. base, 2 ft. high W of cor.

II. Pound a stone, 17x4, 7 ins. out of the ground, mkd. 1 HES 342 on SE face, 4 HES 347 on NE face and 2 HES 1194 on SW face. From which

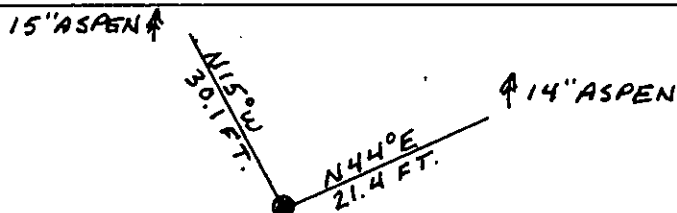
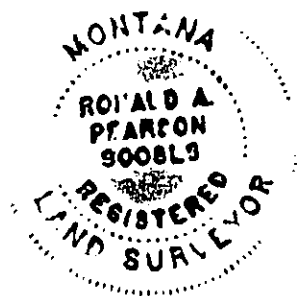
An aspen, 14 ins. diam., bears N44°E, 21.4 ft. dist., mkd. 1 HES 342 BT.(No record)

An aspen, 15 ins. diam., bears N15°W, 30.1 ft. dist., mkd. 1 HES 347 BT.(No record)

Above bearing trees were established by JHN in 1977.(According to found BT signs)

III. Painted red bands around the bearing trees and attached "Land Survey Monument" and "Bearing Tree" signs.

Set a galvanized steel guard post with "Land Survey Marker" and "Property Boundary" decals, N23°W, 3 ft. Magnetic declination: 20° East



SKETCH OF CORNER

## CERTIFICATION

I, Kevin A. Todd  
certify the information shown herein is true and correct.

*Kevin A. Todd*  
Signature Ground Party Chief

I, Ronald A. Pearson  
certify that this Corner Record correctly represents work performed by me or under my direction in compliance with the "Corner Recordation Act" (70-22-101, et seq., M.C.A.)

*Ronald A. Pearson*  
Signature of Surveyor & Seal

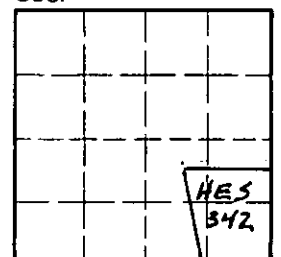
Date: 12/23/91 Reg. No. 9008 LS

Employer: U.S. FOREST SERVICE

Office of Clerk and Recorder, County of Lincoln. This "corner record" was filed for record on Jan 16, 1992 was noted on the cross-index plat and is assigned page No. 4618, in book No. \_\_\_\_\_

Cross Index No. \_\_\_\_\_ T. \_\_\_\_\_ R. \_\_\_\_\_ PMM

Sec. 24



• - corner this sheet