

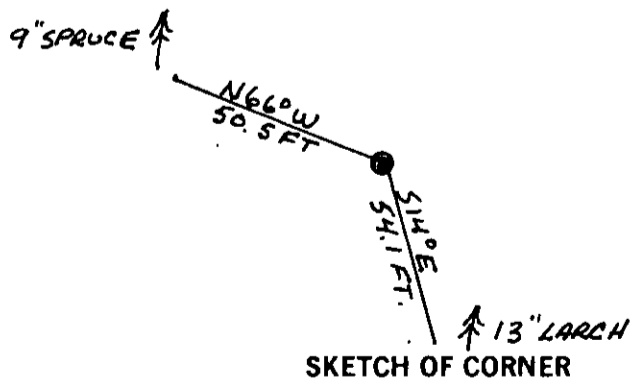
## INSTRUCTIONS

1. Original and/or subsequent record used to evaluate the corner position.
2. Description of evidence found, note discrepancies in the record, state method of establishing lost or obliterated corners.
3. Description of monument and accessories set to perpetuate the corner position.
4. Sketch of corner, show all pertinent data which can best be shown in a sketch example, corner marking, topography ties, position of accessories, etc.
5. Certification must be signed and sealed by Land Surveyor registered in the State of Montana.
6. Fill in Cross Index & Section Diagram at bottom of sheet.

## CERTIFIED CORNER RECORDATION

Corner 4 of HES 345 T. 35 N. R. 32 W. P.M.M. Lincoln County

- I. 1915 HES 345 record by Fred E. Thieme: "Set for Cor. No. 4, a small stone marked with a cross(x) under a shale stone 25x8x5 ins. 15 ins. in the ground, marked 4 HES 345 on NE face, and a cross(x) on top for the exact corner point. No bearings available, therefore dig pits 24x24x12 ins. crosswise on this and the succeeding course 7 ft. dist., and raise a mound of stone 4 ft. base, 2 ft. high, NE of corner.
- II. Found a 9x4 ins. stone, 12 ins. out of the ground, mkd. 4 HES 345 on NE face. Pits 2 ft. diam., 6 ins. deep bear N9° E and East, 7 ft. dist. Mound of stone 3 ft. base, 1 ft. high NE of corner.
- III. Established two new bearing trees:
- A larch, 13 ins. diam., bears S14° E, 54.1 ft. dist., mkd. 4 HES 345 BT.
- A spruce, 9 ins. diam., bears N66° W, 50.5 ft. dist., mkd. 4 HES 345 BT.
- Painted red bands around the bearing trees and attached "Land Survey Monument" and "Bearing Tree" signs.
- Set a galvanized steel guard post with "Land Survey Marker" and "Property Boundary" decals, N9° E, 3 ft.
- Magnetic declination: 20° East



SKETCH OF CORNER

CERTIFICATION

I, Kevin A. Todd  
certify the information shown herein is true and correct.

Kevin A. Todd  
Signature Ground Party Chief

I, Ronald A. Pearson  
certify that this Corner Record correctly represents work performed by me or under my direction in compliance with the "Corner Recordation Act" (70-22-101, et seq., M.C.A.)

Ronald A. Pearson  
Signature of Surveyor & Seal

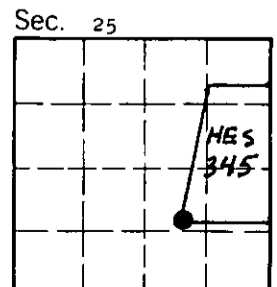
Date: 1/2/92 Reg. No. 9008 LS

Employer: U.S. FOREST SERVICE

Office of Clerk and Recorder, County of Lincoln. This "corner record" was filed for record on Jan 16, 1992 was noted on the cross-index plat and is assigned page No. 4615, in book No. \_\_\_\_\_

Carol M. Cummings  
by Ronald A. Pearson Original

Cross Index No. 4 HES 345 T. 35 N R. 32 W PMM



Sec. 25 • - corner this sheet